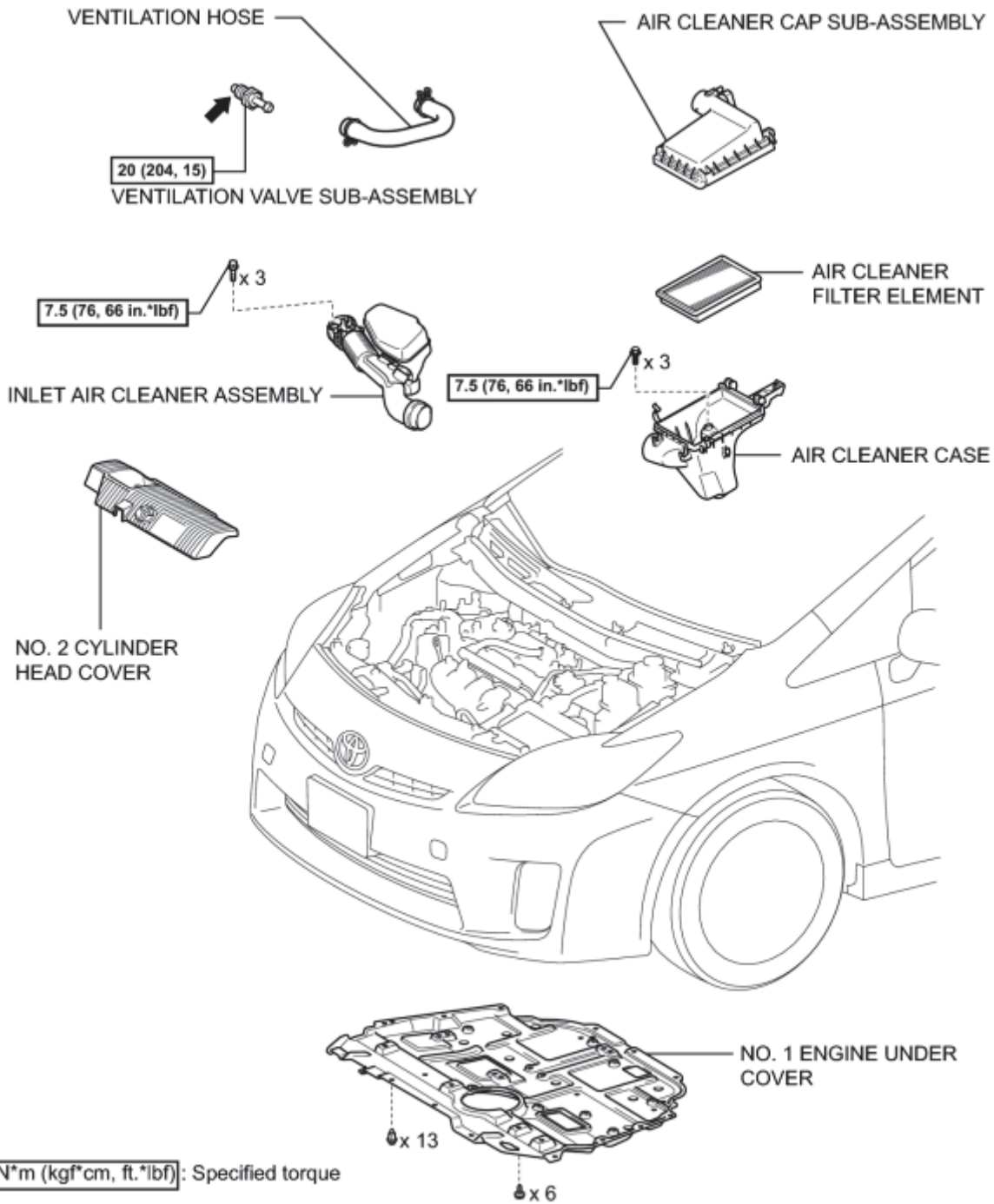


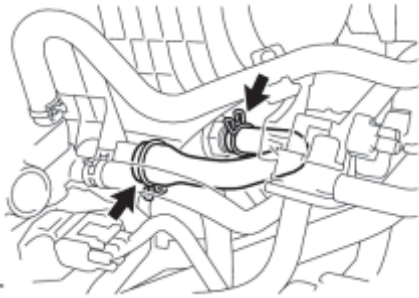
COMPONENTS

ILLUSTRATION

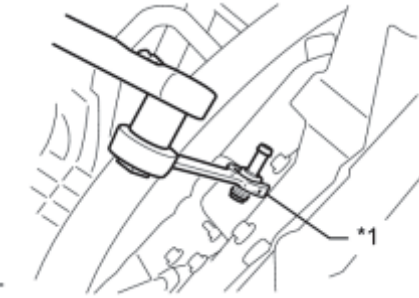


REMOVAL

1. REMOVE NO. 2 CYLINDER HEAD COVER_ INFO
2. REMOVE AIR CLEANER CAP SUB-ASSEMBLY_ INFO
3. REMOVE INLET AIR CLEANER ASSEMBLY_ INFO
4. REMOVE AIR CLEANER CASE_ INFO
5. REMOVE NO. 1 ENGINE UNDER COVER
6. REMOVE VENTILATION VALVE SUB-ASSEMBLY



(a) Remove the ventilation hose from the ventilation valve sub-assembly.



(b) Using a ball joint lock nut wrench (22 mm), remove the ventilation valve sub-assembly.

Text in Illustration

*1	Ball Joint Lock Nut Wrench (22 mm)
----	------------------------------------

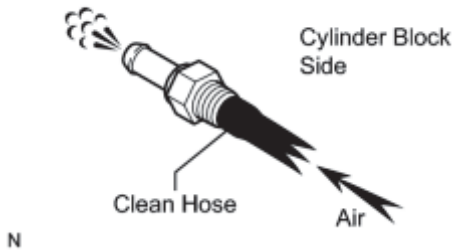
INSPECTION

1. INSPECT VENTILATION VALVE SUB-ASSEMBLY

(a) Install a clean hose to the ventilation valve sub-assembly.

(b) Check the ventilation valve sub-assembly operation.

(1) Blow air into the cylinder block side, and check that air passes through easily.



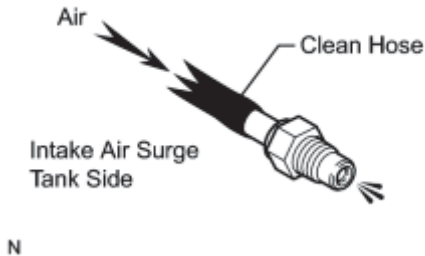
CAUTION:

Do not suck air through the valve.

Petroleum substances inside the valve are hazardous to your health.

If the result is not as specified, replace the ventilation valve sub-assembly.

(2) Blow air into the intake air surge tank side, and check that air passes through with difficulty.



CAUTION:

Do not suck air through the valve.

Petroleum substances inside the valve are hazardous to your health.

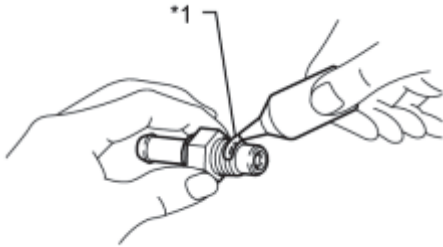
If the result is not as specified, replace the ventilation valve sub-assembly.

(c) Remove the clean hose from the ventilation valve sub-assembly.

INSTALLATION

1. INSTALL VENTILATION VALVE SUB-ASSEMBLY

(a) Apply adhesive to 2 or 3 threads of the ventilation valve sub-assembly.



N

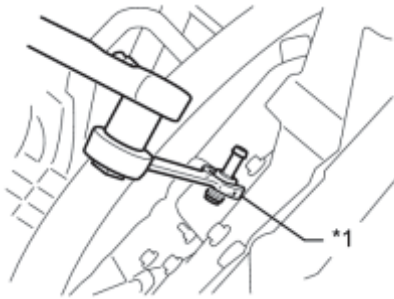
Text in Illustration

*1	Adhesive 1324
----	---------------

Adhesive:

Toyota genuine adhesive 1324, three bond 1324 or equivalent

(b) Using a ball joint lock nut wrench (22 mm), install the ventilation valve sub-assembly.



T

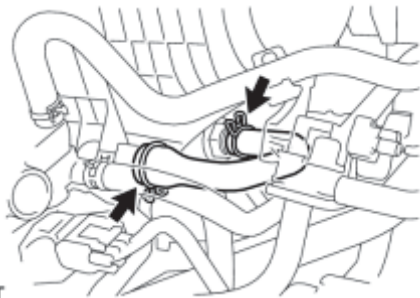
Text in Illustration

*1	Ball Joint Lock Nut Wrench (22 mm)
----	------------------------------------

Torque: **20 N·m (204 kgf·cm, 15ft·lbf)**

NOTICE:

Use the formula to calculate special torque values for situations where a ball joint lock nut wrench is combined with a torque wrench [INFO](#).



T

(c) Install the ventilation hose to the ventilation valve sub-assembly.

2. INSTALL NO. 1 ENGINE UNDER COVER

3. INSTALL AIR CLEANER CASE [INFO](#)

4. INSTALL INLET AIR CLEANER ASSEMBLY [INFO](#)

5. INSTALL AIR CLEANER CAP SUB-ASSEMBLY [INFO](#)

6. INSTALL NO. 2 CYLINDER HEAD COVER [INFO](#)