

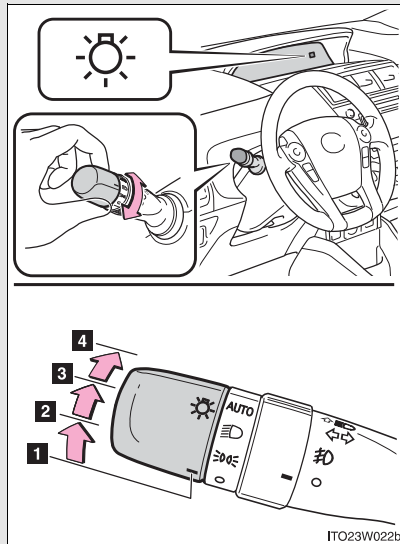
## 2-3. Operating the lights and windshield wipers

### Headlight switch

The headlights can be operated manually or automatically.

Turning the end of the lever turns on the lights as follows:

U.S.A. (type A)

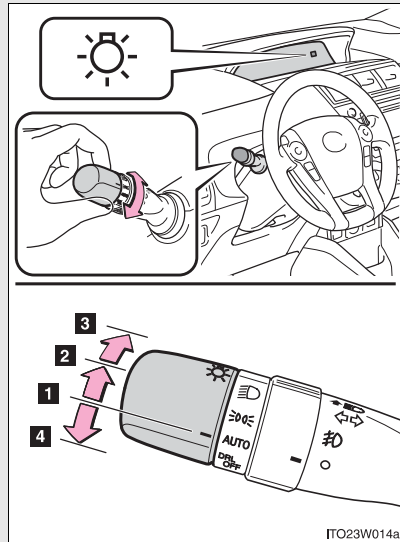




- 1**  The daytime running lights turn on.
- 2**  The side marker, parking, tail, license plate, daytime running lights and instrument panel lights turn on.
- 3**  The headlights and all the lights listed above (except daytime running lights) turn on.
- 4** **AUTO** (if equipped) The headlights, parking lights, daytime running lights and so on turn on and off automatically (when the "POWER" switch is in ON mode).

2

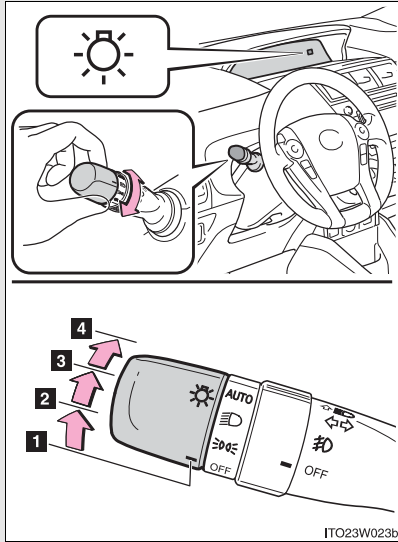
When driving

**U.S.A. (type B)**



- 1** **AUTO** (if equipped) The headlights, parking lights, daytime running lights and so on turn on and off automatically (when the “POWER” switch is in ON mode).
- 2**  The side marker, parking, tail, license plate, daytime running lights and instrument panel lights turn on.
- 3**  The headlights and all the lights listed above (except daytime running lights) turn on.
- 4** **DRL OFF** The daytime running lights turn off.

U.S.A. (type C)



- 1 OFF** The daytime running lights turn on.
- 2** The side marker, parking, tail, license plate, daytime running lights and instrument panel lights turn on.
- 3** The headlights and all the lights listed above (except daytime running lights) turn on.
- 4 AUTO** (if equipped) The headlights, parking lights, daytime running lights and so on turn on and off automatically (when the "POWER" switch is in ON mode).

2

When driving