

Rear Brake Squeak

Service Category Brake

Section Brake (rear)

Market USA

Toyota Supports
 ASE Certification 

Applicability

YEAR(S)	MODEL(S)	ADDITIONAL INFORMATION
2010	Prius	WMI(s): JTD

Introduction

Some 2010 Prius vehicles may experience rear brake squeak when backing up or moving forward during the first few brake applications when the brakes are cold. An updated rear brake shim kit is available to reduce the likelihood of this condition occurring.

Production Change Information

MODEL	PLANT	PRODUCTION CHANGE EFFECTIVE VIN
Prius	Tsutsumi No.1 Line	JTDKN3DU#A0086169
	Tsutsumi No.2 Line	JTDKN3DU#A1115205
	Toyota Auto Body	JTDKN3DU#A5090145

Parts Information

PREVIOUS PART NUMBER	CURRENT PART NUMBER	PART NAME	QTY
04946-12090	04946-47070	Shim Kit, Anti Squeal, RR	1

Required Tools & Equipment

SPECIAL SERVICE TOOLS (SST'S)	PART NUMBER	QTY
Variable Pin Wrench Set	09960-10010	1

* Essential SST.

NOTE

Additional SSTs may be ordered by calling 1-800-933-8335.

REQUIRED EQUIPMENT	SUPPLIER	PART NUMBER	QTY
ChassisEAR™ (or equivalent)	ADE	JSPSM06606 (JS Products)	1

Rear Brake Squeak

Required Tools & Equipment (Continued)

NOTE

- A mechanic’s stethoscope or similar tool may be used in place of ChassisEAR™.
- ChassisEAR™ may be ordered by calling Toyota Approved Dealer Equipment (ADE) at 1-800-368-6787.

Warranty Information

OP CODE	DESCRIPTION	TIME	OFFP	T1	T2
BR1007	Remove and Replace Rear Brake Shims	0.8	42431-12310	36	40

APPLICABLE WARRANTY

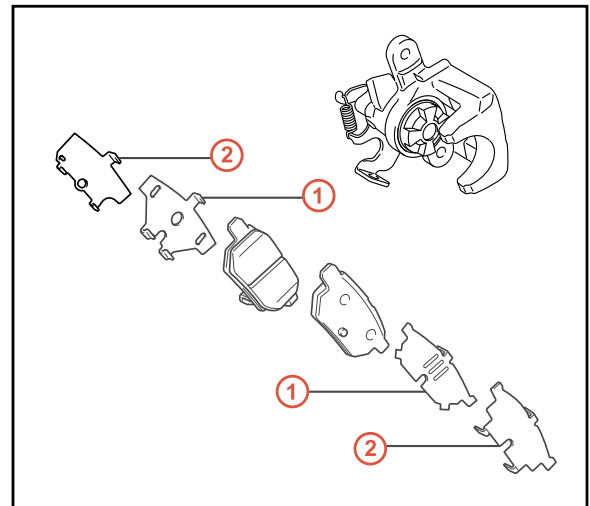
- This repair is covered under the Toyota Comprehensive Warranty. This warranty is in effect for 36 months or 36,000 miles, whichever occurs first, from the vehicle’s in-service date.
- Warranty application is limited to occurrence of the specified condition described in this bulletin.

Repair Procedure

1. Test drive the vehicle to confirm the squeak is coming from the rear brakes. The condition occurs more frequently when backing up during light brake pedal application after cold soak.
2. Remove rear brake shims. Refer to the Technical Information System (TIS) 2010 Prius Repair Manual:

Brake - Brake (Rear) – “Brake (Rear): Rear Brake: [Removal](#)”

Figure 1.



1	Rear No. 1 Disc Brake Anti Squeal Shim
2	Rear No. 2 Disc Brake Anti Squeal Shim

Rear Brake Squeak

Repair Procedure (Continued)

3. Clean the rear brake pad backing plates with a clean shop towel and apply a small amount of black disc brake grease to the backing plate of each rear brake pad.

NOTE

Make sure disc brake grease is not applied to the lining of the rear brake pads.

Figure 2.



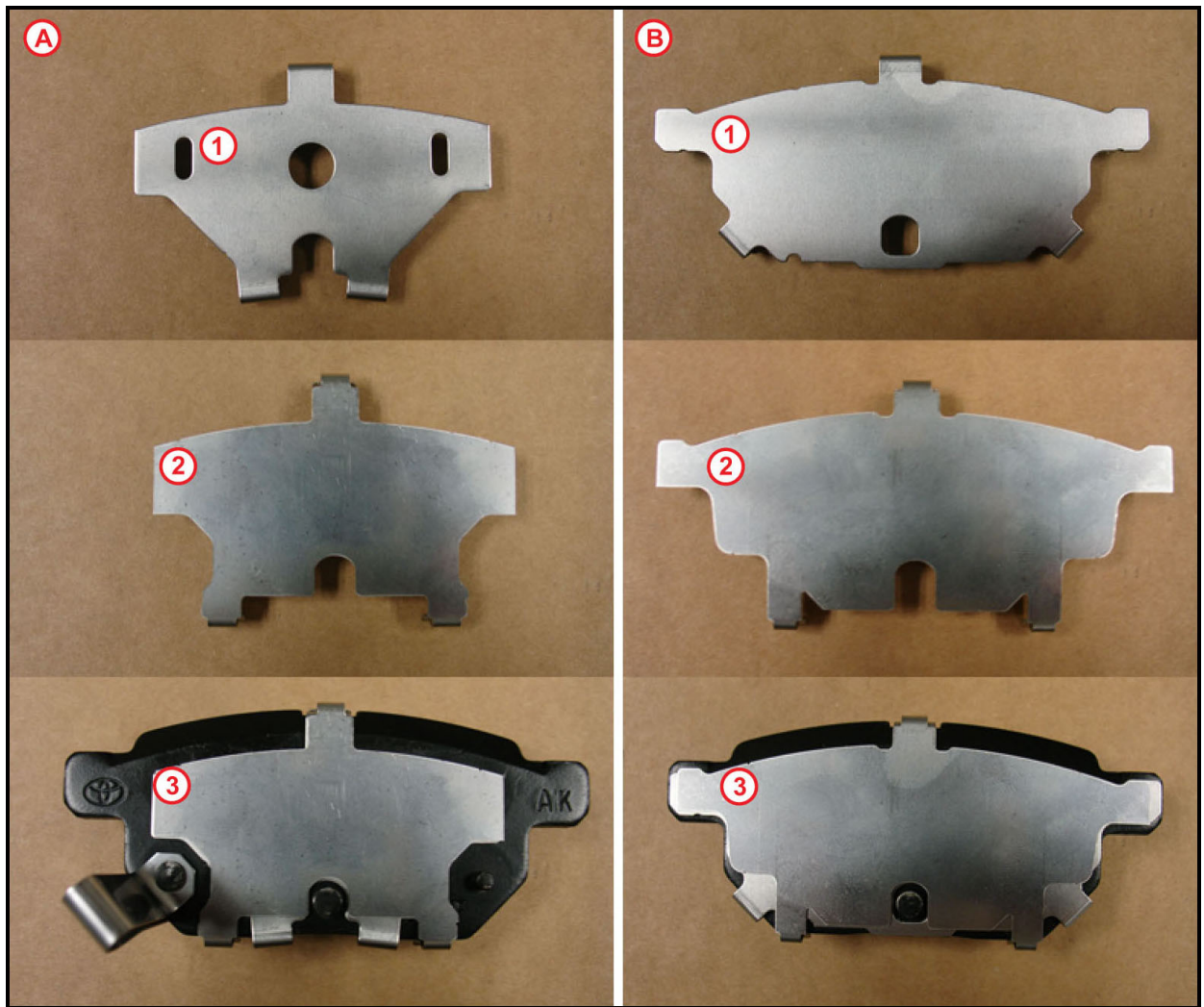
1	Grease Application Area
----------	--------------------------------

Rear Brake Squeak

Repair Procedure (Continued)

4. Install the No. 1 Anti-squeal shims. Install the No. 2 Anti-squeal shims.

Figure 3.



A	Driver side Inboard
B	Driver side Outboard
1	No. 1 Anti-squeal Shim

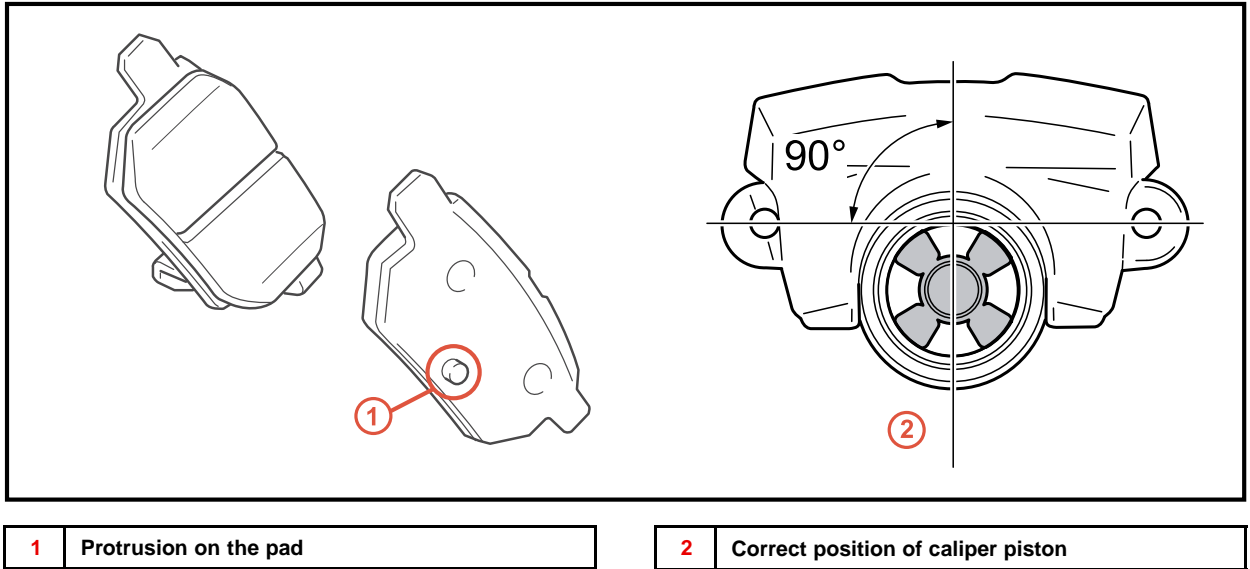
2	No. 2 Anti-squeal Shim
3	Brake Pad Assy

5. Using the Variable Pin Wrench (SST [09960-10010](#)), slowly rotate the caliper piston until the piston groove is positioned as shown in the illustration below.

Rear Brake Squeak

Repair Procedure (Continued)

Figure 4.



CAUTION
Do NOT twist the brake hoses on the rear disc brake caliper assemblies.

6. Install new rear brake anti-squeal shims with brake pads into the rear caliper assemblies brackets. Refer to (TIS), 2010 Prius Repair Manual:

Brake - Brake (Rear) – “Brake (Rear): Rear Brake: [Installation](#)”

NOTE

- When installing the rear disc brake caliper assembly on the rear disc brake caliper mounting bracket, ensure the protrusion on the brake pad is centered in the caliper piston groove.
- It is important to ensure the protrusion is not contacting the outer edges of the caliper piston groove. (both sides)

7. Road test the vehicle to confirm the condition has been reduced.