

# Front Seat Squeak Noise

**Service Category** Vehicle Interior

**Section** Seat

**Market** USA

Toyota Supports  
ASE Certification 

## Applicability

YEAR(S)	MODEL(S)	ADDITIONAL INFORMATION
2004 – 2010	4Runner, Avalon, Camry, Corolla, Echo, FJ Cruiser, Highlander, Land Cruiser, Matrix, Prius, RAV4, Sequoia, Sienna, Solara, Tacoma, Tundra, Yaris	

### TSB REVISION NOTICE

June 10, 2009 Rev1:

- Applicability has been updated to include 2009 and 2010 model year applicable vehicles.
- Warranty Information has been updated.

Any previous printed versions of this service bulletin should be discarded.

### TSB SUPERSESSION NOTICE

The information contained in this TSB supersedes TSB No. NV004–06.

- Applicability has been updated to include 2008 model year applicable vehicles.

TSB No. NV004–06 is Obsolete and any printed versions should be discarded. Be sure to review the entire content of this service bulletin before proceeding.

## Introduction

Some customers may experience a squeak noise due to contact between the seat track locating pin(s) and the floor pan location hole(s). The following procedure describes the repair method to correct this condition.

## Front Seat Squeak Noise

---

### Warranty Information

OP CODE	DESCRIPTION	TIME	OFP	T1	T2
NV5011	R & R LH Front Seat Track Pins (1 seat)	0.5	7#####-#####	91	99
Combo A	R & R RH Front Seat Track Pins (1 seat)	0.5			

#### APPLICABLE WARRANTY

- This repair is covered under the Toyota Comprehensive Warranty. This warranty is in effect for 36 months or 36,000 miles, whichever occurs first, from the vehicle's in-service date.
- Warranty application is limited to correction of a problem based upon a customer's specific complaint.

### Required Tools & Equipment

SPECIAL SERVICE TOOLS (SST'S)	PART NUMBER	QTY
Plastic Pry Tool Set*	<a href="#">00002-06000-01</a>	1

\* Essential SST.

#### NOTE

Additional SSTs may be ordered by calling 1-800-933-8335.

## Front Seat Squeak Noise

---

### Pin Location

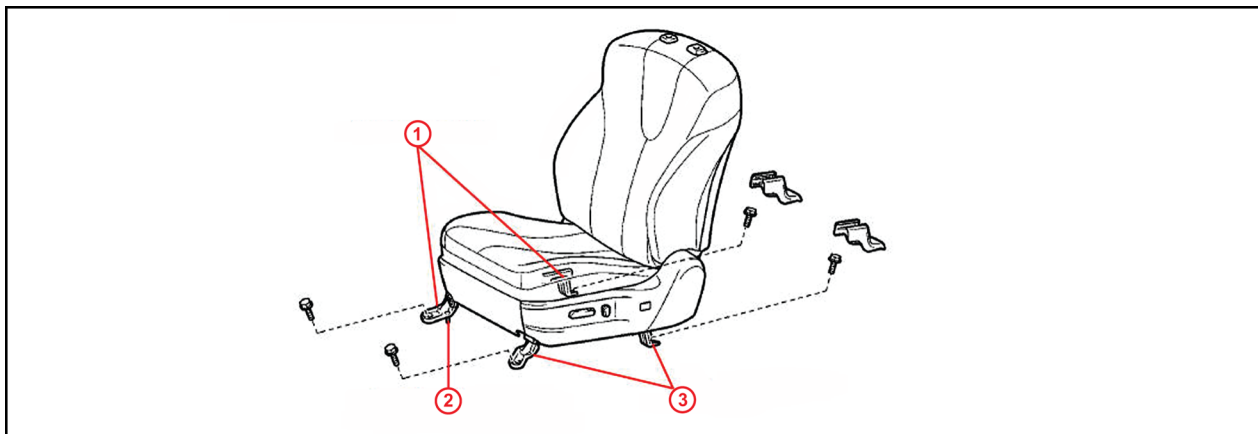
The following table indicates the location and the number of seat track locating pins that should be removed from the seat track assembly:

MODEL	NUMBER OF PINS TO REMOVE	PIN LOCATION
4Runner	2	Front, Inner, & Outer Track
Avalon	2	Front, Inner, & Outer Track
Camry	2	Front, Inner, & Outer Track
Corolla	2	Front, Inner, & Outer Track
Echo	2	Front, Inner, & Outer Track
FJ Cruiser	2	Front, Inner, & Outer Track
Highlander (manual seat)	2	Front, Inner, & Outer Track
Highlander (power seat)	1 (Inner Side ONLY)	Front & Inner Track ONLY
Land Cruiser	2	Front, Inner, & Outer Track
Matrix	2	Front, Inner, & Outer Track
Prius	2	Front, Inner, & Outer Track
RAV4	2	Front, Inner, & Outer Track
Sequoia	2	Front, Inner, & Outer Track
Sienna	2	Front, Inner, & Outer Track
Solara	2	Front, Inner, & Outer Track
Tacoma	2	Front, Inner, & Outer Track
Tundra	2	Front, Inner, & Outer Track
Yaris	2	Front, Inner, & Outer Track

## Front Seat Squeak Noise

### Parts Location

Figure 1.



1	Inner Seat Track
2	Seat Tracking Locating Pin

3	Outer Seat Track
---	------------------

### Repair Procedure

#### CAUTION

- Wear safety gloves to prevent injury to your hands.
- Work must be started more than 90 seconds after the ignition switch is turned to the LOCK position and the negative (–) terminal cable is disconnected from the battery. (The SRS is equipped with a backup power source. If work is started within 90 seconds from disconnecting the negative (–) terminal cable of the battery, the SRS may deploy.)
- The yaw rate sensor is installed under the front RH seat. Be careful NOT to step on the yaw rate sensor after the seat has been removed.

#### HINT

- The installation is the reverse order of removal. However, when there is a special point concerning installation, it is indicated.
- Use the same procedure on the RH side as on the LH side.
- When removing/installing and performing repairs on the passenger seat, perform the Occupant Classification System Zero Point Calibration as outlined in the Diagnostics section of the applicable model year Repair Manual for each model.

## Front Seat Squeak Noise

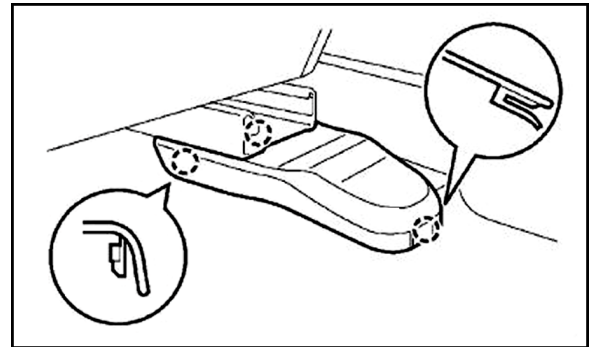
### Repair Procedure (Continued)

1. Disconnect the negative (–) battery terminal.
2. Remove the plastic front seat track covers, use a Plastic Pry Tool to disengage the claws and carefully remove the plastic seat track covers.

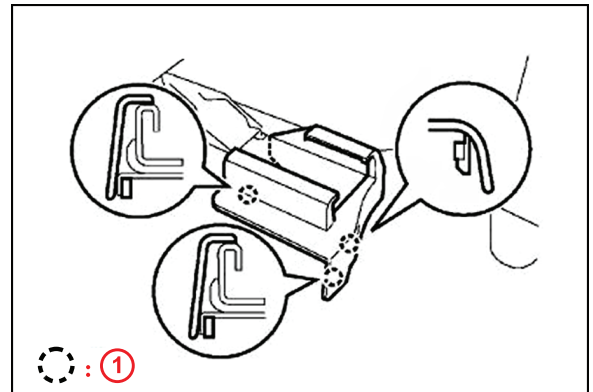
**NOTE**

Refer to the appropriate Toyota Repair Manual for each model for detailed instructions on how to remove the plastic seat track covers.

**Figure 2.**



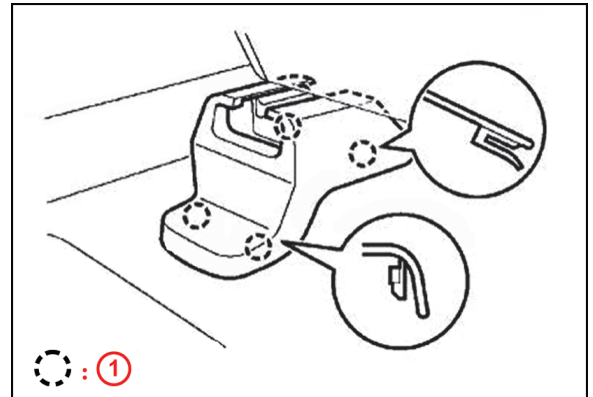
**Figure 3.**



1 Claw

3. Remove the plastic rear seat track covers, use the Plastic Pry Tool to disengage the claws and carefully remove the plastic seat track covers.

**Figure 4.**



1 Claw

# Front Seat Squeak Noise

## Repair Procedure (Continued)

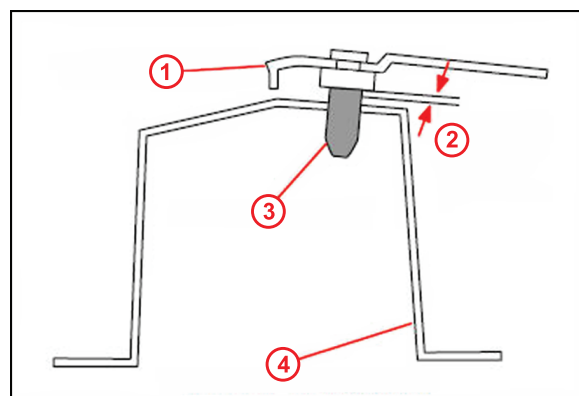
4. Remove the LH front seat assembly.
  - A. Move the seatback to the full upright position.
  - B. Remove the four (4) seat track securing bolts.
  - C. Disconnect the electrical connectors and remove the complete seat assembly.
5. Remove the seat track locating pins.

- A. With the seat removed from the vehicle, tilt the seat assembly backward to gain access to the seat track locating pins.
- B. Use a power cut-off tool to cut off the two (2) locating pins leaving 2 mm (0.1 in.) or less of each pin.

### NOTE

- Do NOT permit the power cut-off tool to contact the seat track. ONLY cut off the shaft of the pin (near the base of the seat track).
- The seat track locating pins' function is to ease installation during manufacturing and does NOT provide any other function.

Figure 5.



1	Seat Rail
2	Cut off at 2 mm or less
3	Seat Locator Pin
4	Front Floor Cross Member

6. Clean and paint bare metal surfaces.
  - A. Remove any metal shavings from the seat track/seat assembly.
  - B. Clean the bare metal surface of the remainder of the seat track locating pin with wax, grease, and silicone remover.
  - C. To prevent corrosion, coat any bare metal surfaces still attached to the seat track with a brush-on type paint.
7. Install LH front seat assembly.
  - A. Place the seat on the cabin floor.
  - B. Reconnect all electrical connectors under the seat.
  - C. Install all four (4) seat track retaining bolts (fingertight).
  - D. Tighten the two (2) front seat track attaching bolts.

## Front Seat Squeak Noise

---

### Repair Procedure (Continued)

**NOTE**

The bolt torque specification varies by model. Please refer to the Repair Manual for the correct bolt torque for the model you are working on.

- E. Tighten the two (2) rear seat track attaching bolts.

**NOTE**

The bolt torque specification varies by model. Please refer to the Repair Manual for the correct bolt torque for the model you are working on.

- F. Reinstall all plastic seat track covers.
8. Repeat steps 1 – 6 for the RH seat assembly.
  9. Reconnect the negative (–) battery terminal.
  10. Test power seat operation and seat heater (if equipped) for proper operation.
  11. Initialize front passenger occupant classification system and re-initialize any other power systems.  
  
Refer to the applicable model and model year repair manual initialization procedures.
  12. Inspect SRS warning light operation.
  13. Test drive vehicle and confirm that the seat squeak has been eliminated.