



**Technical Service
BULLETIN**

November 20, 2007

Title:
REPLACEMENT VIN PLATES
Models:
All Toyota Models

TSB

PG007-07

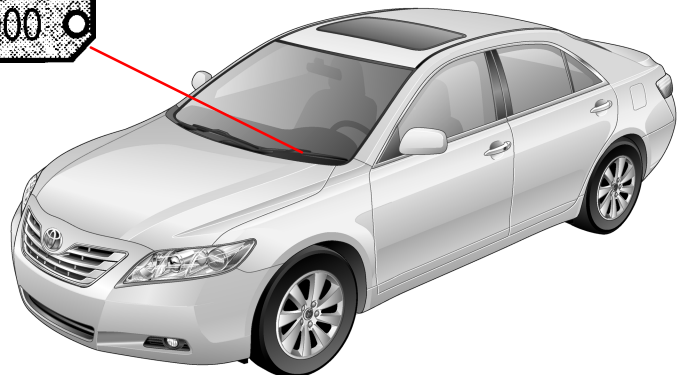
PRODUCT GENERAL INFORMATION

TSB UPDATE NOTICE:

The information contained in this TSB supersedes TSB No. PG009-02. TSB No. PG009-02 is now obsolete and should be discarded. The changes will take place January 1, 2008.

Introduction Replacement **VIN** plates (metal plates riveted to dashboard) **may be** available from Toyota providing the request meets the criteria listed in this TSB.

VIN Plate Location



Applicable Vehicles

- All Toyota vehicles.

Warranty Information

OP CODE	DESCRIPTION	TIME	OFFP	T1	T2
N/A	Not Applicable to Warranty	-	-	-	-



**Replacement
VIN Plate
Criteria**

A replacement VIN plate may be requested ONLY if:

- The vehicle is in an accident and the VIN plate is damaged.
- The vehicle was stolen and the VIN plate is damaged but still available.

NOTE:

- **The original VIN plate being replaced MUST accompany the request.**

- **If the VIN plate is stolen, be sure to contact the State Police or your State's Department of Motor Vehicles (DMV). In most cases, the State DMV will issue a unique number so that the original number can be included on stolen vehicle listings. If this is the case, a replacement VIN plate is NOT available from Toyota. However, the original VIN, NOT the state issued VIN, must be used on all warranty claims.**

**Procurement
Procedure**

To request a replacement VIN plate, complete a copy of the form at the end of this bulletin. Note that the damaged VIN plate **MUST** accompany the request form. Your dealer parts account will be billed \$40.00 for each replacement of a damaged VIN plate.

NOTE:

All replacement VIN plates are subject to approval by the Technical Compliance Department. If you have any specific questions, contact (310) 468-5516.

APPLICATION FOR REPLACEMENT VIN PLATE



REASON FOR REPLACEMENT

ACCIDENT DAMAGE

OTHER _____

REASON/EXPLANATION

PLEASE PROVIDE CORRECT VIN _____



NOTE:

- **The original VIN plate being replaced MUST accompany the request.**
- If a VIN plate is stolen, be sure to contact the State Police or your State's Department of Motor Vehicles (DMV). In most cases the State DMV will issue a unique number so that the original number can be included on stolen vehicle listings. If this is the case, a replacement VIN plate is NOT available from Toyota. However, the original VIN, NOT the state issued VIN, must be used on all warranty claims.
- Your dealer parts account will be billed **\$40.00** for the replacement VIN plate.

DEALER INFORMATION

DEALER CODE:

DEALER NAME: _____

ADDRESS: _____
STREET ADDRESS

CITY, STATE, ZIP CODE

TELEPHONE: () _____
AREA CODE, TELEPHONE NUMBER

CONTACT: _____
FIRST NAME, LAST NAME DEPT.

MAIL (DO NOT FAX) THE COMPLETED REQUEST FORM WITH THE OLD VIN PLATE TO:
TOYOTA MOTOR SALES, U.S.A. INC.
TECHNICAL COMPLIANCE DEPARTMENT, S207
19001 S. WESTERN AVENUE
TORRANCE, CA. 90509-2991