

2008 Toyota Prius fuel injector replacement.

My 2008 Prius has around 286,000 miles. It was running very rough. My check engine light codes indicated I was getting random misfires and codes specific to misfires in each cylinder.

Toyota dealer quoted me a price of around \$1,000-\$1,100 to replace the fuel injectors. I purchased rebuilt fuel injectors on eBay for around \$65.00

(http://www.ebay.com/itm/121312381714?_trksid=p2057872.m2749.l2649&ssPageName=STRK%3AMEBIDX%3AIT).

Previously I had changed the spark plugs and the coils on this car. I also changed the PCV valve and cleaned the MAF sensor.

I couldn't find detailed instructions for changing the fuel injectors, so I wrote this up.

1. Release fuel pressure
 - a. Open gas cap
 - b. Disconnect power from fuel pump. Access is beneath back seat.
 - i. Remove back seat bench. Seat is held down by two clips. Just pull up at the clip location (kind of in the center of each outside seating position.



- c. Access panel is glued down so I used a flat blade screwdriver to pry it up.

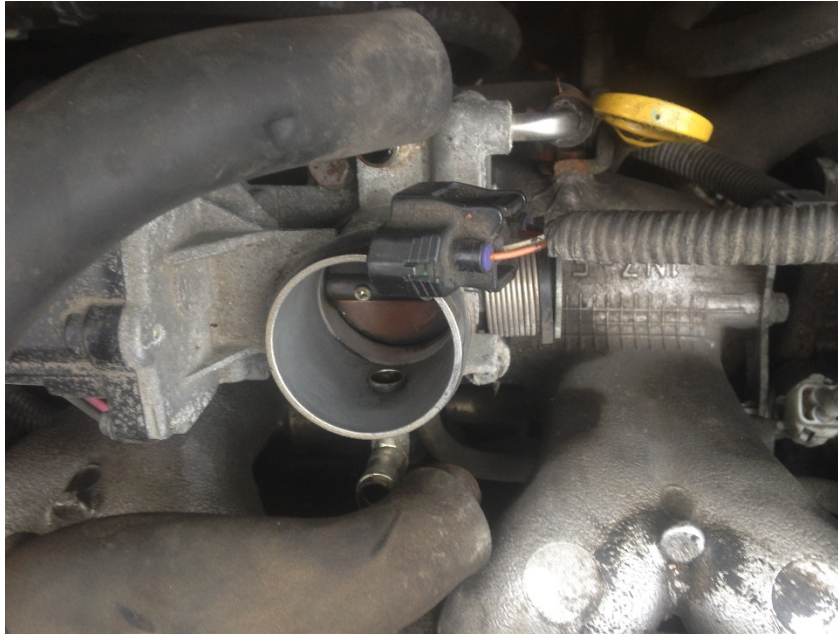


- d. Found three connectors – not sure which is fuel pump so I disconnected all three.



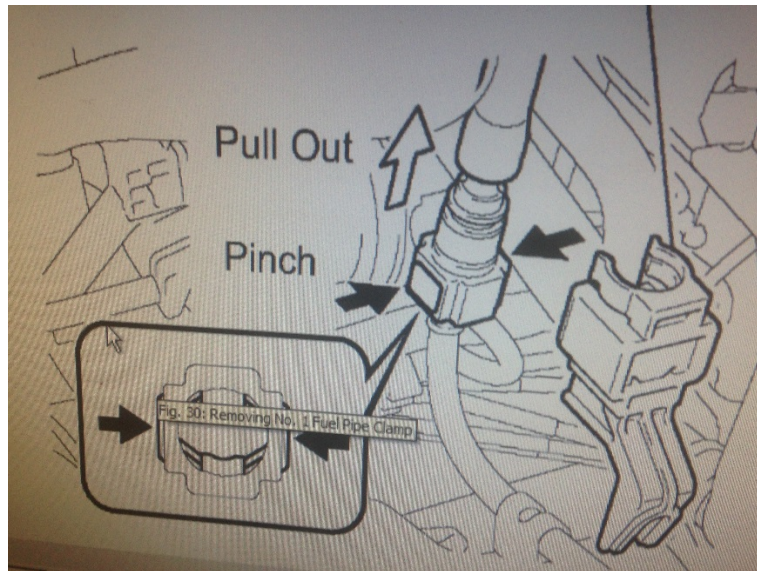
- e. Start the car into Ready and turn the heat or AC on to get the ICE running. Run it until it quits (runs out of gas).
- f. Follow the instructions for removing the PCV valve. I found good instructions here: <http://priusdiy.com/tutorials/engine/pcvvalve.html>. The PCV valve doesn't have to be removed, this gets you access to the fuel injectors and the fuel line removal location.

- g. I also disconnected a few other hoses to make a little extra room.



- h. Disconnect the gas line that is connected to the fuel rail. It can't be removed from the fuel rail, it is disconnected back near the PCV valve. The first picture is of the disconnect clamp with the plastic cover already removed.





- i. Remove the bolts holding the fuel rail in place. If possible, clean some of the gunk out of the area the fuel injectors are plugged into the engine. Pull the fuel rail up and out. I didn't completely remove it, I just pulled it out enough to get access to the fuel injectors. Remove the old fuel injectors by pulling them out of the fuel rail. There will be some gas that leaks out. Clean the area around the engine where the fuel injectors are inserted. Use a rag or small cup to catch it. Insert the new fuel injectors by pushing them back in.





j. Reassemble in the reverse order 😊