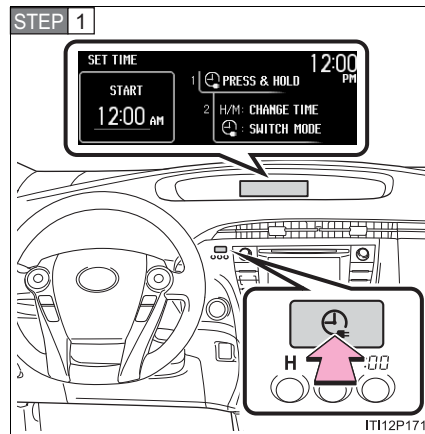


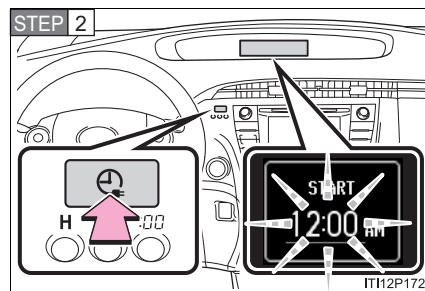
■ Setting the charging timer function



Stop the vehicle and press the charging timer switch.

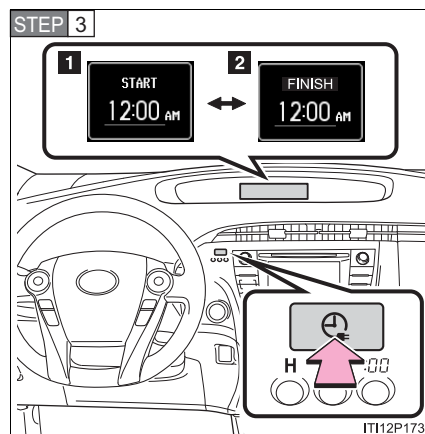
The multi-information display will switch to the charging timer display.

If not changing the set time: go to **STEP 6**



Press and hold the charging timer switch.

The time display will change from solid to flashing.



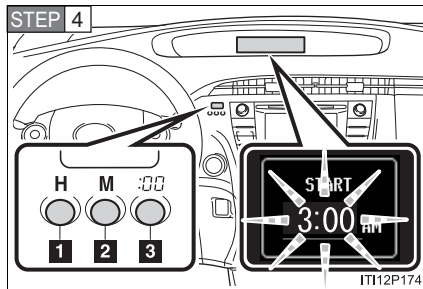
Press the charging timer switch to select a setting mode.

- 1** Start time setting mode
- 2** Finish time setting mode

The mode will switch with each press of the charging timer switch.

1
Before driving

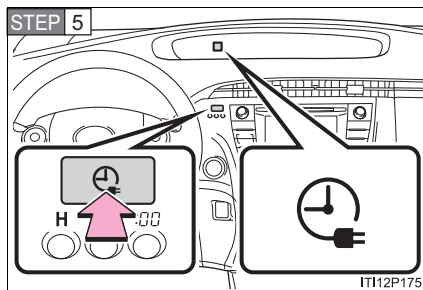
1-2. Charging



Adjust the set time using the time adjustment button. (→P. 275)

- 1 Adjust hours.
- 2 Adjust minutes.
- 3 Round to the nearest hour.*

*: e.g. 1:00 to 1:29 → 1:00
1:30 to 1:59 → 2:00



Press and hold the charging timer switch.

Once set, the time display will change from flashing to solid, and the charging timer indicator on the instrument cluster will come on.

STEP 6 Turn the “POWER” switch off. (→P. 240)

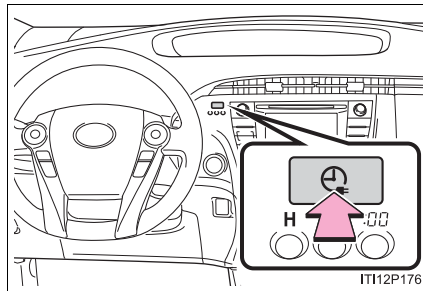
The charging timer indicator will start flashing.

STEP 7 Connect the charging cable to the vehicle. (→P. 80)

Check that the charging indicator (→P. 73) has come on. It will turn off after several seconds.

If the indicator does not come on, re-insert the charging connector. If it still does not come on, check the power supply status using the power indicator on the CCID (Charging Circuit Interrupting Device).

■ Canceling the charging timer function



If the charging timer switch is pressed while the charging timer indicator is illuminated or flashing, the charging timer function will be canceled. Charging will commence immediately if the charging cable is connected to the vehicle.

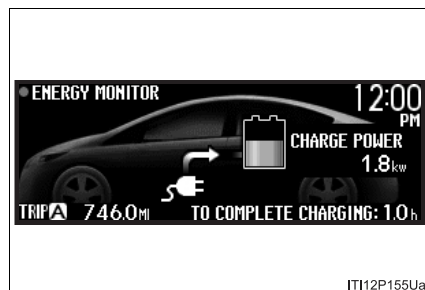
The charging timer indicator will turn off if the charging timer function is canceled.

1
Before driving

Displays shown on the multi-information display

Each type of information related to charging is displayed on the multi-information display.

■ Time until charging is complete



If the "POWER" switch is turned to ON mode during charging, the current charging status and the amount of time needed until charging is complete will be displayed on the energy monitor.

After confirming, switch the "POWER" switch to OFF and turn off the display. The "POWER" switch will turn off automatically after several tens of seconds.