

2017 Prius Prime




TOYOTA | *Let's
Go
Places*

Imagine the new possible. The all-new 2017 Toyota Prius Prime.

Let's put limits in the rearview mirror. Introducing the all-new Prius Prime, the most efficient Toyota hybrid yet. With the power to run in either EV[®] or hybrid driving modes, Prime strikes a harmonious balance between necessity and desire. Designed with intelligent tech, premium materials and thoughtful engineering, Prime represents the next step of our continuous quest to reach more efficient mobility, without compromise. It's time to make the drive toward a better tomorrow even better. And above all, it's time to make the drive fun again. Let's go places.



Advanced shown in Magnetic Gray Metallic.
See numbered footnotes in Disclosures section.

Discover a new freedom that takes you further.

Let's charge toward the next exciting chapter where our vehicles can aim even higher. Prius Prime has an outstanding EPA-estimated 133 MPGe,² thanks to its cutting-edge, lightweight materials, proven hybrid technology and an optimized Plug-in Hybrid Vehicle (PHEV) system. With its EPA-estimated 640-mile total driving range,³ Prime continues to raise the efficiency bar and help you challenge what's possible with the highest EPA-estimated total range of any vehicle in its class.⁵¹ Toyota's legendary hybrid technology was developed to help you get the most out of every drive. Prime's new name comes with a signature design that helps improve aerodynamics and creates a lasting impression. The powertrain is a Toyota first, thanks to a dual motor drive system that improves acceleration in EV Mode¹ for a fun drive. It's an exhilarating experience that elevates your possibilities.



Advanced shown in Magnetic Gray Metallic.
See numbered footnotes in Disclosures section.



—
“Let’s see what lies ahead.
Let’s make the impossible possible.”
—



Innovative touches with style to match.

Prius Prime is designed to enhance your drive with innovation that lies above and beneath the surface of the artfully sculpted exterior. The union of purposeful, aerodynamic elements and lightweight components helps increase your efficiency. Not to mention the EPA-estimated 25 miles⁴ in EV Mode! All of this helps Prime strike the perfect balance between its elevated efficiency and eye-catching style. It's an uncompromising approach that ensures you'll enjoy every moment.



CARBON-FIBER-REINFORCED-POLYMER REAR HATCH

Prime's rear hatch is made of carbon-fiber-reinforced polymer, a first for Toyota. This strong yet lightweight material makes opening and closing the hatch effortless. Found only on Prime, the dual-wave rear glass design flows seamlessly into the rear spoiler, helping reduce air resistance. Advanced aerodynamics and lightweight materials like these help increase efficiency and elevate your drive.



STANDARD LED LIGHTING

Prime features visually striking Quad-LED projector headlights, available LED fog lights and accent lights to help you see more of what matters. Bright and efficient, the rear taillights are also equipped with LEDs that consume less energy.



15-IN. ALLOY WHEELS

Prime's lightweight aluminum alloy wheels are designed to perform. The low-rolling resistance tires and wind-cheating wheel covers help enhance fuel efficiency and make your drive a quiet, comfortable one.

DESIGNED WITH EFFICIENCY



Plus shown in Titanium Glow.

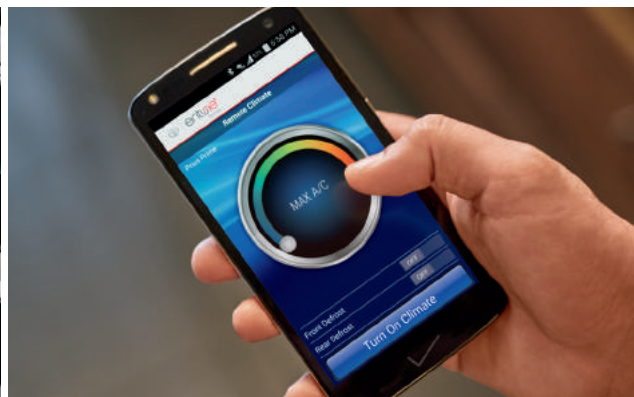
A display as big as your imagination.

Prime has innovative tech that you just can't miss. Its available 11.6-in. HD multimedia display is Toyota's most impressive yet. Intuitive pinch, zoom, tap and swipe gestures create a familiar smartphone-like experience while giving you easy access to the features that matter most. So whether you're using the Entune® App Suite⁵ to plan your next night out, or using the navigation⁶ to help you get there, you've got the power to do it all.



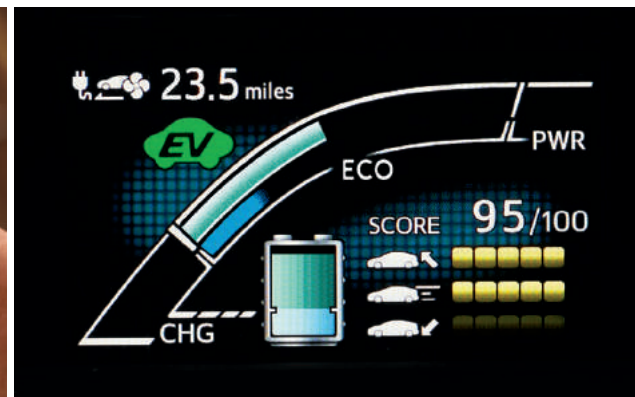
MULTI-INFORMATION DISPLAY (MID)

The customizable 4.2-in. color dual Multi-Information Display screens let you keep track of Prime's vitals at a glance. Use the steering wheel-mounted controls to keep track of real-time driving data, up-to-date fuel economy, energy use, and more — all while keeping both hands on the wheel.



REMOTE CLIMATE²

Take control and use your smartphone with the available Prime apps⁵ including the Remote Climate app. This way, you can check your Prime's current temperature setting and change it to your liking — all before you even get in. When Prime is plugged in, the power used for Remote Climate is pulled straight from the grid so your battery keeps its charge. Now your comfort is always within reach.



INTELLIGENT DRIVE COACH

This available intelligent technology, called Predictive Efficient Drive,⁹ helps boost fuel efficiency by learning your routine stopping patterns. When approaching a recorded stop, an icon will display and suggest the optimal time to release the accelerator. Regenerative braking also activates sooner to recover more energy for the hybrid battery.



Advanced interior shown in Black SofTex® trim.

Watching your back. So you can move ahead with confidence.

Enjoy every journey, from crosstown to cross country, all from inside Prius Prime. Everything has been purposefully designed with an uncompromising approach to serve your needs. And Prime's innovative technologies like available Intelligent Clearance Sonar (ICS)³⁶ with Intelligent Parking Assist (IPA)³⁷ help lessen the challenges found in the everyday drive. It's smart tech and comfort designed to give you the peace of mind to focus on the drive ahead.



INTELLIGENT CLEARANCE SONAR³⁶

Be aware of what's around you. As you park, available Intelligent Clearance Sonar is designed to scan for stationary objects like walls or posts that are within close proximity. If Prime anticipates a collision, an audible and visual alert will be emitted, engine or motor output reduced, and if needed, the brakes will automatically be applied to help bring Prime to a halt.



BACKUP CAMERA¹⁴

When in Reverse, Prime's standard integrated backup camera uses a wide-angle lens to display a large viewing area. Clearly marked lines on the screen show the distance, giving you more confidence to get out of any spot — tricky or not.



INTELLIGENT PARKING ASSIST³⁷

Available Intelligent Parking Assist helps you navigate and conquer those difficult parking situations with the push of a button. Prime automatically controls the steering wheel while you control the gas and brake, and helps guide you into an open parking space.

CONVENIENCE



Advanced shown in Magnetic Gray Metallic.

Amenities that meet your aspirations.

Prime's cabin features a modern design and premium materials throughout. Thoughtful interior touches delight the senses while smart tech brings convenience and innovative thinking to every trip. Prime's front seats feature deep bolsters to help keep you in place when the road twists, for extra confidence behind the wheel.



COLOR HEAD-UP DISPLAY (HUD)

Prius Prime's available color Head-Up Display uses aircraft-inspired technology to project information about your drive on the windshield, where it's convenient to see. Easily view the current speed, energy monitor, turn-by-turn navigation directions, battery charge, and Toyota Safety Sense™ (TSS)¹³ alerts — all without taking your eyes off the road.



HEATED STEERING WHEEL

Prime's available heated steering wheel warms things up when it's cold outside. Once you're comfortable, you can use the steering wheel-mounted controls for quick access to audio, phone, climate and the Multi-Information Display.



JBL® PREMIUM AUDIO SYSTEM

Sound all around. The available JBL® Premium Audio features ten JBL® GreenEdge™ speakers to amplify output from less energy. What you hear is clear sound imaging that will elevate any drive. You can also use the USB port⁶ or Bluetooth^{®10} hands-free wireless technology to bring your favorite playlist, and backup singers, along for the ride.⁹



Advanced interior shown in Black SofTex® trim.

INTERIOR CONVENIENCE



Advanced interior shown in Black SofTex® trim.
See numbered footnotes in Disclosures section.

**60/40 SPLIT FOLD-DOWN
REAR SEATS**

Prime's 60/40 split fold-down rear seats fold to maximize cargo space and versatility. With 19.8 cu. ft. of space, the largest cargo capacity in its class;⁵² it will help you enjoy even more room — and more adventures.¹⁷



**QI-COMPATIBLE WIRELESS
SMARTPHONE CHARGING²²**

With Prime's available Qi-compatible wireless smartphone charging, you can charge your Qi-compatible smartphone or other compatible device without wires or worry. Place it on the nonslip holder and charge up before getting to your destination.



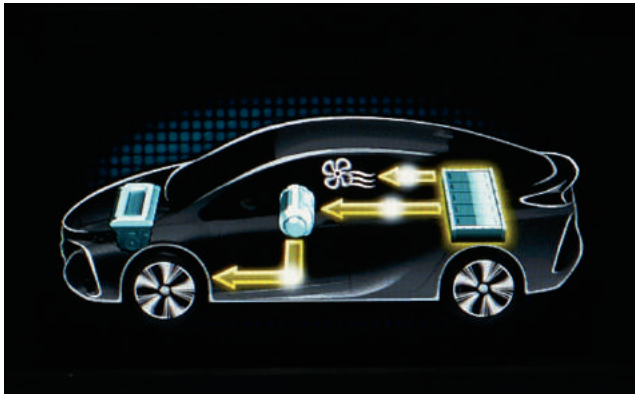
**STANDARD HEATED
FRONT SEATS**

Prime comes with standard heated front seats, so the comfort of you and your passenger is a top priority.



All the range without the anxiety.

Every last detail of Prius Prime has been optimized to help make it the most advanced — and efficient — Prius yet. Advanced, lightweight materials, like the Toyota-first carbon-fiber-reinforced-polymer rear hatch, proven hybrid technology and an optimized Plug-in Hybrid Vehicle (PHV) system all play their part to enhance Prius Prime's performance while maximizing efficiency. Simply charge from a standard household outlet¹⁹ and go even farther.



EV MODE¹⁹

With a charged battery, the driver can experience electrifying performance. Prius Prime features a Toyota-first dual motor generator drive system that gives a fun acceleration feel and enables electric driving mode at full highway speeds. The system's output and regeneration conditions are clearly displayed in real-time on the MID, so you can see your efficiency in action.



HV/EV AUTO DRIVE MODES

Prime also offers two other driving modes so that the driver stays in control: EV Auto Mode⁵³ and HV Mode. EV Auto Mode intelligently selects between EV and hybrid driving based on demand and driving conditions to optimize your efficiency. HV Mode efficiently combines the gas engine and electrical power from the HV battery to drive Prime.



CHARGE SCHEDULING

Charge scheduling gives you the option to charge during off-peak hours to help reduce electricity costs and support efficient grid usage in your community. Simply program your preferred charge start or departure time from Prime so it can be topped off and ready to roll when you are. And, you can even start your charge from afar through the available Prime apps.¹⁵

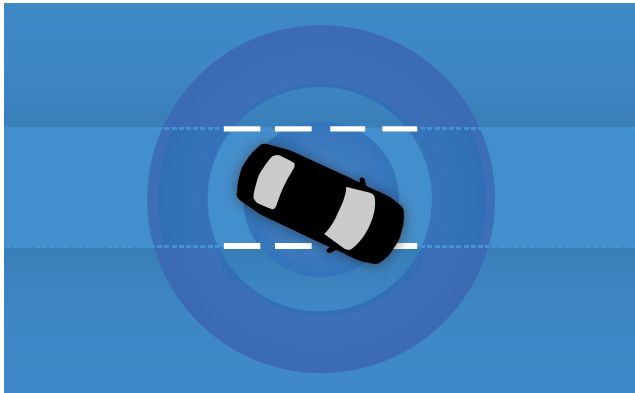
PLUG-IN/HYBRID FUEL EFFICIENCY



Premium shown in Blue Magnetism.

Active safety comes standard.

Prius Prime's standard Toyota Safety Sense™ P (TSS-P)²⁸ is an active safety package that combines the Pre-Collision System²⁹ with Pedestrian Detection³⁰ (PCS w/PD), Lane Departure Alert with Steering Assist (LDA w/SA),³¹ Automatic High Beams (AHB)³² and Full-Speed Range Dynamic Radar Cruise Control (DRCC)³³ to assist you. TSS-P's comprehensive features create in-the-moment safety designed to help keep you safe under certain circumstances.



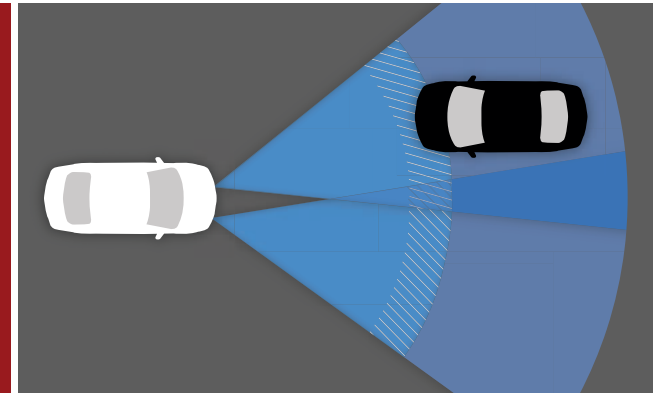
LANE DEPARTURE ALERT WITH STEERING ASSIST³¹

If an inadvertent lane departure is detected and there are visible lane markings, the Lane Departure Alert system will issue both an audible alert and visual warning on the MID screen. If the system determines that the driver is not taking corrective steering action, the Steering Assist function will initiate and provide gentle corrective steering when necessary to help keep the vehicle in the lane.



PRE-COLLISION SYSTEM²⁹ WITH PEDESTRIAN DETECTION³⁰

Pre-Collision System with Pedestrian Detection helps keep the road safe by detecting a vehicle or a pedestrian in certain situations. By combining millimeter-wave radar with a camera capable of shape recognition, the system provides an audio/visual alert warning you of a possible collision with a pedestrian under certain circumstances. If you don't react, automatic braking support helps mitigate the potential for a collision.



AUTOMATIC HIGH BEAMS³²

Prime enhances visibility and helps make nighttime driving safe. The Automatic High Beam system uses a camera to help detect oncoming vehicles as far away as 2000 feet and, depending on the circumstances, it can automatically switch the high beams on and off, helping make it easier for other drivers on the road.

TOYOTA SAFETY SENSE™ (TSS)²⁸



Advanced shown in Magnetic Gray Metallic; **Plus** shown in Titanium Glow.

See numbered footnotes in Disclosures section.

Smart tech for a safe drive.

Prepare for the unexpected. Prius Prime comes standard with an advanced suite of six safety features. The Star Safety System™ includes Enhanced Vehicle Stability Control (VSC);²⁴ Traction Control (TRAC), Anti-Lock Brake System (ABS), Electronic Brake-force Distribution (EBD), Brake Assist (BA)²⁵ and Smart Stop Technology® (SST).²⁶ Prime also comes with eight airbags,²⁷ including a driver and front passenger Advanced Airbag System, driver and front passenger seat-mounted side airbags, front and rear side curtain airbags, a driver's knee airbag and a front passenger seat cushion airbag, to help you drive with more confidence.



RAIN-SENSING WIPERS

Keeping your view clear. Between light rain and heavy downpours, Prime's available rain-sensing variable windshield wipers can be set to automatically activate depending on the amount of rain on the windshield and the speed of the car. It's a convenience that helps you stay focused on the road.



BLIND SPOT MONITOR (BSM)³⁹

See more of what matters. When a vehicle in the next lane enters your vehicle's blind spot on either side, the available Blind Spot Monitor is designed to illuminate the indicator in that sideview mirror. If you continue to signal a lane change to that lane, the indicator will flash to get your attention.



REAR CROSS-TRAFFIC ALERT (RCTA)⁴⁰

Watching out for you. In Reverse, Prime's available Rear Cross-Traffic Alert uses sensors to detect vehicles approaching from either side. If the system senses cross traffic, it warns you by flashing the side mirror indicators and sounding a warning tone.

SAFETY



Advanced shown in Blue Magnetism.



Plus

Powertrain

- 1.8L 4-Cylinder Engine with Hybrid Synergy Drive®
- Electronically controlled Continuously Variable Transmission (ECVT)
- 55 city/53 highway/54 combined EPA-estimated mpg⁴⁶
- 133 EPA-estimated MPGe⁴⁷
- 640-mile EPA-estimated total driving range⁴⁸
- 25-mile EPA-estimated EV Mode¹⁹ driving range⁴⁹

Exterior Features

- Quad-LED projector headlights with auto level control and auto-off feature
- LED Daytime Running Lights (DRL) with on/off feature
- LED taillights and stop lights
- Patterned acrylic grille overlay with active grille shutter
- Heated power outside mirrors with folding feature
- 15-in. 5-spoke alloy wheels with two-tone wheel covers and P195/65R15 tires
- Washer-linked variable intermittent windshield wipers
- Dual-wave rear glass design
- Carbon-fiber-reinforced-polymer rear hatch
- Charge port with illumination and charging indicator light

Interior Features

- Remote A/C System²
- Smart-flow climate control system with pollen filtration
- Entune™ Premium Audio with Integrated Navigation³ and App Suite⁴ — includes Entune™ Multimedia Bundle⁵ (7-in. high-resolution touch-screen with split-screen display, AM/FM CD player, six speakers, auxiliary audio jack, USB 2.0 port⁶ with iPod^{®7} connectivity and control, advanced voice recognition⁸ hands-free phone capability, phone book access and music streaming⁹ via *Bluetooth*^{®10} wireless technology), Siri[®] Eyes Free,¹¹ Entune[®] App Suite⁴ HD Radio^{™12} Technology, HD Radio[™] Predictive Traffic and Doppler Weather overlay, AM/FM cache radio, SiriusXM[®] Satellite Radio¹³ with 3-month complimentary SiriusXM All Access trial, Gracenote[®] album cover art and integrated backup camera¹⁴ display. Access to Entune[®] App Suite⁴ is subscription-free. See toyota.com/entune for details.
- Entune[®] App Suite⁴ — includes Destination Search, iHeartRadio, MovieTickets.com, OpenTable,[®] Pandora,^{®17} Facebook Places, Yelp[®] and Slacker Radio; real-time info including traffic, weather, fuel prices, sports and stocks. Access to Entune[®] App Suite⁴ is subscription-free. See toyota.com/entune for details.
- Integrated backup camera¹⁴

- 4.2-in. color dual Multi-Information Display (MID) with customizable screens including Energy Monitor, Hybrid System Indicator and Eco Score, Eco Savings Record, Drive Monitor, Eco Diary, climate control, driver support systems, audio system content, and navigation system content
- 4-passenger seating with 60/40 split fold-down rear seats with center armrest with cup holders and center console
- SofTex[®]-trimmed tilt/telescopic steering wheel with audio, climate, Multi-Information Display (MID) and *Bluetooth*^{®10} hands-free phone controls
- Digital instrumentation with speedometer, hybrid system power meter, fuel gauge, odometer, current fuel economy, shift-position indicator, EV¹⁹/hybrid mode indicator, and drive mode indicator
- Fabric-trimmed heated front seats with armrests and seatback pockets; 6-way adjustable driver's seat; 4-way adjustable front passenger seat
- Smart Key System²⁰ on driver's door with Push Button Start
- Power windows with auto up/down
- Dual sun visors with illuminated vanity mirrors
- Power door locks
- Rear center console with armrest, storage compartment and two rear cup/bottle holders
- Cargo area lightweight tonneau cover
- One front and one rear 12V auxiliary power outlets
- One front USB power outlet⁶
- Rear dome light
- Cargo area light
- Front-door storage pockets with sculpted bottle holders; rear-door storage bottle holders
- Foot pedal parking brake
- Charge cable for standard outlet (120V)²³

Safety Features

- Star Safety System™ — includes Enhanced Vehicle Stability Control (VSC),²⁴ Traction Control (TRAC), Anti-lock Brake System (ABS), Electronic Brake-force Distribution (EBD), Brake Assist (BA)²⁵ and Smart Stop Technology[®] (SST)²⁶
- Driver and front passenger Advanced Airbag System²⁷
- Driver and front passenger front seat-mounted side airbags, passenger seat cushion airbag, driver's knee airbag and front and rear side curtain airbags²⁷
- Toyota Safety Sense™ P (TSS-P)²⁸ — Pre-Collision System²⁹ with Pedestrian Detection³⁰ (PCS w/PD), Lane Departure Alert with Steering Assist (LDA w/SA),³¹ Automatic High Beams (AHB)³² and Full-Speed Range Dynamic Radar Cruise Control (DRCC)³³
- LATCH (Lower Anchors and Tethers for CHildren) includes lower anchors on rear seats
- Tire Pressure Monitor System (TPMS)³⁴
- Vehicle Proximity Notification System (VPNS)³⁵
- Hill Start Assist Control (HAC)³⁸
- Engine immobilizer⁴¹
- Tire Repair System
- Additional year of roadside assistance,⁴² for a total of 3 years of roadside assistance from date of purchase



Premium

Adds to or replaces features offered on Plus

Powertrain

- 1.8L 4-Cylinder Engine with Hybrid Synergy Drive®
- Electronically controlled Continuously Variable Transmission (ECVT)
- 55 city/53 highway/54 combined EPA-estimated mpg⁴⁶
- 133 EPA-estimated MPGe⁴⁷
- 640-mile EPA-estimated total driving range⁴⁸
- 25-mile EPA-estimated EV Mode¹⁹ driving range⁴⁹

Exterior Features

- Quad-LED projector headlights with auto level control and auto on/off feature
- Smart charging cable lock

Interior Features

- Entune™ Premium Audio with Integrated Navigation³ and App Suite⁴ — includes Entune™ Multimedia Bundle⁵ (**11.6-in. HD multimedia display**, MP3/WMA playback capability, six speakers, auxiliary audio jack, USB 2.0 port⁶ with iPod^{®7} connectivity and control, advanced voice recognition⁸ hands-free phone capability, phone book access and music streaming⁹ via *Bluetooth*^{®10} wireless technology), Siri[®] Eyes Free,¹¹ Entune[®] App Suite⁴ HD Radio^{™12} Technology, HD Radio[™] Predictive Traffic and Doppler Weather overlay, AM/FM cache radio, SiriusXM[®] Satellite Radio¹³ with 3-month complimentary SiriusXM All Access trial, Gracenote[®] album cover art, Charging Station Map and integrated backup camera¹⁴ display. Access to Entune[®] App Suite⁴ is subscription-free. See toyota.com/entune for details.
- Predictive Efficient Drive¹⁸
- SofTex[®]-trimmed heated front seats with armrests and seatback pockets; 8-way power-adjustable driver's seat with power lumbar support; 4-way adjustable front passenger seat
- Smart Key System²⁰ on three doors with Push Button Start and remote illuminated entry
- Qi-compatible wireless smartphone charging²² with charge indicator light



Advanced

Adds to or replaces features offered on Premium

Powertrain

- 1.8L 4-Cylinder Engine with Hybrid Synergy Drive®
- Electronically controlled Continuously Variable Transmission (ECVT)
- 55 city/53 highway/54 combined EPA-estimated mpg⁴⁶
- 133 EPA-estimated MPGe⁴⁷
- 640-mile EPA-estimated total driving range⁴⁸
- 25-mile EPA-estimated EV Mode¹⁹ driving range⁴⁹

Exterior Features

- Integrated LED fog lights and LED accent lights
- Rain-sensing variable intermittent windshield wipers

Interior Features

- Entune™ Premium JBL® Audio with Integrated Navigation,³ App Suite⁴ and Prime Apps¹⁵ — includes Entune™ Multimedia Bundle⁵ (**11.6-in. HD multimedia display**, AM/FM, MP3/WMA playback capability, ten JBL® GreenEdge™ speakers, auxiliary audio jack, USB 2.0 port⁶ with iPod®²⁷ connectivity and control, advanced voice recognition,⁵ hands-free phone capability, phone book access and music streaming⁹ via *Bluetooth*®¹⁰ wireless technology), Siri® Eyes Free,¹¹ Entune® App Suite,⁵ HD Radio™¹² Technology, HD Radio™ Predictive Traffic and Doppler Weather overlay, AM/FM cache radio, SiriusXM® Satellite Radio¹³ with 3-month complimentary SiriusXM All Access trial, Gracenote® album cover art, integrated backup camera¹⁴ display and Prime apps¹⁵ (Remote Charge Management, Charging Station Map, ECO Dashboard, Remote Climate⁷ and Vehicle Finder) with 3-year complimentary trial. Access to Entune® App Suite⁴ is subscription-free. See toyota.com/entune for details. Access to Prime apps¹⁵ requires an active Safety Connect®¹⁶ subscription after the 3-year complimentary trial. See toyota.com/safety-connect for details.
- Heated steering wheel
- Auto-dimming rearview mirror with HomeLink®²¹ universal transceiver
- Cargo area heavy sliding tonneau cover

Safety Features

- Safety Connect®¹⁶ — includes Emergency Assistance, Stolen Vehicle Locator, Roadside Assistance and Automatic Collision Notification. Available by subscription. (Complimentary 3-year trial subscription.) See toyota.com/safety-connect for details.
- Color Head-Up Display (HUD) with speedometer, navigation, Hybrid System Indicator, battery charge, and Toyota Safety Sense™ P (TSS-P)²⁸ alerts
- Intelligent Clearance Sonar (ICS)³⁶ with Intelligent Parking Assist (IPA)³⁷
- Blind Spot Monitor (BSM)³⁹ and Rear Cross-Traffic Alert (RCTA)⁴⁰

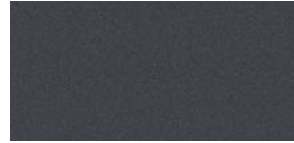
Color



Blue Magnetism



Hypersonic Red⁵⁴



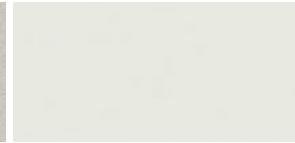
Magnetic Gray Metallic



Classic Silver Metallic



Titanium Glow



Blizzard Pearl⁵⁴

Trim

Also available in



Plus fabric shown in Black



Moonstone fabric



Premium and Advanced SofTex® shown in Black



Moonstone SofTex®

Wheel



15-in. 5-spoke alloy wheel with two-tone wheel cover

*Not all colors and trims available on all model grades. See dealer for details. See numbered footnotes in Disclosures section.

ACCESSORIES

Add the final touch to your Prius Prime with a wide range of available Genuine Toyota Accessories. Make your Prime reflect your personal style. Some accessories may not be available in all regions of the country. For a complete list of accessories, go to toyota.com/prius-prime or see your Toyota dealer for details.

15-in. 10-spoke alloy wheels
Aero side splitter
Alloy wheel locks
All-weather floor liners⁵⁵
Body side moldings

Cargo cross bars
Cargo tote⁴⁵
Cargo tray⁴⁵
Carpet cargo mat
Carpet floor mats⁵⁵

Coin holder/ashtray cup
Door edge guards
Emergency assistance kit
First aid kit
Illuminated doorsills

Paint protection film⁵⁶
Rear bumper appliqué
Security system
Universal tablet holder



Body side moldings



Rear bumper appliqué



Cargo cross bars



Aero side splitter



Cargo tray⁴⁵



Carpet floor mats⁵⁵



Illuminated doorsills



15-in. 10-spoke alloy wheels

FEATURES¹


EXTERIOR	PLUS	PREMIUM	ADVANCED		PLUS	PREMIUM	ADVANCED
Quad-LED projector headlights with auto level control and auto-off feature	S	—	—	Washer-linked variable intermittent windshield wipers	S	S	—
Quad-LED projector headlights with auto level control and auto on/off feature	—	S	S	Rain-sensing variable intermittent windshield wipers	—	—	S
LED Daytime Running Lights (DRL) with on/off feature	S	S	S	Dual-wave rear glass design	S	S	S
Integrated LED fog lights and LED accent lights	—	—	S	Carbon-fiber-reinforced-polymer rear hatch	S	S	S
LED taillights and stop lights	S	S	S	Charge port with illumination and charge indicator light	S	S	S
Patterned acrylic grille overlay with active grille shutter	S	S	S	Smart charging cable lock	—	S	S
Heated power outside mirrors with folding feature	S	S	S				
15-in. 5-spoke alloy wheels with two-tone wheel covers and P195/65R15 tires	S	S	S				
INTERIOR							
Remote A/C System ²	S	S	S	4.2-in. color dual Multi-Information Display (MID) with customizable screens including Energy Monitor, Hybrid System Indicator and Eco Score, Eco Savings Record, Drive Monitor, Eco Diary, climate control, driver support systems, audio system content and navigation system content	S	S	S
Smart-flow climate control system with pollen filtration	S	S	S	Predictive Efficient Drive ¹⁸	—	S	S
Entune™ Premium Audio with Integrated Navigation ³ and App Suite ⁴ — includes Entune™ Multimedia Bundle ⁵ (7-in. high-resolution touch-screen with split-screen display, AM/FM CD player, six speakers, auxiliary audio jack, USB 2.0 port ⁶ with iPod ^{®7} connectivity and control, advanced voice recognition ⁸ hands-free phone capability, phone book access and music streaming ⁹ via Bluetooth ^{®10} wireless technology), Siri [®] Eyes Free, ¹¹ Entune [®] App Suite, ⁴ HD Radio ^{™12} Technology, HD Radio [™] Predictive Traffic and Doppler Weather overlay, AM/FM cache radio, SiriusXM [®] Satellite Radio ¹³ with 3-month complimentary SiriusXM All Access trial, Gracenote [®] album cover art and integrated backup camera ¹⁴ display. Access to Entune [®] App Suite ⁴ is subscription-free. See toyota.com/entune for details.	S	—	—	4-passenger seating with 60/40 split fold-down rear seats with center armrest with cup holders and center console	S	S	S
Entune™ Premium Audio with Integrated Navigation ³ and App Suite ⁴ — includes Entune™ Multimedia Bundle ⁵ (11.6-in. HD multimedia display , MP3/WMA playback capability, six speakers, auxiliary audio jack, USB 2.0 port ⁶ with iPod ^{®7} connectivity and control, advanced voice recognition ⁸ hands-free phone capability, phone book access and music streaming ⁹ via Bluetooth ^{®10} wireless technology), Siri [®] Eyes Free, ¹¹ Entune [®] App Suite, ⁴ HD Radio ^{™12} Technology, HD Radio [™] Predictive Traffic and Doppler Weather overlay, AM/FM cache radio, SiriusXM [®] Satellite Radio ¹³ with 3-month complimentary SiriusXM All Access trial, Gracenote [®] album cover art, Charging Station Map and integrated backup camera ¹⁴ display. Access to Entune [®] App Suite ⁴ is subscription-free. See toyota.com/entune for details.	—	S	—	SofTex [®] -trimmed tilt/telescopic steering wheel with audio, climate, Multi-Information Display (MID) and Bluetooth ^{®10} hands-free phone controls	S	S	S
Entune™ Premium JBL [®] Audio with Integrated Navigation, ³ App Suite ⁴ and Prime Apps ¹⁵ — includes Entune™ Multimedia Bundle ⁵ (11.6-in. HD multimedia display , AM/FM, MP3/WMA playback capability, ten JBL [®] GreenEdge™ speakers, auxiliary audio jack, USB 2.0 port ⁶ with iPod ^{®7} connectivity and control, advanced voice recognition ⁸ hands-free phone capability, phone book access and music streaming ⁹ via Bluetooth ^{®10} wireless technology), Siri [®] Eyes Free, ¹¹ Entune [®] App Suite, ⁴ HD Radio ^{™12} Technology, HD Radio [™] Predictive Traffic and Doppler Weather overlay, AM/FM cache radio, SiriusXM [®] Satellite Radio ¹³ with 3-month complimentary SiriusXM All Access trial, Gracenote [®] album cover art, integrated backup camera ¹⁴ display and Prime apps ¹⁵ (Remote Charge Management, Charging Station Map, ECO Dashboard, Remote Climate ² and Vehicle Finder) with 3-year complimentary trial. Access to Entune [®] App Suite ⁴ is subscription-free. See toyota.com/entune for details. Access to Prime apps ¹⁵ requires an active Safety Connect ^{®16} subscription after the 3-year complimentary trial. See toyota.com/safety-connect for details.	—	—	S	Heated steering wheel	—	—	S
Entune [®] App Suite ⁴ — includes Destination Search, iHeartRadio, MovieTickets.com, OpenTable, [®] Pandora, ^{®17} Facebook Places, Yelp [®] and Slacker Radio; real-time info including traffic, weather, fuel prices, sports and stocks. Access to Entune [®] App Suite ⁴ is subscription-free. See toyota.com/entune for details.	S	S	S	Digital instrumentation with speedometer, hybrid system power meter, fuel gauge, odometer, current fuel economy, shift-position indicator, EV ¹⁹ /hybrid mode indicator, and drive mode indicator	S	S	S
Integrated backup camera ¹⁴	S	S	S	Fabric-trimmed heated front seats with armrests and seatback pockets; 6-way adjustable driver's seat; 4-way adjustable front passenger seat	S	—	—
				SofTex [®] -trimmed heated front seats with armrests and seatback pockets; 8-way power-adjustable driver's seat with power lumbar support; 4-way adjustable front passenger seat	—	S	S
				Smart Key System ²⁰ on driver's door with Push Button Start	S	—	—
				Smart Key System ²⁰ on three doors with Push Button Start and remote illuminated entry	—	S	S
				Power windows with auto up/down	S	S	S
				Dual sun visors with illuminated vanity mirrors	S	S	S
				Power door locks	S	S	S
				Auto-dimming rearview mirror with HomeLink ^{®21} universal transceiver	—	—	S
				Rear center console with armrest, storage compartment and two rear cup/bottle holders	S	S	S
				Qi-compatible wireless smartphone charging ²² with charge indicator light	—	S	S
				Cargo area lightweight tonneau cover	S	S	—
				Cargo area heavy sliding tonneau cover	—	—	S
				One front and one rear 12V auxiliary power outlets	S	S	S
				One front USB power outlet ⁶	S	S	S
				Rear dome light	S	S	S
				Cargo area light	S	S	S
				Front door storage pockets with sculpted bottle holders; rear door storage bottle holders	S	S	S
				Foot pedal parking brake	S	S	S
				Charging cable for standard outlet ²³	S	S	S

See numbered footnotes in Disclosures section.

S = Standard — = Not available

FEATURES (continued)

SAFETY/CONVENIENCE

	PLUS	PREMIUM	ADVANCED		PLUS	PREMIUM	ADVANCED
 Star Safety System™ — includes Enhanced Vehicle Stability Control (VSC) ²⁴ Traction Control (TRAC), Anti-lock Brake System (ABS), Electronic Brake-force Distribution (EBD), Brake Assist (BA) ²⁵ and Smart Stop Technology® (SST) ²⁶	S	S	S	Safety Connect® ¹⁶ — includes Emergency Assistance, Stolen Vehicle Locator, Roadside Assistance and Automatic Collision Notification. Available by subscription. (Complimentary 3-year trial subscription). See toyota.com/safety-connect for details.	—	—	S
Driver and front passenger Advanced Airbag System ²⁷	S	S	S	Color Head-Up Display (HUD) with speedometer, navigation, Hybrid System Indicator, battery charge, and Toyota Safety Sense™ P (TSS-P) ²⁸ alerts	—	—	S
Driver and front passenger front seat-mounted side airbags, passenger seat cushion airbag, driver's knee airbag, and front and rear curtain shield airbags ²⁷	S	S	S	Intelligent Clearance Sonar (ICS) ³⁶ with Intelligent Parking Assist (IPA) ³⁷	—	—	S
Toyota Safety Sense™ P (TSS-P) ²⁸ — Pre-Collision System ²⁹ with Pedestrian Detection ³⁰ (PCS w/PD), Lane Departure Alert with Steering Assist (LDA w/SA) ³¹ Automatic High Beams ³² and Full-Speed Range Dynamic Radar Cruise Control (DRCC) ³³	S	S	S	Hill Start Assist Control (HAC) ³⁸	S	S	S
LATCH (Lower Anchors and Tethers for CHildren) includes lower anchors on rear seats	S	S	S	Blind Spot Monitor (BSM) ³⁹ and Rear Cross-Traffic Alert (RCTA) ⁴⁰	—	—	S
Tire Pressure Monitor System (TPMS) ³⁴	S	S	S	Engine immobilizer ⁴¹	S	S	S
Vehicle Proximity Notification System (VPNS) ³⁵	S	S	S	Tire Repair System	S	S	S
				Additional year of roadside assistance, ⁴² for a total of 3 years of roadside assistance from date of purchase	S	S	S

S = Standard — = Not available

SPECIFICATIONS

MECHANICAL/PERFORMANCE

	PLUS	PREMIUM	ADVANCED
POWER OUTPUT			
Hybrid system net power: 121 hp (90 kW)	Standard	Standard	Standard
ENGINE			
1.8-Liter 4-cylinder Aluminum DOHC 16-Valve with Variable Valve Timing with intelligence (VVT-i), EV ¹⁹ /ECO/POWER Modes; 95 hp @ 5200 rpm (71 kW @ 5200 rpm), 105 lb.-ft. @ 3600 rpm (142 N•m @ 3600 rpm)	Standard	Standard	Standard
Compression ratio: 13.0:1	Standard	Standard	Standard
Induction system: Sequential multi-point EFI with Electronic Throttle Control System with intelligence (ETCS-i)	Standard	Standard	Standard
EMISSION RATING			
SULEV30 ⁴³ with Transitional Zero Emission Vehicle (TZEV) ⁴⁴	Standard	Standard	Standard
ELECTRIC MOTOR			
Motor type: Permanent magnet AC synchronous motor	Standard	Standard	Standard
Voltage: 600V maximum	Standard	Standard	Standard
TRACTION BATTERY			
Type: Lithium-ion (Li-ion)	Standard	Standard	Standard
Voltage: 351.5V	Standard	Standard	Standard
Battery capacity (kWh)	8.8	8.8	8.8
Battery weight (lb.)	265	265	265
TRANSMISSION			
Electronically controlled Continuously Variable Transmission (ECVT)	Standard	Standard	Standard
DRIVETRAIN			
Front-Wheel Drive	Standard	Standard	Standard
SUSPENSION			
Independent MacPherson strut front suspension and double-wishbone rear suspension with front and rear stabilizer bars	Standard	Standard	Standard
STEERING			
Electric Power Steering (EPS); power-assisted rack-and-pinion	Standard	Standard	Standard
Steering: Turning circle diameter, curb to curb (ft.)	33.4	33.4	33.4
BRAKES			
Power-assisted ventilated front disc brakes; solid rear disc with integrated regenerative braking and Star Safety System™	Standard	Standard	Standard

See numbered footnotes in Disclosures section.

SPECIFICATIONS (continued)

DIMENSIONS	PLUS	PREMIUM	ADVANCED
EXTERIOR (in.)			
Overall height/width/length	57.9/69.3/182.9	57.9/69.3/182.9	57.9/69.3/182.9
Wheelbase	106.3	106.3	106.3
Track (front/rear)	60.2/60.6	60.2/60.6	60.2/60.6
Overhang (front/rear)	38.4/38.2	38.4/38.2	38.4/38.2
Ground clearance	4.8	4.8	4.8
INTERIOR (front/rear) (in.)			
Head room	39.4/37.2	39.4/37.2	39.4/37.2
Shoulder room	54.2/53.0	54.2/53.0	54.2/53.0
Hip room	53.7/51.6	53.7/51.6	53.7/51.6
Leg room	43.2/33.4	43.2/33.4	43.2/33.4
Curb weight (lb.)	3365	3375	3375
Seating capacity	4	4	4
WEIGHTS AND CAPACITIES			
Manufacturer-estimated passenger volume (cu. ft.)	91.5	91.5	91.5
Manufacturer-estimated cargo volume (cu. ft.) ⁴⁵	19.8	19.8	19.8
Manufacturer-estimated interior volume (interior passenger volume + cargo volume) (cu. ft.) ⁴⁵	111.3	111.3	111.3
Fuel tank (gal.)	11.3	11.3	11.3
TIRES			
Size: P195/65R15	Standard	Standard	Standard
Spare: temporary repair kit	Standard	Standard	Standard
MILEAGE ESTIMATES			
EPA-estimated hybrid mode mpg (city/highway/combined) ⁴⁶	55/53/54	55/53/54	55/53/54
EPA-estimated MPGe ⁴⁷	133	133	133
EPA-estimated total driving range ⁴⁸	640 mi.	640 mi.	640 mi.
EPA-estimated EV Mode ¹⁹ driving range ⁴⁹	25 mi. (up to 84 mph)	25 mi. (up to 84 mph)	25 mi. (up to 84 mph)
BATTERY CHARGING TIME			
Standard outlet ^{23, 50} /240V (public charging) charging time (hr.:min.)	<5:30/~2:10	<5:30/~2:10	<5:30/~2:10

DISCLOSURES

1. Toyota strives to build vehicles to match customer interest and thus they typically are built with popular options and option packages. Not all options/packages are available separately and some may not be available in all regions of the country. If you would prefer a vehicle with no or different options, contact your dealer to check for current availability or the possibility of placing a special order. 2. Maximum operation duration of this system is ten minutes. System may not operate if the hybrid battery is under load or if the battery charge is low. While plugged in, this system operates using power from grid. See your *Owner's Manual* for further information. 3. Availability and accuracy of the information provided by the navigation system is dependent upon many factors. Use common sense when relying on information provided. Services and programming subject to change. Services not available in every city or roadway. Updates may be available from your dealer at an additional cost. See *Owner's Manual* for details. 4. Be sure to obey traffic regulations and maintain awareness of road and traffic conditions at all times. Apps/services vary by phone/carrier; functionality depends on many factors. Select apps use large amounts of data; you are responsible for charges. Apps and services subject to change. See toyota.com/entune for details. 5. Entune™ is a trademark of Toyota Motor Corporation. Always drive safely, obey traffic laws and focus on the road while driving. Services vary by phone/carrier. Functionality depends on many factors. Services subject to change. For enrollment and more details, see toyota.com/entune. 6. May not be compatible with all mobile phones, MP3/WMA players and like models. 7. iPod® and iPhone® are registered trademarks of Apple Inc. All rights reserved. 8. Advanced voice recognition capabilities vary by head unit. 9. Apps/services vary by phone/carrier; functionality depends on many factors. Select apps use large amounts of data; you are responsible for charges. Apps and services subject to change. See toyota.com/entune for details. 10. Concentrating on the road should always be your first priority while driving. Do not use the hands-free phone system if it will distract you. The *Bluetooth®* word mark and logos are registered trademarks owned by Bluetooth SIG, Inc. and any use of such marks by Toyota is under license. A compatible *Bluetooth®*-enabled phone must first be paired. Phone performance depends on software, coverage and carrier. 11. Always drive safely, obey traffic laws and focus on the road while driving. Siri® is available only on iPhone® 4S or later, iPad® with Retina® display, iPad mini,™ and iPod touch® (5th generation) and requires Internet access. Siri® is not available in all languages or all areas, and features vary by area. Some Siri® functionality and commands are not accessible in the vehicle. Data charges may apply. See apple.com and phone carrier for details. Siri® is a registered trademark of Apple Inc. 12. Be sure to obey traffic regulations and maintain awareness of road and traffic conditions at all times. HD Radio™ Technology manufactured under license from iBiquity Digital Corporation U.S. and Foreign Patents. HD Radio,™ and the HD, HD Radio, and “Arc” logos are proprietary trademarks of iBiquity Digital Corp. 13. SiriusXM services require a subscription after 3-month trial period. **Subscriptions governed by SiriusXM Customer Agreement available at www.siriusxm.com. If you decide to continue your SiriusXM™ service at the end of your complimentary trial, the plan you choose will automatically renew and bill at then-current rates until you call 1-866-635-2349 to cancel.** Fees and programming subject to change. Available only to those at least 18 years of age in the 48 contiguous United States and D.C. 14. The backup camera does not provide a comprehensive view of the rear area of the vehicle. You should also look around outside your vehicle and use your mirrors to confirm rearward clearance. Environmental conditions may limit effectiveness and view may become obscured. See *Owner's Manual* for details. 15. Requires active subscription to Safety Connect® and download of Entune® App Suite app to compatible smartphone. 16. Contact with the Safety Connect® response center is dependent upon the telematics device being in operative condition, cellular connection availability, navigation map data and GPS satellite signal reception, which can limit the ability to reach the response center or receive emergency service support. Enrollment and Telematics Subscription Service Agreement required. A variety of subscription terms is available; charges vary by subscription term selected. 17. PANDORA®, the PANDORA® logo, and the Pandora trade dress are trademarks or registered trademarks of Pandora Media, Inc., used with permission. 18. Be sure to obey traffic regulations and maintain awareness of road and traffic conditions at all times. Effectiveness depends on many factors. Depending on the conditions of roads, vehicles, weather, etc., Predictive Efficient Drive may not work as intended. See *Owner's Manual* for details. 19. CAUTION! When driving a hybrid vehicle, pay special attention to the area around the vehicle. Because there is little vehicle noise in EV Mode, pedestrians, people riding bicycles or other people and vehicles in the area may not be aware of the vehicle starting off or approaching them, so take extra care while driving. Prime's EV Mode has an EPA-estimated driving range of 25 miles, allowing it to work under certain conditions at full highway speeds. EV Mode range will vary and is dependent upon many factors, including charging practice, driving style, road/traffic conditions, outside temperature, air conditioning control levels, payload/cargo weight, proper tire pressure, vehicle maintenance and battery age. Battery capacity will decrease with time and use. See *Owner's Manual* for details. 20. The Smart Key System may interfere with some pacemakers or cardiac defibrillators. If you have one of these medical devices, please talk to your doctor to see if you should deactivate this system. 21. HomeLink® and the HomeLink® house icon are registered trademarks of Gentex Corporation. 22. Qi wireless charging may not be compatible with all mobile phones, MP3/WMA players and like models. When using the wireless charging system, avoid placing metal objects between the wireless charger and the mobile device when charging is active. Doing so may cause metal objects to become hot and could cause burns. To prevent damage to devices, do not leave the devices in the vehicle. Temperature inside may become high, resulting in damage to the device. 23. A heavier-duty wall receptacle with GFCI (Ground-Fault Circuit Interrupter) and a dedicated circuit are recommended but not required. 24. Vehicle Stability Control is an electronic system designed to help the driver maintain vehicle control under adverse conditions. It is not a substitute for safe driving practices. Factors including speed, road conditions and driver steering input can all affect whether VSC will be effective in preventing a loss of control. See *Owner's Manual* for details. 25. Brake Assist is designed to help the driver take full advantage of the benefits of ABS. It is not a substitute for safe driving practices. Braking effectiveness also depends on proper brake-system maintenance and tire and road conditions. See *Owner's Manual* for details. 26. Smart Stop Technology® operates only in the event of certain contemporaneous brake and accelerator pedal applications. When engaged, the system will reduce power to help the brakes bring the vehicle to a stop. Factors including speed, road conditions and driver input can all impact stopping distance. Smart Stop Technology® is not a substitute for safe and attentive driving and does not guarantee instant stopping. See *Owner's Manual* for details. 27. All the airbag systems are Supplemental Restraint Systems. All airbags (if installed) are designed to inflate only under certain conditions and in certain types of severe collisions: typically, frontal and knee airbags inflate in frontal collisions, side torso and side curtain airbags inflate in side collisions and roll-sensing curtain airbags inflate at a severe roll angle or roll rate. To decrease the risk of injury from an inflating airbag, always wear seatbelts, sit upright in the middle of the seat as far back as possible and do not lean against the door. Do not put objects in front of an airbag or around the seatback. Do not use a rearward-facing child seat in any front passenger seat. The force of an inflating airbag may cause serious injury or death. See your *Owner's Manual* for further information/warnings. 28. Drivers should always be responsible for their own safe driving. Please always pay attention to your surroundings and drive safely. Depending on the conditions of roads, vehicles, weather, etc., the system(s) may not work as intended. See *Owner's Manual* for details. 29. The TSS Pre-Collision System is designed to help avoid or reduce the crash speed and damage in certain frontal collisions only. It is not a substitute for safe and attentive driving. System effectiveness depends on many factors, such as speed, driver input and road conditions. See *Owner's Manual* for details. 30. The Pedestrian Detection system is designed to detect a pedestrian ahead of the vehicle, determine if impact is imminent and help reduce impact speed. It is not a substitute for safe and attentive driving. System effectiveness depends on many factors, such as speed, size and position of pedestrians, driver input and weather, light and road conditions. See *Owner's Manual* for details. 31. Lane Departure Alert with Steering Assist is designed to read lane markers under certain conditions. It provides a visual and audible alert and slight steering force when lane departure is detected. It is not a collision-avoidance system or a substitute for safe and attentive driving. Effectiveness depends on many factors. See *Owner's Manual* for details. 32. Automatic High Beams operate at speeds above 25 mph. Factors such as a dirty windshield, weather, lighting and terrain limit effectiveness, requiring the driver to manually operate the high beams. See *Owner's Manual* for details. 33. Full-Speed Range Dynamic Radar Cruise Control is designed to assist the driver and is not a substitute for safe and attentive driving practices. System effectiveness depends on many factors, such as weather, traffic and road conditions. See *Owner's Manual* for details. 34. The Toyota Tire Pressure Monitor alerts the driver when tire pressure is critically low. For optimal tire wear and performance, tire pressure should be checked regularly with a gauge; do not rely solely on the monitor system. See *Owner's Manual* for details. 35. This device is not a substitute for safe driving practices. It is the driver's responsibility to maintain a lookout for pedestrians, cyclists, other cars and objects and to drive the vehicle in a safe and prudent manner to avoid making contact. 36. Intelligent Clearance Sonar (ICS) is designed to assist drivers in avoiding potential collisions at speeds of 9 mph or less. Certain vehicle and environmental factors, including an object's shape and composition, may affect the ability of the ICS to detect it. Always look around outside the vehicle and use mirrors to confirm clearance. See *Owner's Manual* for details. 37. The Intelligent Parking Assist system requires driver brake control. Always look around outside the vehicle and use mirrors to confirm clearance. 38. Hill Start Assist Control is designed to help minimize backward rolling on steep ascents. It is not a substitute for safe driving judgment and practices. Factors including grade, surface conditions and driver input can all affect whether HAC will be effective in preventing a loss of control. See *Owner's Manual* for details. 39. Do not rely exclusively on the Blind Spot Monitor. Always look over your shoulder and use your turn signal. There are limitations to the function, detection, range and clarity of the monitor. See *Owner's Manual* for details. 40. Do not rely exclusively on the Rear Cross-Traffic Alert system. Always look over your shoulder and use your mirrors to confirm rear clearance. There are limitations to the function, detection, range and clarity of the system. See *Owner's Manual* for details. 41. The engine immobilizer is a state-of-the-art anti-theft system. When you insert your key into the ignition switch or bring a Smart Key fob into the vehicle, the key transmits an electronic code to the vehicle. The engine will only start if the code in the transponder chip inside the key/fob matches the code in the vehicle's immobilizer. Because the transponder chip is embedded in the key/fob, it can be costly to replace. If you lose a key or fob, your Toyota dealer can help, or you can find a qualified independent locksmith to perform high-security key services by consulting your local Yellow Pages or by contacting www.aloa.org. 42. An additional year of roadside assistance is included, for a total of 3 years from date of first use. Does not include parts and fluids. Valid only in the continental U.S. and Alaska. 43. Meets Tier 2/Bin 3 Federal emissions standard. 44. Emissions ratings vary by state. For more information on TZEVI, please see www.arb.ca.gov. 45. Cargo and load capacity limited by weight and distribution. 46. 2017 Prius Prime EPA-estimated mpg. Actual mpg will vary based on driving habits, weather, temperature and road/traffic conditions. For more information on mpg, please see www.fueleconomy.gov. 47. 2017 Prius Prime EPA-estimated MPGe. Actual MPGe will vary and is dependent upon many factors, including charging practice, driving style, road/traffic conditions, outside temperature, air conditioning control levels, payload/cargo weight, proper tire pressure, vehicle maintenance, battery age and changes in energy costs. Battery capacity will decrease with time and use. For more information on MPGe and range, please see www.fueleconomy.gov. 48. 2017 Prius Prime EPA-estimated range rating when fully charged and with a full tank of gas. Excludes driving conditions. Actual mileage will vary. 49. Calculations based on 2017 Prius Prime EPA-estimated EV Mode range of 25 miles when vehicle is fully charged. Excludes driving conditions. Actual mileage traveled in EV Mode will vary and is dependent on many factors such as traffic, road and weather conditions, vehicle maintenance, driving

DISCLOSURES (continued)

speed and cargo load. **50.** Charge time is for standard 120V outlet. Always plug-in in accordance with *Owner's Manual*. **51.** Based on fueleconomy.gov non-luxury plug-in hybrids, as of September 2016. Actual mileage will vary. **52.** Based on manufacturers' data, as of August 2016, for cargo area behind second-row seats, 19.8 cu. ft. from fueleconomy.gov non-luxury plug-in hybrids. **53.** EV Auto Mode requires some level of charge to activate EV Mode driving, and will trigger the engine as the battery drains, especially when accelerating. There are limited driving conditions—largely due to climate and temperature—that may require EV Auto Mode to turn off. See *Owner's Manual* for details. **54.** Extra-cost color. **55.** This floor mat was designed specifically for use in your model and model year vehicle and SHOULD NOT be used in any other vehicle. To avoid potential interference with pedal operation, each mat must be secured with its fasteners. Do not install a floor mat on top of an existing floor mat. **56.** The Toyota Genuine Accessory Warranty will only apply when the installation is performed by a trained Toyota-approved installer. Please see dealer for details.

CARS BUILT FOR THE WAY YOU LIVE

At Toyota, we build cars for how you live. From building advanced safety features designed to help prevent crashes to driving cross-country to understand how we can make your driving experience better, our work starts with understanding your needs. Building cars for how you live also means thinking about tomorrow — from fuel efficiency and environmental innovations, to things beyond cars, like a bicycle that you can control with your mind. And because what we learn building cars can help improve lives in other places, we do things like help communities rebuild their homes quickly after a disaster and work with soup kitchens to help them serve more people faster. Toyota. Built for how you live. Together we are going places.

WARRANTIES

Every Toyota Car, Truck and SUV is built to exceptional standards. And that's not idle boasting. We back it up with these Limited Warranty Coverages:

Basic: 36 months/36,000 miles (all components other than normal wear and maintenance items).

Hybrid-Related Component Coverage: Hybrid-related components, including the HV battery, battery control module, hybrid control module and inverter with converter, are covered for 8 years/100,000 miles. The HV battery may have longer coverage under emissions warranty. Refer to applicable *Warranty and Maintenance Guide* for details.

Powertrain: 60 months/60,000 miles (engine, transmission/transaxle, drive system, seatbelts and airbags).

Rust-Through: 60 months/unlimited miles (corrosion perforation of sheet metal).

Emissions: Coverages vary under Federal and California regulations. Refer to applicable *Warranty and Maintenance Guide* for details.

Toyota strives to build vehicles to match customer interest and thus they typically are built with popular options and option packages. Not all options/packages are available separately and some may not be available in all regions of the country. See toyota.com for information about options/packages commonly available in your area. If you would prefer a vehicle without any or with different options, contact your dealer to check for current availability or the possibility of placing a special order.

Accessories: For Genuine Toyota Accessories purchased at the time of the new vehicle purchase, the Toyota Accessory Warranty coverage is in effect for 36 months/36,000 miles from the vehicle's in-service date, which is the same coverage as the Toyota New Vehicle Limited Warranty.

For Genuine Toyota Accessories purchased after the new vehicle purchase the coverage is 12 months, regardless of mileage, from the date the accessory was installed on the vehicle, or the remainder of any applicable new vehicle warranty, whichever provides greater coverage.

You may be eligible for transportation assistance if it's necessary that your vehicle be kept overnight for repairs covered under warranty. Please see your authorized Toyota dealership for further details.

For complete details about Toyota's warranties, please visit www.toyota.com, refer to the applicable *Warranty and Maintenance Guide* or see your Toyota dealer.

Some vehicles are shown with available equipment. Seatbelts should be worn at all times. For details on vehicle specifications, standard features and available equipment in your area, contact your Toyota dealer. A vehicle with particular equipment may not be available at the dealership. Ask your Toyota dealer to help locate a specifically equipped vehicle.

All information presented herein is based on data available at the time of posting, is subject to change without notice and pertains specifically to mainland U.S.A. vehicles only. Prototypes shown. Actual production vehicles may vary.



For Toyota Mobility program details, go to www.toyota.com/mobility or call the Toyota Customer Assistance Center at 1-800-331-4331