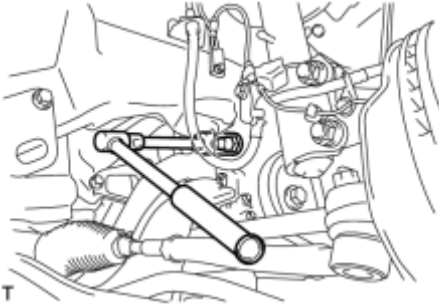


# REMOVAL

1. REMOVE FRONT WHEEL RH

2. REMOVE ENGINE OIL PRESSURE SWITCH ASSEMBLY

(a) Disconnect the oil pressure switch connector.



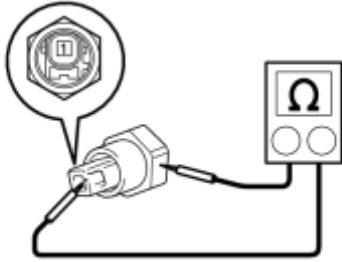
(b) Using a 24 mm deep socket wrench, remove the oil pressure switch.

# INSPECTION

## 1. INSPECT ENGINE OIL PRESSURE SWITCH ASSEMBLY

(a) Disconnect the oil pressure switch connector.

(b) Start the engine.



(c) Measure the resistance according to the value(s) in the table below.

Standard Resistance:

Tester Connection	Condition	Specified Condition
1 - Switch body	Idling	10 k $\Omega$ or higher
1 - Switch body	Engine stopped	Below 1 $\Omega$

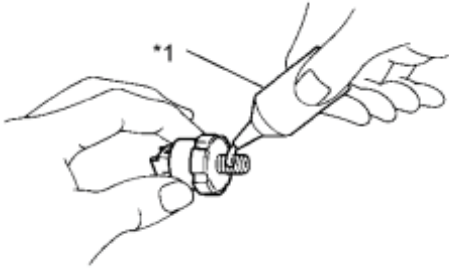
If the result is not as specified, replace the oil pressure switch assembly.

(d) Reconnect the oil pressure switch connector.

# INSTALLATION

## 1. INSTALL ENGINE OIL PRESSURE SWITCH ASSEMBLY

(a) Apply adhesive to 2 or 3 threads of the oil pressure switch.



### Text in Illustration

*1	Adhesive
----	----------

Adhesive:

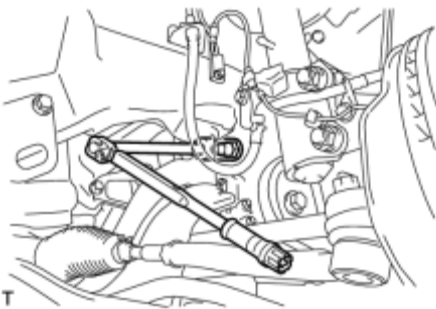
Toyota Genuine Adhesive 1344, Three Bond 1344 or equivalent

(b) Using a 24 mm deep socket wrench, install the oil pressure switch.

Torque: **15 N·m (153 kgf·cm, 11ft·lbf)**

NOTICE:

Do not start the engine for at least 1 hour after installation.



(c) Connect the oil pressure switch connector.

2. INSPECT FOR ENGINE OIL LEAK\_ NFC

3. INSTALL FRONT WHEEL RH

Torque: **103 N·m (1050 kgf·cm, 76ft·lbf)**