

F 19 Z F A B 0004 A
 1 2 3 4 5 6

1. Model: F => Prius
2. Date: 1 to 31
3. Month: 1 to 9, X (10), Y (11), Z (12)
4. Year: D (2000), E (2001), F (2002), G (2003)
5. Supplier of Prius ECU: A => Denso ECU, B => Panasonic ECU
6. Serial No.: Sequence number starting from 0001

Subject: How to Identify Modified HV Batteries

Market
USA

Vehicle Interior

Meter/Gauge/Display

Applicability
All HV Vehicles

APPLICABLE VEHICLES

2001-2016	Prius	2013-2016	Avalon HV
2010, 2012-2015	Prius PHV	2012-2016	Prius V
2012-2016	Prius C	2007-2016	Camry HV

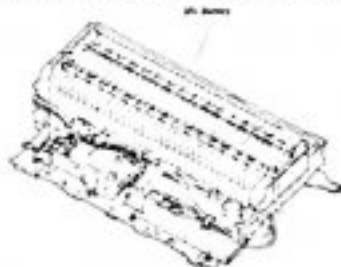
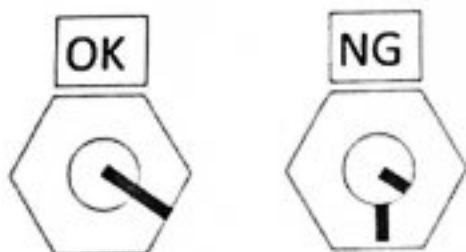
CONDITION

A vehicle may arrive to the dealer with a MIL "ON" condition and P0A80 stored in the memory. Some cases have been identified with internal modification done to the HV Battery. Modified or altered parts are not covered under warranty.

RECOMMENDATIONS

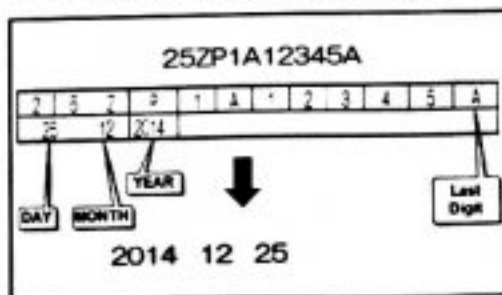
Please use the following procedure (s)

- For vehicles produced up to September 2008
 - Remove cover and check bus bar nut and bolt for offset mark



- For vehicles produced after September 2008
 - Remove HV Battery cover and inspect cells for physical signs of modification
 - Signs of previous removal of cover and or bus bar
 - Check that the last digit of the serial #s of all cell match (either A or B)
 - Check all cell serial #s and make sure they are all within 3 months of production date from each other

Cell serial # example



MONTH	
1	1
2	2
3	3
4	4
5	5
6	6
7	7
8	8
9	9
X	10
Y	11
Z	12

YEAR	
A	1999
B	2000
C	2001
D	2002
E	2003
F	2004
G	2005
H	2006
I	2007
J	2008
K	2009
L	2010
M	2011
N	2012
O	2013
P	2014
Q	2015

LINK REFERENCES

This Tech Tip does not contain any link references