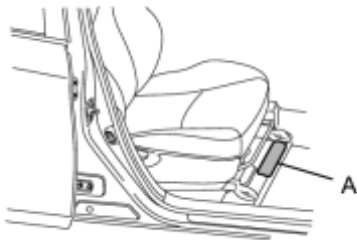


# VEHICLE IDENTIFICATION AND SERIAL NUMBERS

## 1. VEHICLE IDENTIFICATION NUMBER



(a) The vehicle identification number is stamped on the vehicle body and on the certification label as shown in the illustration.

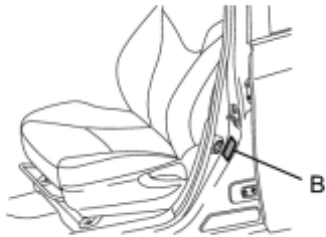


A:

Vehicle Identification Number

B:

Certification Label



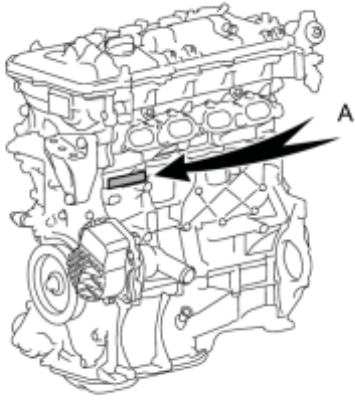
c

## 2. ENGINE SERIAL NUMBER AND TRANSAXLE SERIAL NUMBER

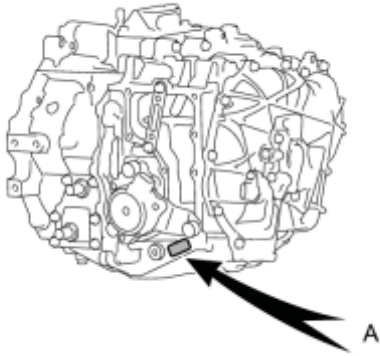
(a) The engine serial number is stamped on the cylinder block of the engine as shown in the illustration.

A:

2ZR-FXE Engine Serial Number



c



c

(b) The transaxle code is stamped on the case as shown in the illustration.

A:

P410 Transaxle Code