

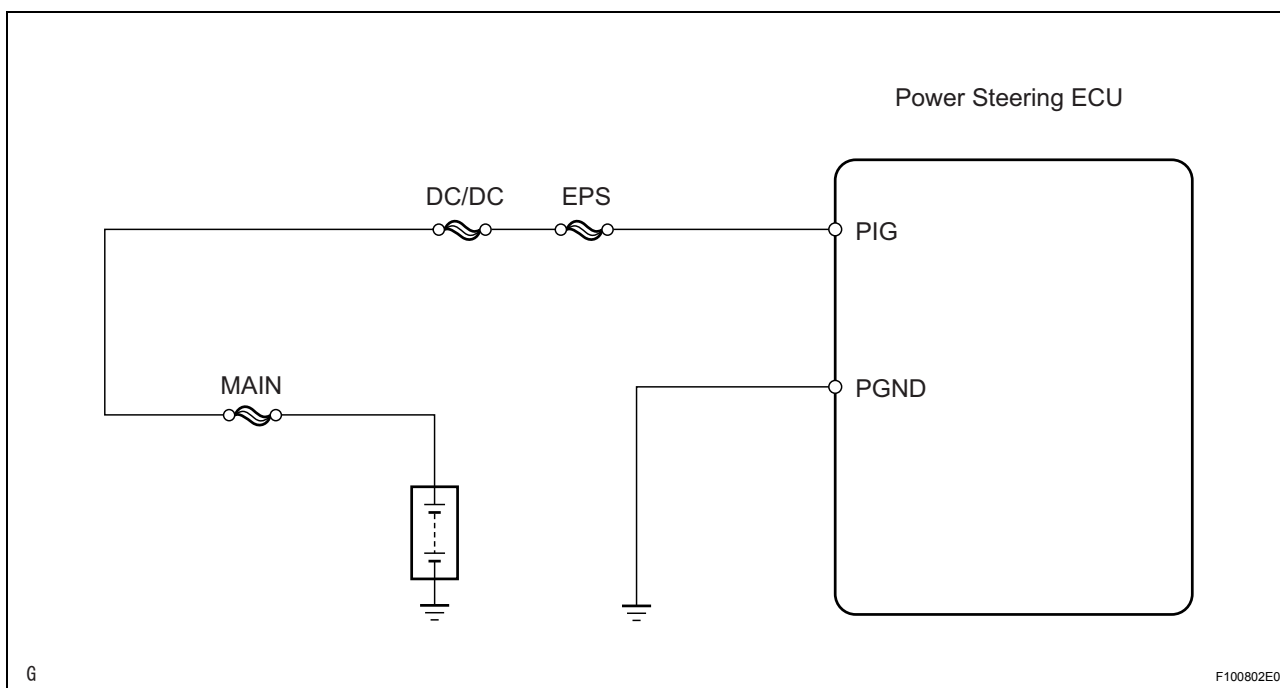
DTC	C1552	PIG Power Supply Voltage Malfunction
DTC	C1554	Power Supply Relay Failure
DTC	C1555	Motor Relay Welding Failure

DESCRIPTION

When a problem occurs in the system, the power source relay (built into the power steering ECU) circuit and the motor relay (built into the power steering ECU) circuit are shut off to stop power assist. It is necessary to replace the ECU when there is a problem in the relay because each relay is built into the ECU.

DTC No.	DTC Detection Condition	Trouble Area
C1552	PIG power source voltage error	<ul style="list-style-type: none"> • EPS H-fuse • PIG power source circuit • Power steering ECU
C1554	Power source relay malfunction	<ul style="list-style-type: none"> • EPS H-fuse • PIG power source circuit • Power steering ECU
C1555	Motor relay malfunction	<ul style="list-style-type: none"> • EPS Fuse • PIG power source circuit • Power steering ECU

WIRING DIAGRAM



INSPECTION PROCEDURE

1	INSPECT FUSE (EPS)
----------	---------------------------

- (a) Remove the EPS H-fuse from the engine room junction block.

(b) Measure the resistance of the fuse.

Standard resistance:

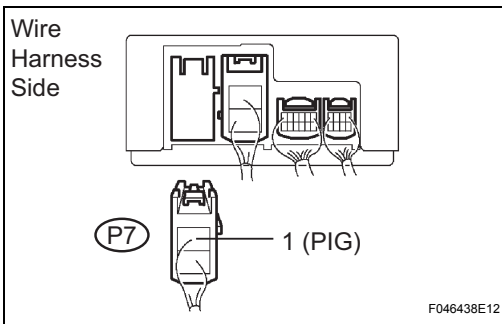
Below 1 Ω

NG

INSPECT FOR SHORT IN ALL COMPONENTS CONNECTED TO FUSE AND REPAIR OR REPLACE THEM IF NEEDED, AND REPLACE FUSE

OK

2 CHECK WIRE HARNESS (POWER STEERING ECU - BODY GROUND)



(a) Disconnect the P7 power steering ECU connector.
 (b) Measure the voltage of the wire harness side connector.
Standard voltage

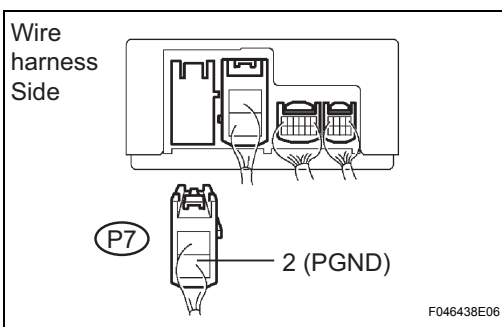
Tester Connection	Specified Condition
P7-1 (PIG) - Body ground	10 to 16 V

NG

REPAIR OR REPLACE HARNESS AND CONNECTOR

OK

3 CHECK WIRE HARNESS (POWER STEERING ECU - BODY GROUND)



(a) Disconnect the P7 power steering ECU connector.
 (b) Measure the resistance of the wire harness side connector.

Standard resistance

Tester Connection	Specified Condition
P7-2 (PGND) - Body ground	Below 1 Ω

NG

REPAIR OR REPLACE HARNESS AND CONNECTOR

OK

REPLACE POWER STEERING ECU