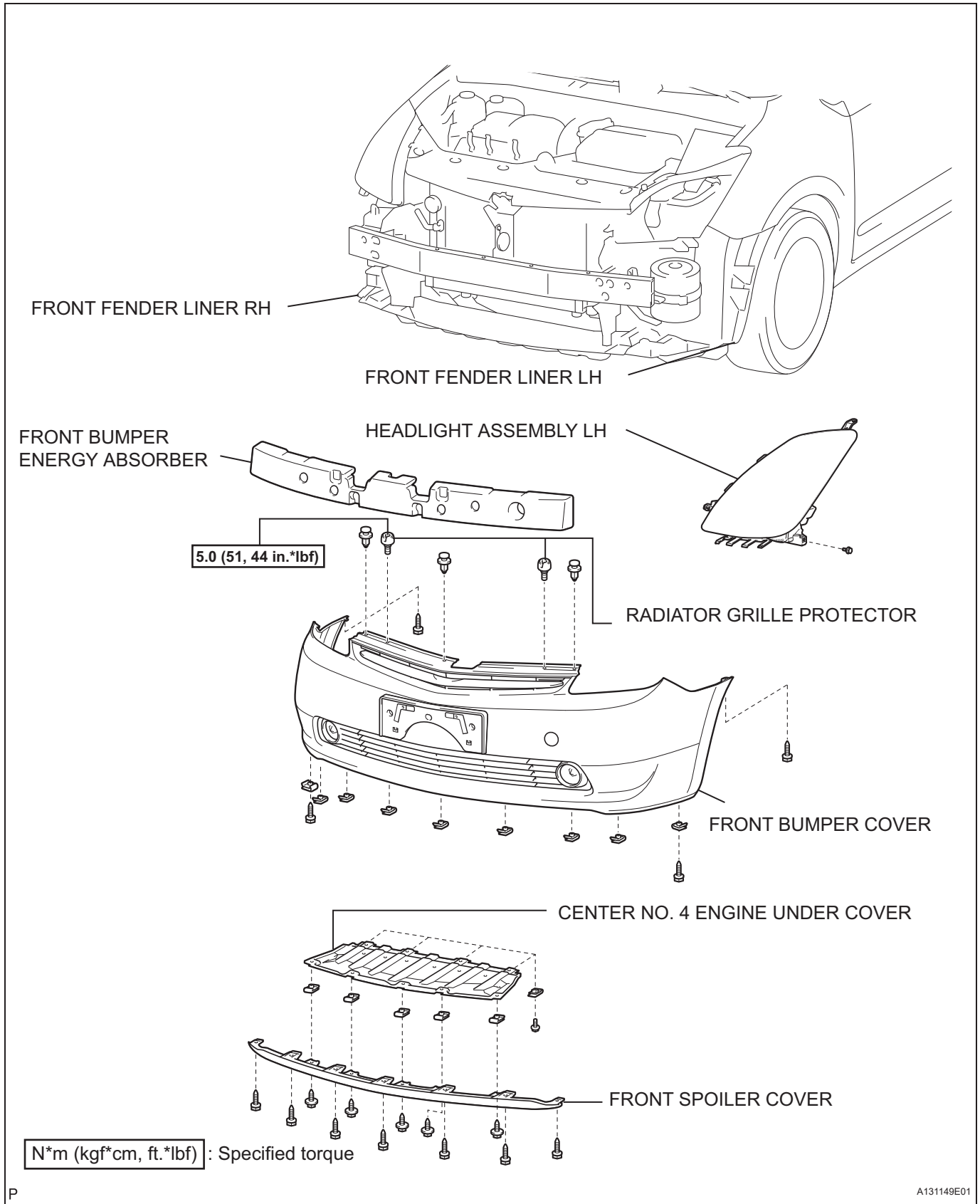
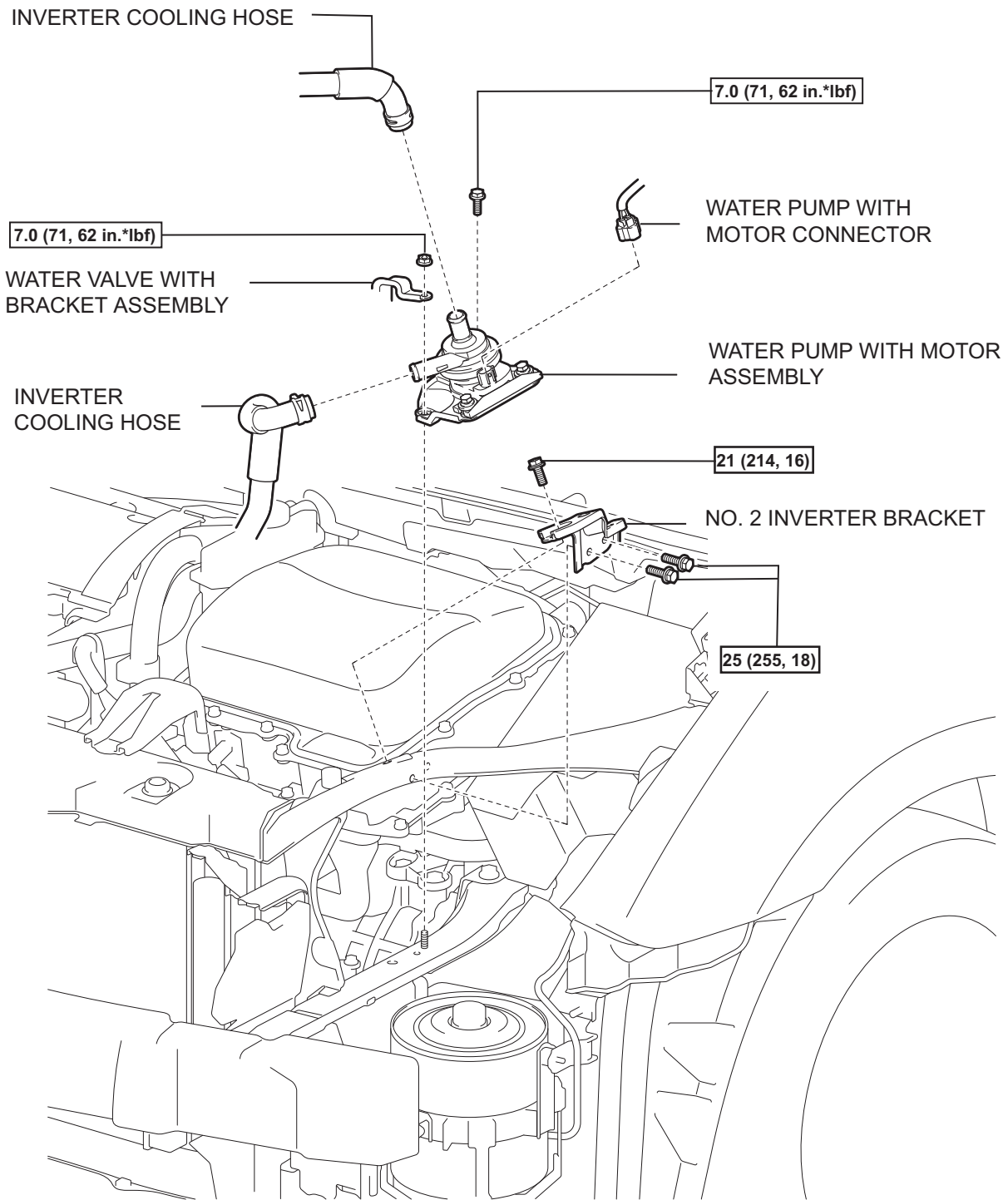


WATER PUMP WITH MOTOR

COMPONENTS



HV

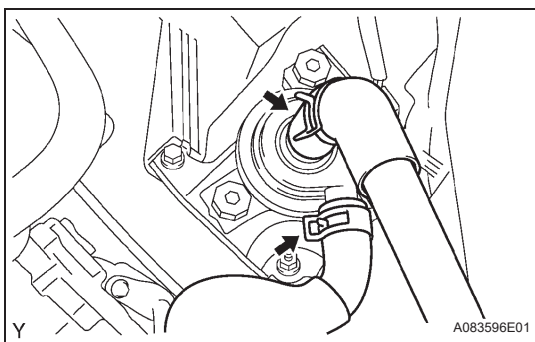
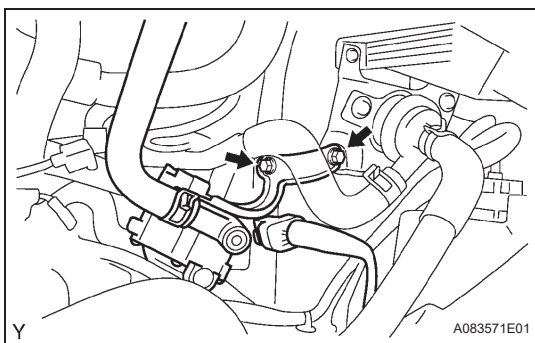


HV

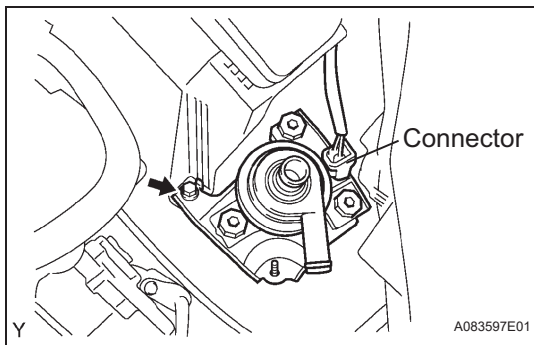
N*m (kgf*cm, ft.*lbf) : Specified torque

REMOVAL

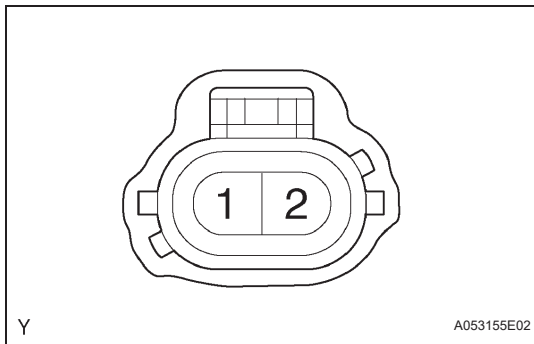
1. REMOVE REAR NO. 2 FLOOR BOARD (See page [CH-4](#))
2. REMOVE REAR DECK FLOOR BOX (See page [CH-4](#))
3. REMOVE REAR NO. 3 FLOOR BOARD (See page [CH-4](#))
4. DISCONNECT CABLE FROM NEGATIVE BATTERY TERMINAL
CAUTION:
 Wait at least 90 seconds after disconnecting the cable from the negative (-) battery terminal to prevent airbag and seat belt pretensioner activation.
5. DISCONNECT FRONT FENDER LINER LH (See page [ET-3](#))
6. DISCONNECT FRONT FENDER LINER RH (See page [ET-3](#))
7. REMOVE CENTER NO. 4 ENGINE UNDER COVER (See page [ET-3](#))
8. REMOVE FRONT SPOILER COVER (See page [ET-3](#))
9. REMOVE FRONT BUMPER COVER (See page [ET-4](#))
10. REMOVE FRONT BUMPER ENERGY ABSORBER
11. REMOVE HEADLIGHT ASSEMBLY LH
 (a) Remove the headlight LH from the vehicle (see page [LI-77](#)).
12. DRAIN HV COOLANT (See page [HX-58](#))
13. DISCONNECT WATER VALVE WITH BRACKET ASSEMBLY
 (a) Remove the bolt and nut, then disconnect the water valve.



14. REMOVE WATER PUMP WITH MOTOR ASSEMBLY
 (a) Disconnect the 2 inverter cooling hoses shown in the illustration.



- (b) Remove the bolt, then disconnect the water pump with motor assembly from the vehicle.
- (c) Disconnect the connector and remove the water pump with motor assembly.



INSPECTION

1. INSPECT WATER PUMP WITH MOTOR

- (a) Check the operation.
 - (1) Connect the battery positive terminal to terminal 1 and the battery negative terminal to terminal 2.

Specified condition:

Pump motor operates properly

NOTICE:

- Do not connect the positive and negative terminals of the battery to the wrong water pump terminals.
- Complete the check within 10 seconds of the connection.

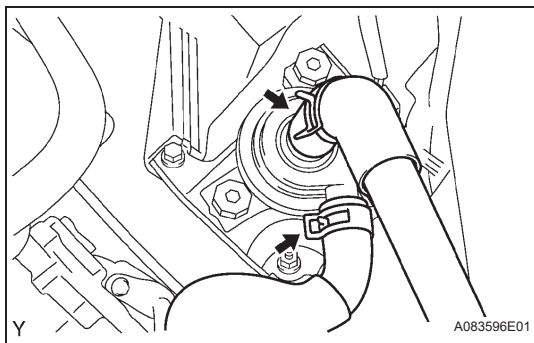
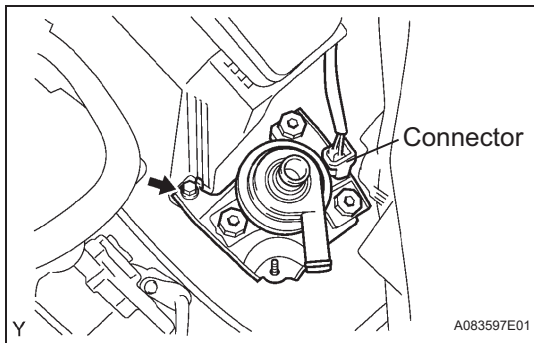
If the pump motor does not operate properly, replace the water pump with motor assembly.

INSTALLATION

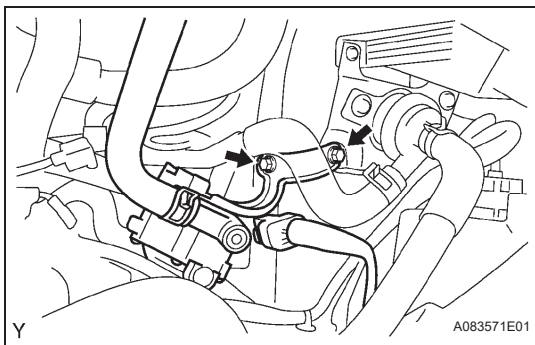
1. INSTALL WATER PUMP WITH MOTOR ASSEMBLY

- (a) Connect the connector.
- (b) Install the water pump with motor assembly with the bolt.

Torque: 7.0 N*m (71 kgf*cm, 62 in.*lbf)



- (c) Connect the 2 inverter cooling hoses.



2. **INSTALL WATER VALVE WITH BRACKET ASSEMBLY**
 - (a) Install the water valve with the bolt and nut.
Torque: 7.0 N*m (71 kgf*cm, 62 in.*lbf)
3. **INSTALL HEADLIGHT ASSEMBLY LH**
 - (a) Install the headlight LH to the vehicle (see page [LI-82](#)).
4. **INSTALL FRONT BUMPER ENERGY ABSORBER**
5. **INSTALL FRONT BUMPER COVER** (See page [ET-6](#))
6. **INSTALL FRONT SPOILER COVER** (See page [ET-7](#))
7. **INSTALL CENTER NO. 4 ENGINE UNDER COVER** (See page [ET-7](#))
8. **INSTALL FRONT FENDER LINER LH** (See page [ET-7](#))
9. **INSTALL FRONT FENDER LINER RH** (See page [ET-7](#))
10. **ADD HV COOLANT** (See page [HX-58](#))
11. **CHECK ENGINE COOLANT LEAKAGE** (See page [CO-2](#))
12. **CONNECT CABLE TO NEGATIVE BATTERY TERMINAL** (See page [CH-7](#))
13. **INSTALL REAR NO. 3 FLOOR BOARD** (See page [CH-8](#))
14. **INSTALL REAR DECK FLOOR BOX** (See page [CH-8](#))
15. **INSTALL REAR NO. 2 FLOOR BOARD** (See page [CH-8](#))
16. **PERFORM INITIALIZATION**
 - (a) Perform initialization (see page [IN-32](#)).

NOTICE:
Certain systems need to be initialized after disconnecting and reconnecting the cable from the negative (-) battery terminal.