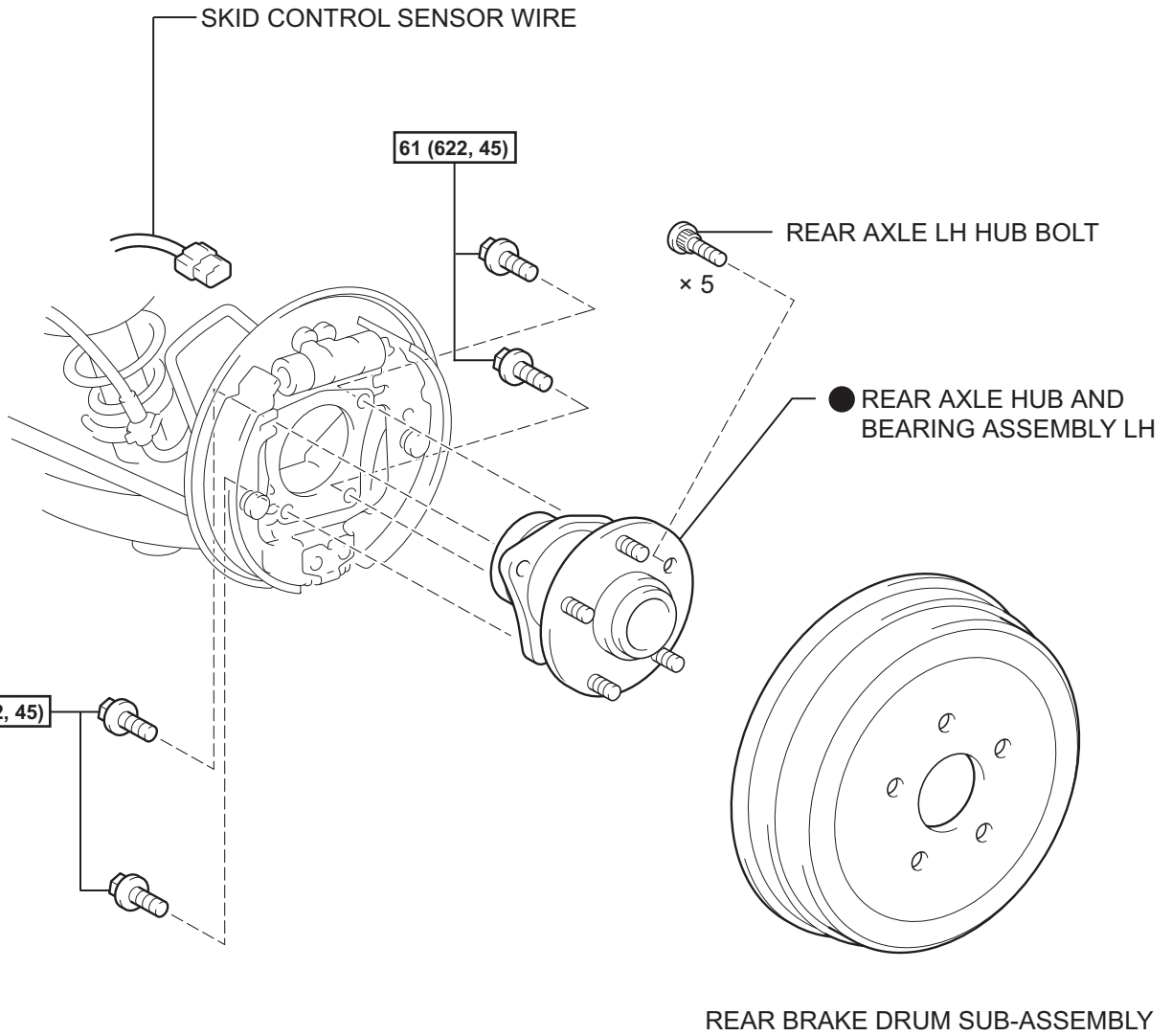


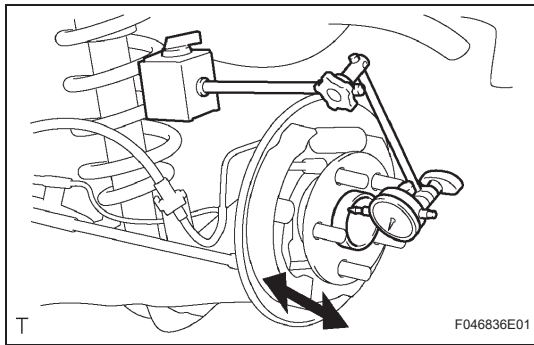
REAR AXLE HUB AND BEARING

COMPONENTS



61 (622, 45) : Specified torque

AH



ON-VEHICLE INSPECTION

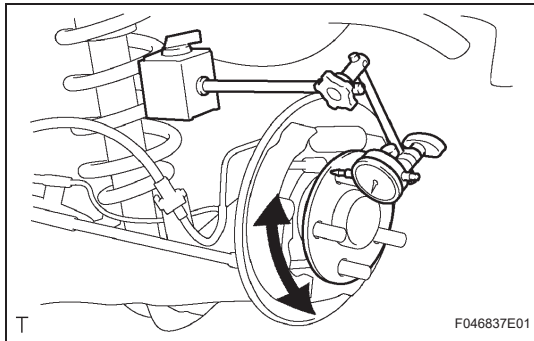
1. INSPECT REAR AXLE HUB BEARING LOOSENESS

- (a) Remove the rear wheel.
- (b) Remove the rear brake drum.
HINT:
Put matchmarks on the rear brake drum and hub bolt.
- (c) Using a dial indicator, check for looseness at the center of the axle hub.

Maximum looseness:

0.05 mm (0.0020 in.)

If the looseness exceeds the maximum, replace the axle hub.



2. INSPECT REAR AXLE HUB BEARING RUNOUT

- (a) Using a dial indicator, check for runout of the axle hub.

Maximum runout:

0.07 mm (0.0028 in.)

If the runout exceeds the maximum, replace the axle hub.

- (b) Install the rear brake drum.

HINT:

Align the matchmarks of the rear brake drum and hub bolt before installing them.

- (c) Install the rear wheel.

Torque: 103 N*m (1,050 kgf*cm, 76 ft.*lbf)

REMOVAL

HINT:

- Use the same procedures for the RH side and LH side.
- The procedures listed below are for the LH side.

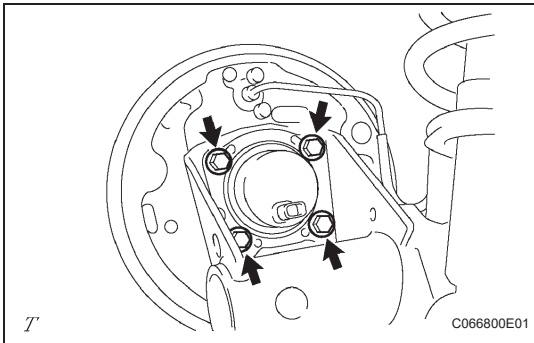
1. REMOVE REAR WHEEL
2. REMOVE REAR BRAKE DRUM SUB-ASSEMBLY
3. DISCONNECT SKID CONTROL SENSOR CONNECTOR

NOTICE:

Be careful that foreign matter does not attach to the inside of the skid control sensor connector and on the installation portion.

4. REMOVE REAR AXLE HUB AND BEARING ASSEMBLY LH

- (a) Remove the 4 bolts and then remove the axle hub and bearing.



INSTALLATION

HINT:

- Use the same procedures for the RH side and LH side.
- The procedures listed below are for the LH side.

1. INSTALL REAR AXLE HUB AND BEARING ASSEMBLY LH

- (a) Install the axle hub and bearing LH on the axle beam with the 4 bolts.

Torque: 61 N*m (622 kgf*cm, 45 ft.*lbf)

2. CONNECT SKID CONTROL SENSOR CONNECTOR

3. INSPECT REAR AXLE HUB BEARING LOOSENESS (See page [AH-10](#))

4. INSPECT REAR AXLE HUB BEARING RUNOUT (See page [AH-10](#))

5. INSTALL REAR BRAKE DRUM SUB-ASSEMBLY

6. INSTALL REAR WHEEL

Torque: 103 N*m (1,050 kgf*cm, 76 ft.*lbf)

7. INSPECT REAR WHEEL ALIGNMENT (See page [SP-10](#))

8. CHECK ABS SPEED SENSOR SIGNAL