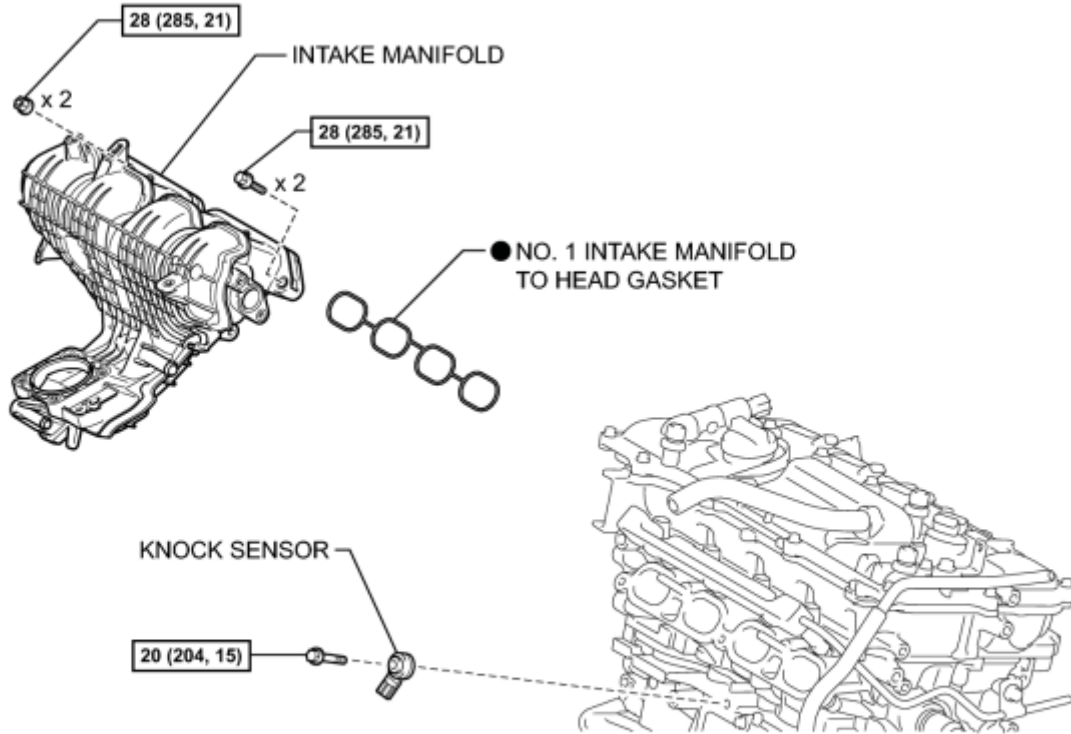


COMPONENTS

ILLUSTRATION



28 (285, 21)
20 (204, 15)
N*m (kgf*cm, ft.*lbf): Specified torque

● Non-reusable part

REMOVAL

1. REMOVE INTAKE MANIFOLD

(a) Remove the intake manifold .

2. REMOVE KNOCK SENSOR

(a) Disconnect the knock sensor connector.

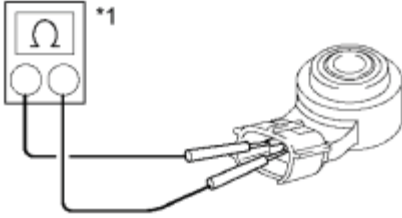


(b) Remove the bolt and remove the knock sensor.

INSPECTION

1. INSPECT KNOCK SENSOR

Text in Illustration



Y

*1	Ohmmeter
----	----------

(a) Measure the resistance according to the value(s) in the table below.

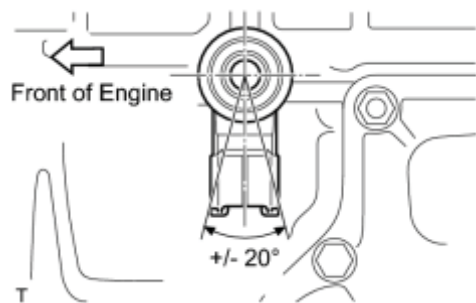
Standard Resistance:

Tester Connection	Condition	Specified Condition
1 - 2	20°C (68°F)	120 to 280 kΩ

If the result is not as specified, replace the knock sensor.

INSTALLATION

1. INSTALL KNOCK SENSOR



(a) Install the knock sensor with the bolt as shown in the illustration.

Torque: **20 N·m (204 kgf·cm, 15ft·lbf)**

NOTICE:

Make sure that the knock control sensor is in the correct position.

(b) Connect the knock sensor connector.

2. INSTALL INTAKE MANIFOLD

(a) Install the intake manifold INFO.