

The 2018 Prius Prime factory installed cargo light is too weak and locate on the side. Many times at night I can't see it clearly especially when there are items there blocking the cargo light. So I added a second set of LEDs at the back of the trunk door so that I can see things clearly. Overall project took about 1.5 hour. It could be faster if I don't need to take pictures with just one hand. Here is how it looks after installed:



I used 2 x 12V LED bulb, you may use any other 12V low profile bulbs, flat ones are even better



First, pop open the plastic lid located at the back of the trunk door by pushing some flat tool into the 2 tabs. The LED bulbs will be installed on this lid. We need to run the wires from here to the factory installed cargo light.

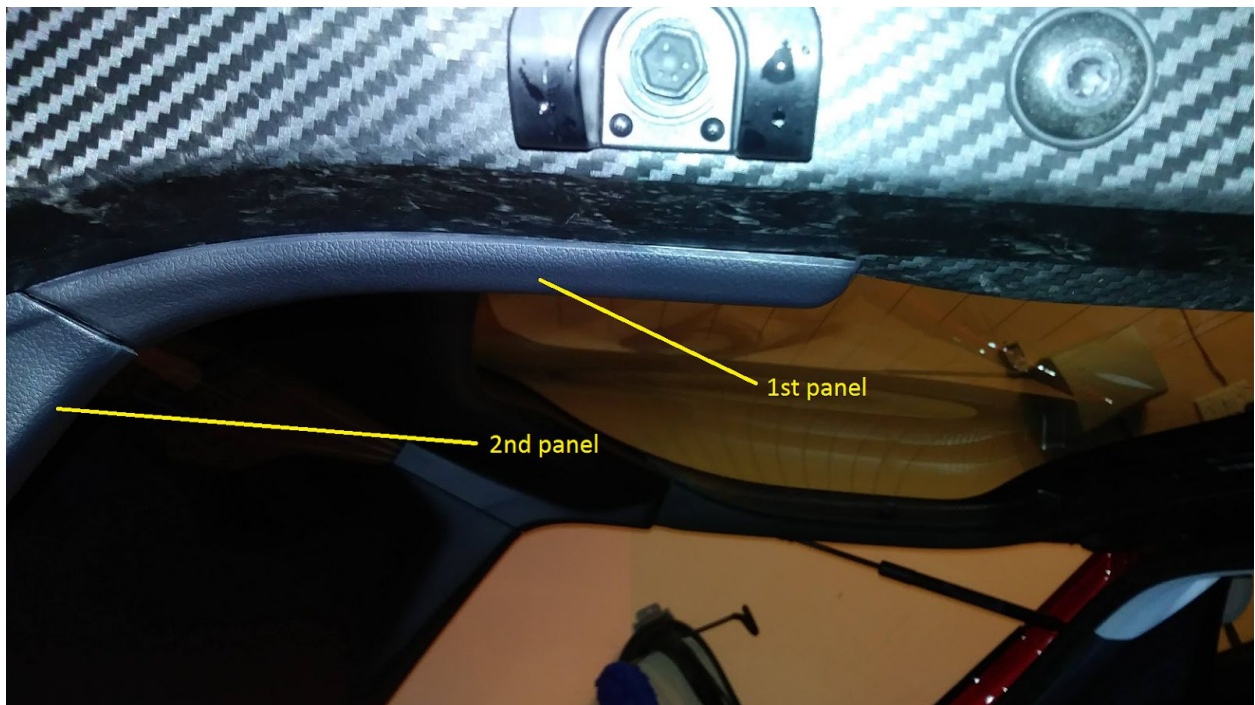




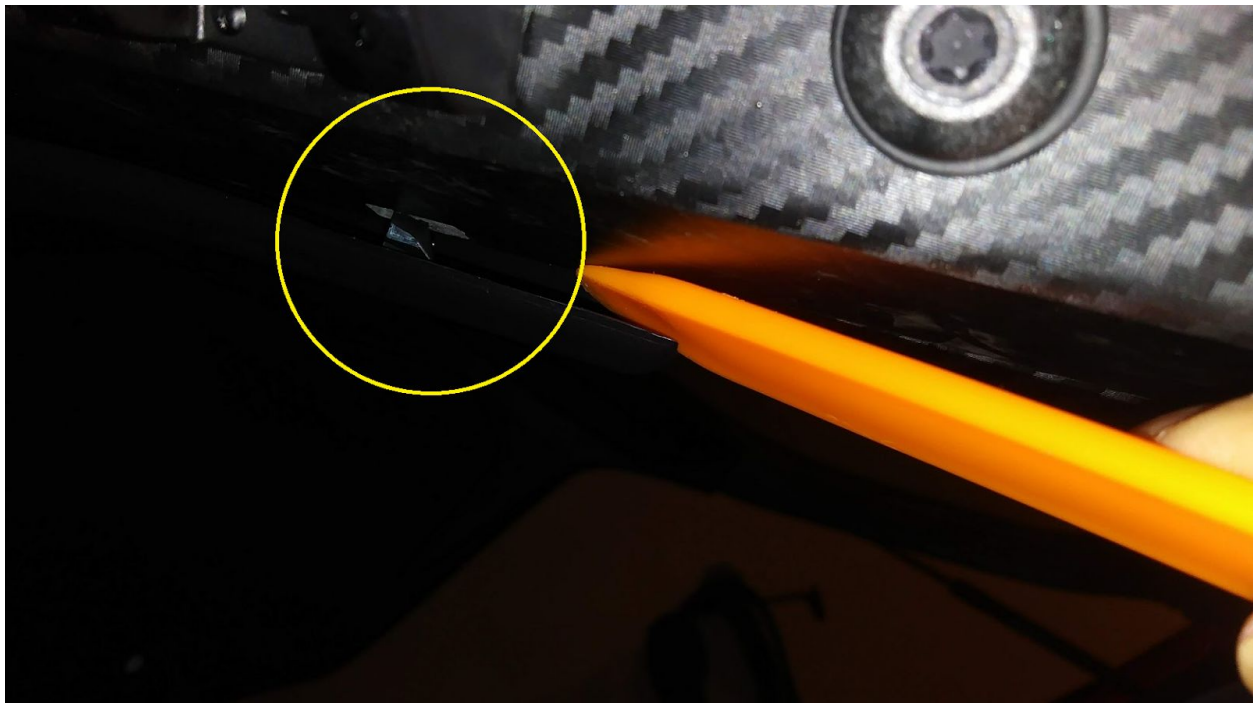
Tie a string to lower the trunk door so that you can work with it at a comfortable height:



On the left side of right side of the door, there are 2 plastic panels attached to the carbon fiber frame



Insert some flat tool to pop 1st panel open slightly, you can see there is a hook anchoring:



The 2nd panel can be opened partially to run the wires. Insert flat tool to expand the gap, the pull with some force to unlock one of the blue pin:







Now you can use some fishing wire to run the wire from the center to the side of the trunk door:







Tuck and run the wire inside the hollow space in both panel 1 & 2.



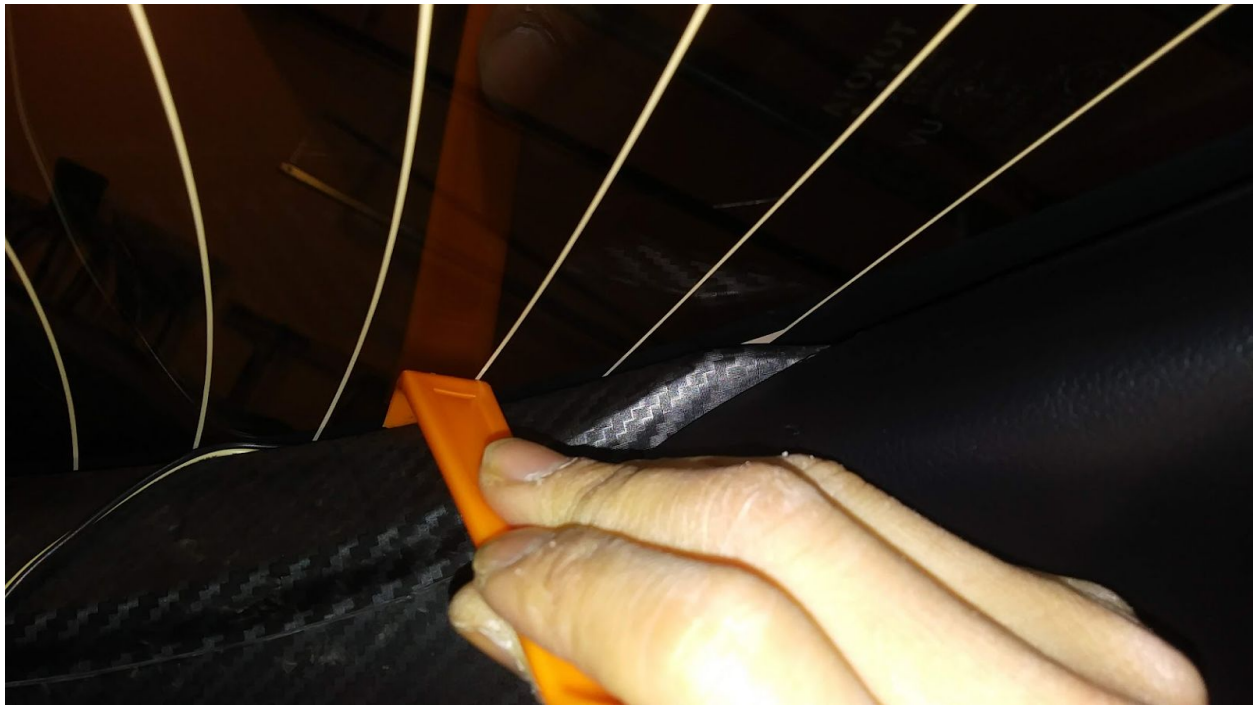
The wire should end up coming out from the top part of panel 1, we will hide the wire in between the glass and carbon fiber frame







Continue to push the wire along the edge of the glass till you reach the top of the glass. The wire should not be visible from outside. Make sure you just use plastic tools to avoid damaging the heating wires.



Now you need to open one more panel, that is on the top part inside the trunk door with 5 pins. Use both hands to pull from one end with some force, one pin at a time:



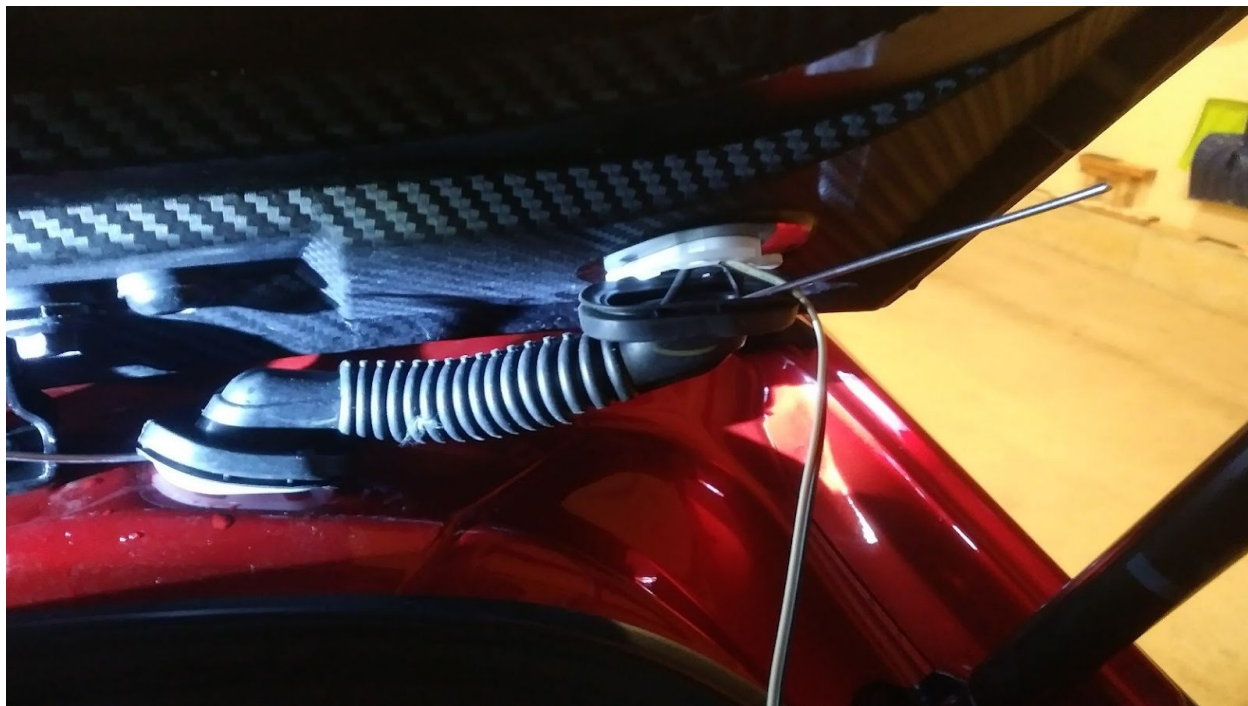


Peel open the soft plastic conduit and continue to run the wire through it:









Remove the pin from the passenger roof near the edge of the trunk, so the we can get the wire out from the conduit to the cargo area





Pop open the cargo light module by inserting flat tool on the left side of it



Pull the big rubber to expose the gap between the metal frame and interior cloth like material, continue to run the wire along the gap. Be Careful of the sticky black material, avoid touching them. Then fish the wire from that gap to the cargo light module opening. Connect the wire to your new LED light and tap the other end to the light module. You might want to disconnect the 12V battery first to avoid burning the fuse just in case if you shorted the circuit.







