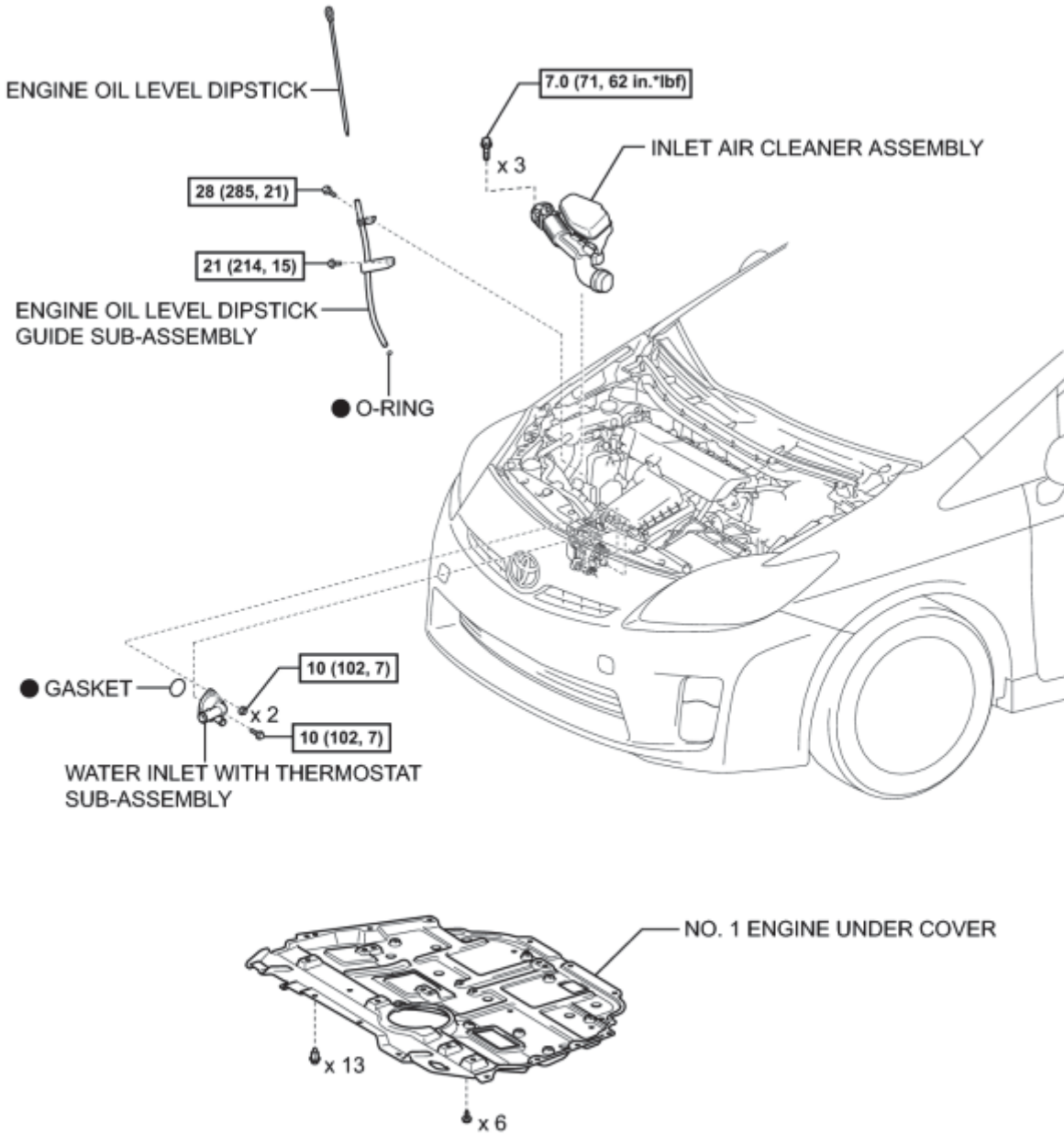


# COMPONENTS

# ILLUSTRATION



**N\*m (kgf\*cm, ft.\*lbf)**: Specified torque

● Non-reusable part

# REMOVAL

1. REMOVE NO. 1 ENGINE UNDER COVER

2. REMOVE INLET AIR CLEANER ASSEMBLY\_ INFO

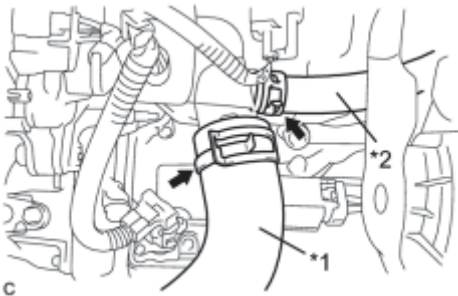
3. REMOVE ENGINE OIL LEVEL DIPSTICK GUIDE SUB-ASSEMBLY\_ INFO

4. DRAIN ENGINE COOLANT (for Engine)\_ INFO

5. REMOVE WATER INLET WITH THERMOSTAT SUB-ASSEMBLY

(a) Disconnect the No. 2 radiator hose and No. 3 water by-pass hose.

## Text in Illustration

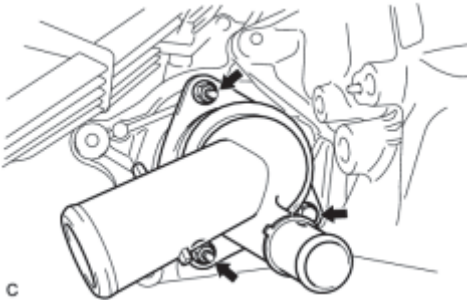


*1	No. 2 Radiator Hose
*2	No. 3 Water By-pass Hose

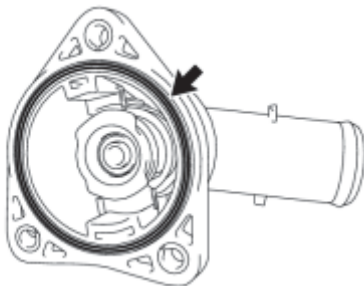
- Do not apply force to the water inlet with thermostat sub-assembly when disconnecting the No. 3 water by-pass hose.
- Do not damage the water inlet with thermostat sub-assembly.

### HINT:

When disconnecting the No. 3 water by-pass hose, pinch the hose clamp, rotate the hose and pull it straight off the pipe.



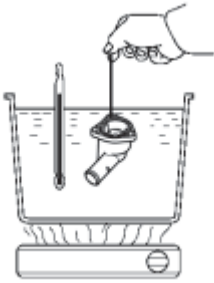
(b) Remove the 2 nuts, bolt and water inlet with thermostat sub-assembly.



(c) Remove the gasket from the water inlet with thermostat sub-assembly.

# INSPECTION

## 1. INSPECT WATER INLET WITH THERMOSTAT SUB-ASSEMBLY



Y

A75919

(a) Immerse the water inlet with thermostat sub-assembly in water and then gradually heat the water.

(b) Check the valve opening temperature of the water inlet with thermostat sub-assembly.

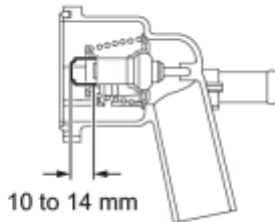
Valve opening temperature:

80 to 84°C (176 to 183°F)

HINT:

If the valve opening temperature is not as specified, replace the water inlet with thermostat sub-assembly.

(c) Check the valve lift.



T

Valve lift:

10 to 14 mm (0.394 to 0.551 in.) at 95°C (203°F)

HINT:

If the valve lift is not as specified, replace the water inlet with thermostat sub-assembly.

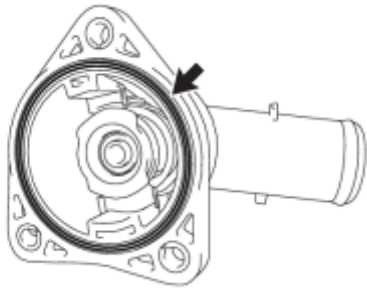
(d) Check that the valve is fully closed when the water inlet with thermostat sub-assembly is at low temperatures (below 77°C (171°F)).

HINT:

If it is not fully closed, replace the water inlet with thermostat sub-assembly.

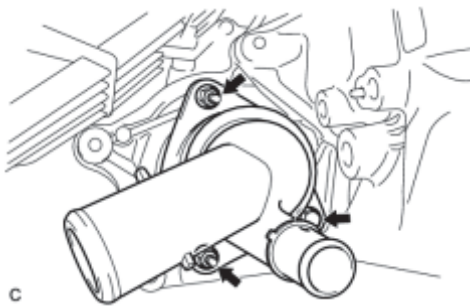
# INSTALLATION

## 1. INSTALL WATER INLET WITH THERMOSTAT SUB-ASSEMBLY



(a) Install a new gasket on the water inlet with thermostat sub-assembly.

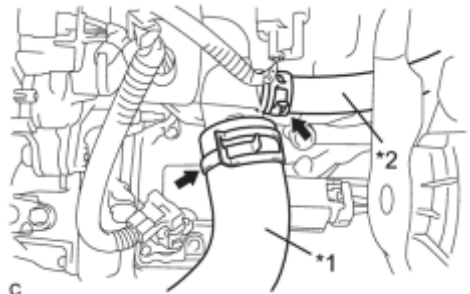
T



(b) Install the water inlet with thermostat sub-assembly with the 2 nuts and bolt.

Torque: **10 N·m (102 kgf·cm, 7ft·lbf)**

c



(c) Connect the No. 2 radiator hose and No. 3 water by-pass hose.

### Text in Illustration

*1	No. 2 Radiator Hose
*2	No. 3 Water By-pass Hose

2. ADD ENGINE COOLANT (for Engine) [INFO](#)

3. INSPECT FOR COOLANT LEAK (for Engine) [INFO](#)

4. INSTALL ENGINE OIL LEVEL DIPSTICK GUIDE SUB-ASSEMBLY [INFO](#)

5. INSTALL INLET AIR CLEANER ASSEMBLY [INFO](#)

6. INSTALL NO. 1 ENGINE UNDER COVER