

# WASHER NOZZLE

## ADJUSTMENT

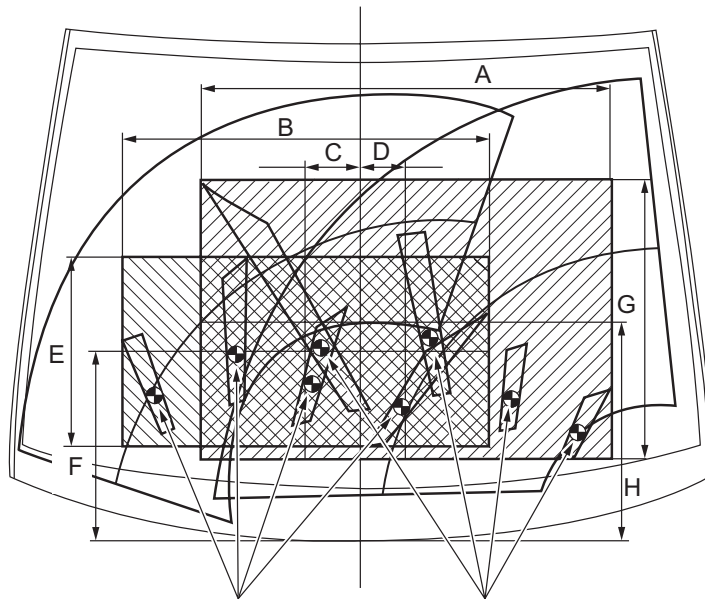
### 1. INSPECT WASHER NOZZLE

- (a) With the power switch ON (IG), check the position that the washer fluid hits the windshield.

**Standard:**

**Washer fluid hits the windshield in the areas indicated in the illustration.**

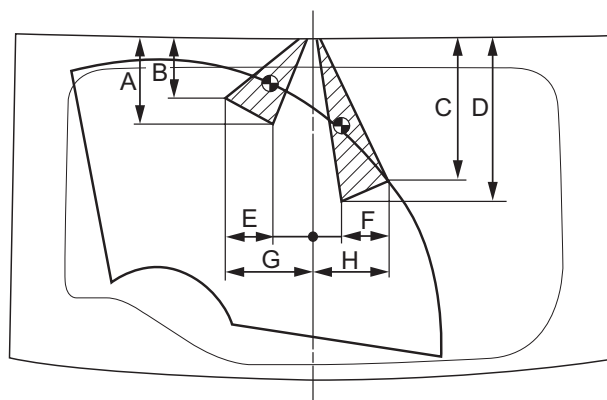
for Front



- |                       |                       |
|-----------------------|-----------------------|
| A: 820 mm (32.28 in.) | E: 380 mm (14.96 in.) |
| B: 735 mm (28.94 in.) | F: 375 mm (14.76 in.) |
| C: 112 mm (4.41 in.)  | G: 555 mm (21.85 in.) |
| D: 90 mm (3.54 in.)   | H: 435 mm (17.13 in.) |



for Rear



- |                       |                        |
|-----------------------|------------------------|
| A: 157 mm (6.18 in.)  | E: 76 mm (2.99 in.)    |
| B: 110 mm (4.33 in.)  | F: 52 mm (2.05 in.)    |
| C: 261 mm (10.28 in.) | G: 163.6 mm (6.44 in.) |
| D: 301 mm (11.85 in.) | H: 143.6 mm (5.65 in.) |



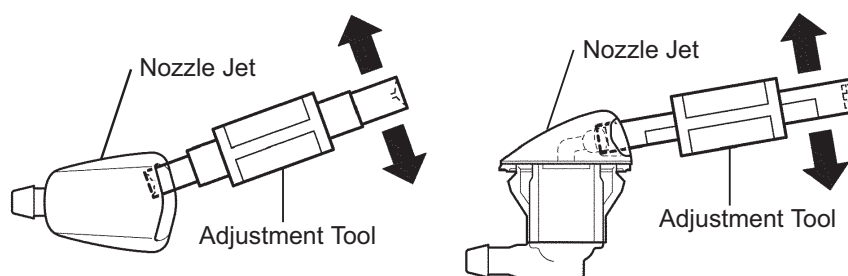
B139880E02

## 2. ADJUST WASHER NOZZLE

- (a) Using a TOYOTA 4 Way Nozzle Adjustment Tool, insert the bumpy part of the adjustment tool into the bumpy part of the nozzle jet and make the adjustment.

### NOTICE:

- Clarify if the 4 mm or 5 mm diameter washer nozzle is being adjusted.
- Do not use a tool such as metal pin as it may damage the nozzle jet.



P

I040986E01