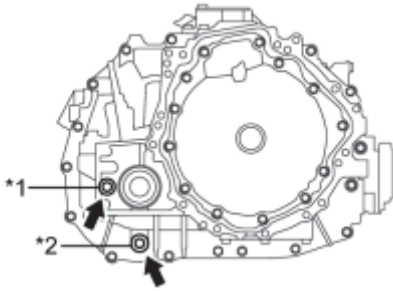


REPLACEMENT

1. DRAIN HYBRID TRANSAXLE FLUID

(a) Using a 10 mm hexagon socket wrench, remove the filler plug and gasket.



Text in Illustration

*1	Filler Plug
*2	Drain Plug

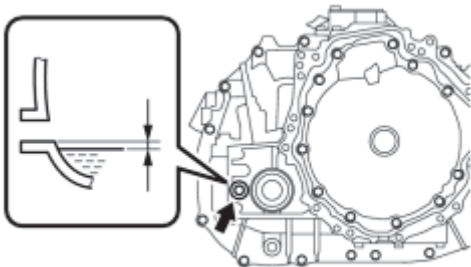
(b) Using a 10 mm hexagon socket wrench, remove the drain plug and gasket.

(c) Using a 10 mm hexagon socket wrench, install the drain plug, and a new gasket.

Torque: **39 N·m (398 kgf·cm, 29ft·lbf)**

2. ADD HYBRID TRANSAXLE FLUID

(a) Add transaxle fluid until the fluid level is between 0 to 10 mm (0 to 0.394 in.) from the bottom lip of the filler plug opening.



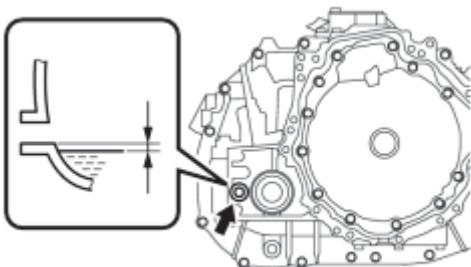
- Stop the vehicle on a flat road.
- Recheck the transaxle fluid level after driving when exchanging fluid.
- Insufficient or excessive amounts of transaxle fluid may be the cause of some trouble.

Reference:

3.3 liters (3.5 US qts, 2.9 Imp.qts)

3. INSPECT HYBRID TRANSAXLE FLUID

(a) Check that the fluid level is between 0 to 10 mm (0 to 0.394 in.) from the lowest position of the inner surface of the transaxle filler plug opening.



- Stop the vehicle on a flat road.
- Recheck the transaxle fluid level after driving when exchanging fluid.
- Insufficient or excessive amounts of transaxle fluid may be the cause of some trouble.

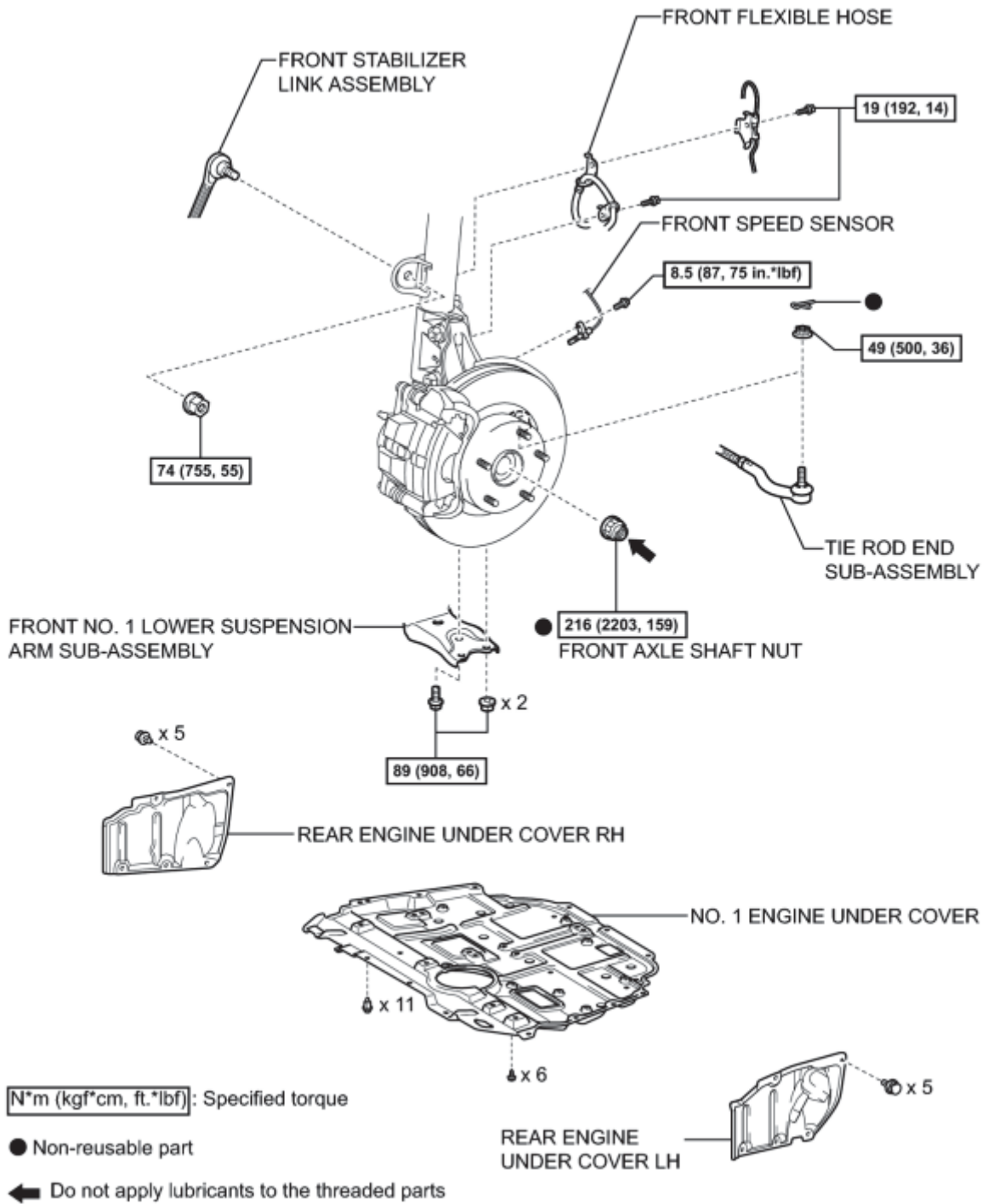
(b) Check for leaks if the quantity of transaxle fluid is low.

(c) Using a 10 mm hexagon socket wrench, install the filler plug with a new gasket.

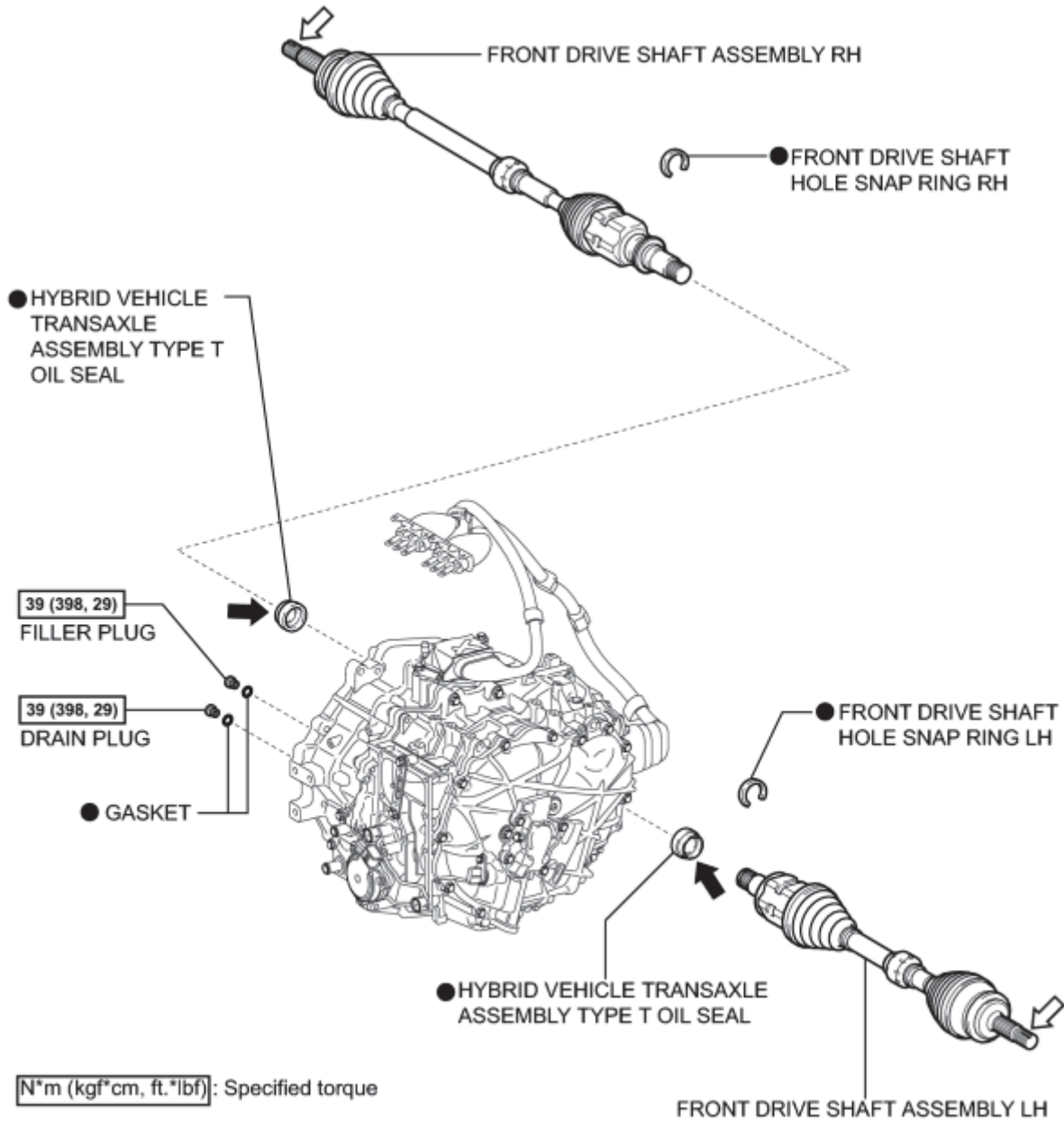
Torque: **39 N·m (398 kgf·cm, 29ft·lbf)**

COMPONENTS

ILLUSTRATION



ILLUSTRATION



c

REPLACEMENT

HINT:

- Use the same procedure for the RH side and LH side.
- The procedure listed below is for the LH side.

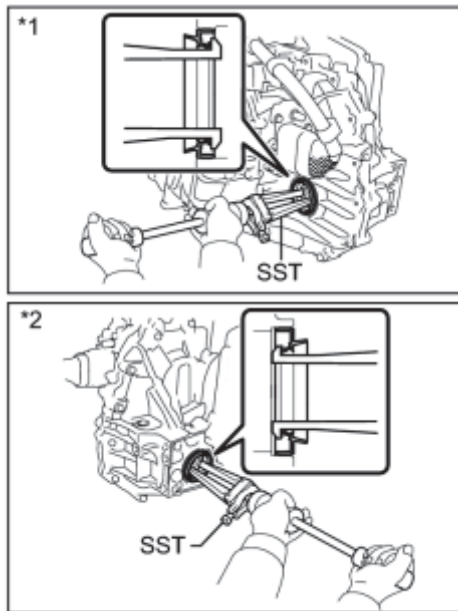
1. REMOVE FRONT WHEEL
2. REMOVE NO. 1 ENGINE UNDER COVER
3. REMOVE REAR ENGINE UNDER COVER LH
4. REMOVE REAR ENGINE UNDER COVER RH
5. DRAIN HYBRID TRANSAXLE FLUID_ INFO
6. REMOVE FRONT AXLE SHAFT NUT_ INFO
7. SEPARATE FRONT SPEED SENSOR_ INFO
8. SEPARATE FRONT FLEXIBLE HOSE_ INFO
9. SEPARATE TIE ROD END SUB-ASSEMBLY_ INFO
10. SEPARATE FRONT STABILIZER LINK ASSEMBLY_ INFO
11. SEPARATE FRONT NO. 1 LOWER SUSPENSION ARM SUB-ASSEMBLY_ INFO
12. SEPARATE FRONT DRIVE SHAFT ASSEMBLY_ INFO
13. REMOVE FRONT DRIVE SHAFT ASSEMBLY_ INFO
14. REMOVE FRONT DRIVE SHAFT HOLE SNAP RING_ INFO
15. REMOVE HYBRID VEHICLE TRANSAXLE ASSEMBLY TYPE T OIL SEAL

(a) Using SST, tap out the 2 oil seals.

SST: 09308-00010

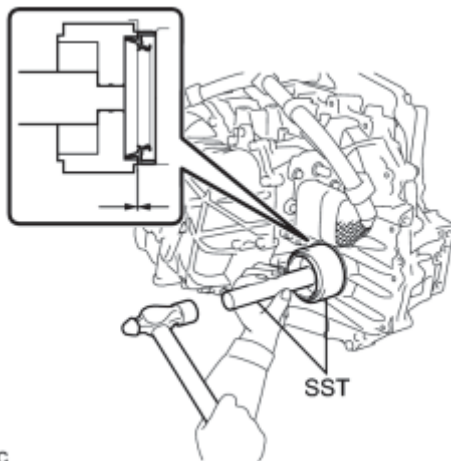
Text in Illustration

*1	LH Side
*2	RH Side



16. INSTALL HYBRID VEHICLE TRANSAXLE ASSEMBLY TYPE T OIL SEAL

(a) Install a new oil seal LH side.



(1) Using SST and a hammer, tap in a new oil seal.

SST: 09316-10010

SST: 09950-70010

09951-07150

Oil seal driven in depth:

-0.5 to 0.5 mm (-0.0197 to 0.0197 in.)

c

(2) Coat the lip of the oil seal with MP grease.

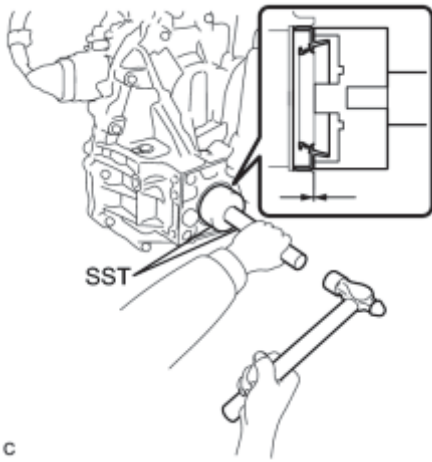
(b) Install a new oil seal RH side.

(1) Using SST and a hammer, tap in a new oil seal.

SST: 09726-36010

SST: 09950-70010

09951-07150



Oil seal driven in depth:

-0.5 to 0.5 mm (-0.0197 to 0.0197 in.)

(2) Coat the lip of the oil seal with MP grease.

17. INSTALL FRONT DRIVE SHAFT HOLE SNAP RING INFO

18. INSTALL FRONT DRIVE SHAFT ASSEMBLY INFO

19. CONNECT FRONT NO. 1 LOWER SUSPENSION ARM SUB-ASSEMBLY INFO

20. CONNECT FRONT STABILIZER LINK ASSEMBLY INFO

21. CONNECT TIE ROD END SUB-ASSEMBLY INFO

22. INSTALL FRONT FLEXIBLE HOSE INFO

23. CONNECT FRONT SPEED SENSOR INFO

24. INSTALL FRONT AXLE SHAFT NUT INFO

25. ADD HYBRID TRANSAXLE FLUID INFO

26. INSPECT HYBRID TRANSAXLE FLUID INFO

27. INSTALL FRONT WHEEL INFO

28. INSPECT AND ADJUST FRONT WHEEL ALIGNMENT

HINT: INFO

29. INSTALL REAR ENGINE UNDER COVER LH

30. INSTALL REAR ENGINE UNDER COVER RH

31. INSTALL NO. 1 ENGINE UNDER COVER

32. INSPECT SPEED SENSOR SIGNAL

HINT: 