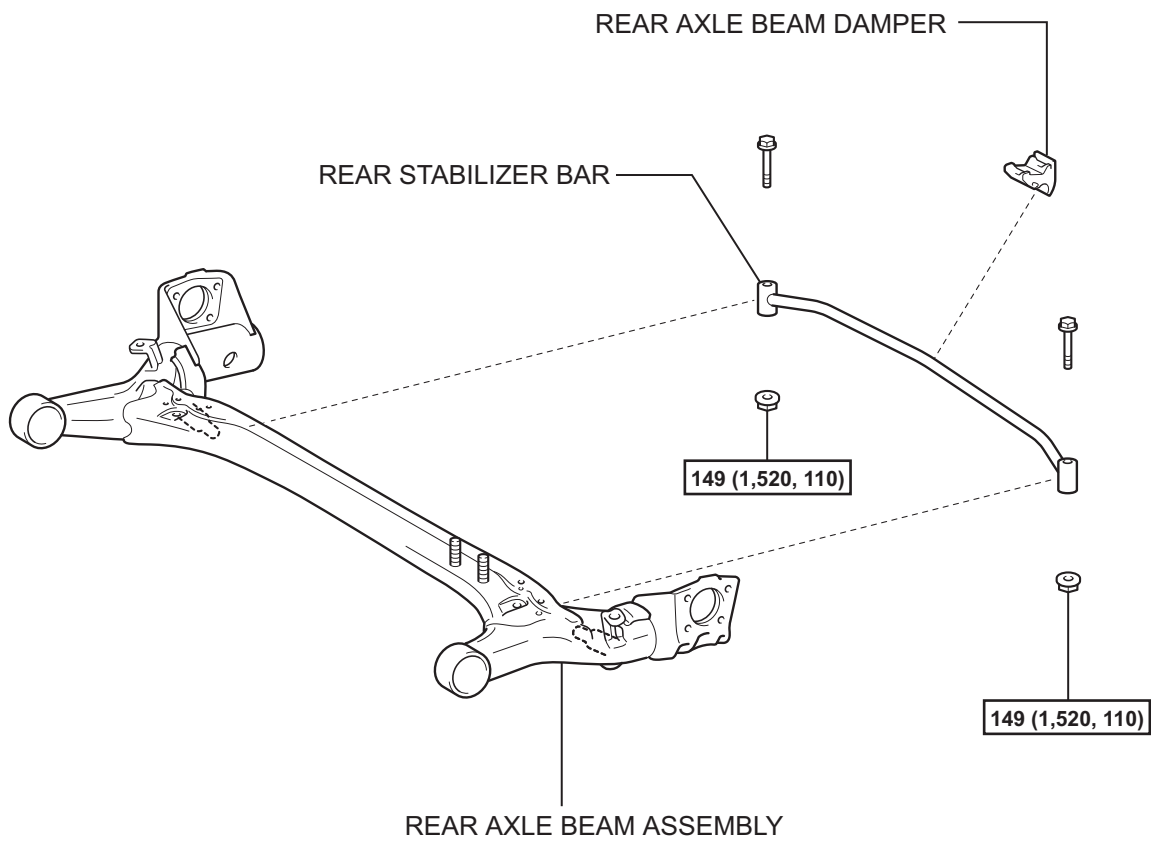


REAR STABILIZER BAR

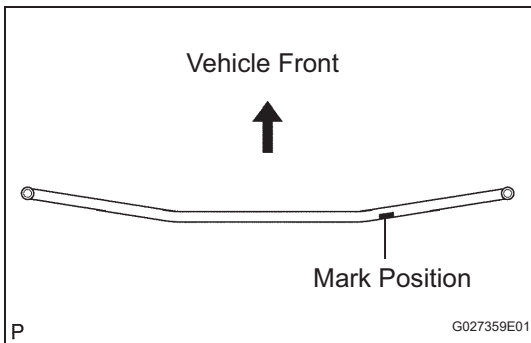
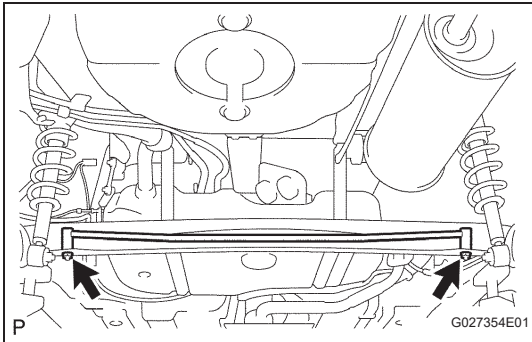
COMPONENTS



N*m (kgf*cm, ft.*lbf) : Specified torque

REMOVAL

1. **REMOVE REAR AXLE BEAM DAMPER**
 - (a) Remove the rear axle beam damper from the rear axle beam.
2. **REMOVE REAR STABILIZER BAR**
 - (a) Remove the 2 bolts, 2 nuts and stabilizer bar.



INSTALLATION

1. **INSTALL REAR STABILIZER BAR**
 - (a) Install the stabilizer bar so that the mark position faces towards the vehicle's rear right. Hold the bolts and tighten the nuts.
Torque: 149 N*m (1,520 kgf*cm, 110 ft.*lbf)
2. **INSTALL REAR AXLE BEAM DAMPER**
 - (a) Install the rear axle beam damper to the center of the rear axle beam.

