

Calibration Update Check

Press the ECU Reprogramming button on the System Select display.

The Calibration Update Check screen displays whether or not there is a **Calibration ID** and update for vehicles with ECU's designed for Reprogramming. If there is an update, a link to TIS is displayed. TIS can be displayed by clicking the link.

file:///C:/Users/George/AppData/Local/Temp/~hh60D2.htm

8/14/2016

Utility

Page 21 of 24

1	2	3	4
	System	Calibration ID	Calibration Update
<input type="checkbox"/>	Engine and ECT	33365100	Yes
<input type="checkbox"/>		63330000	Yes
<input type="checkbox"/>		33366100	Yes
<input checked="" type="checkbox"/>	Hybrid Control	63330000	Yes
		XVZVJ201	Yes
		XVZVJ202	Yes
		XVZVJ203	Yes
		XVZVJ204	Yes
		XVZVJ206	Yes
		XVZVJ206	Yes
<input checked="" type="checkbox"/>	Smart Access / Smart Key / Wireless Tuner	-	-
<input checked="" type="checkbox"/>	EVAP	-	-

6 Cal Check All
20091009 19:22:56 7

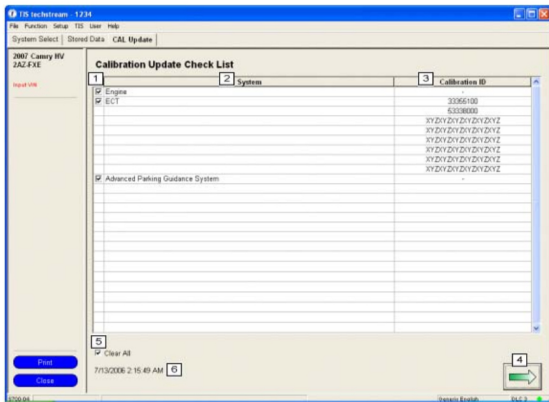
5

Diagnosis Screen (Calibration Update Check List)

- 1** Select Check Box
Allows the target for the Calibration Check to be selected from among the displayed ECU's. When the Cal Check button is pressed, the calibration check will be performed on only the checked ECU.
- 2** System
Displays a list of ECU's under diagnosis that are designed for reprogramming and installed on the vehicle.
- 3** Calibration ID
Displays the **Calibration ID** for each installed ECU. ECU's consist of a number of CPU's. ECU's are displayed in multiple rows. "N/A" is displayed for ECU's for which a **Calibration ID** cannot be acquired.
- 4** Calibration Update [TIS Function]
Displays whether or not reprogramming is necessary for the **Calibration ID** acquired from the vehicle (refer to above). The **Calibration ID** check is displayed as the results of the inquiry with TIS. If reprogramming is necessary, "Yes" will be displayed as a link to the Calibration download site. To perform reprogramming, click the link to start TIS. When the target Calibration File on the TIS site is clicked, the file will be downloaded and the Calibration Update Wizard will start.
If "N/A" is displayed for the **Calibration ID**, the Calibration Update function cannot be used. The Calibration Update column will not be displayed for Tech Streams that do not have TIS connection information.
- 5** Cal Check button
Acquires the **Calibration ID** for the ECU selected in the Calibration Update Check List from the vehicle. This **Calibration ID** is checked on TIS to verify whether or not updating is necessary.
- 6** Check All check box
Inserts or removes checks from all checkboxes on the Calibration Update Check List.
- 7** Date / Time
Displays the date and time the Cal Check was performed.

Note

The screen below is displayed for environments in which TIS cannot be used. The **Calibration ID**'s for vehicles with ECU's designed for reprogramming are displayed. The TIS link is not displayed.



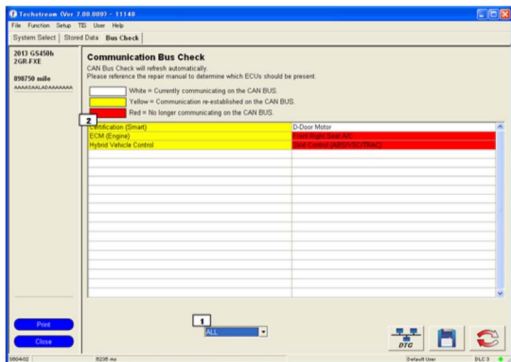
Diagnosis Screen (Calibration Update Check List)

- 1 Select Check Box
Allows the target for the Calibration Check to be selected from among the displayed ECU's. When the Cal Check button is pressed, the calibration check will be performed on only the checked ECU.
- 2 System
Displays a list of ECU's under diagnosis that are designed for reprogramming and installed in the vehicle.
- 3 Calibration ID
Displays the Calibration ID for each installed ECU. ECU's consist of a number of CPU's. ECU's are displayed in multiple rows. "Not Reprogrammable" is displayed for ECU's for which a Calibration ID cannot be acquired.
- 4 Cal Check button
Acquires the Calibration ID from the vehicle for the ECU selected in the Calibration Update Check List. This Calibration ID is checked on TIS to verify whether or not updating is necessary.
- 5 Check All check box
Inserts or removes checks from all checkboxes on the Calibration Update Check List.
- 6 Date / Time
Displays the date and time the Cal Check was performed.




CAN Bus Check

Press the CAN Bus Check button on the System Select display.

When performing a CAN Bus Check, it is possible to display a list of all ECU's connected to the CAN bus.

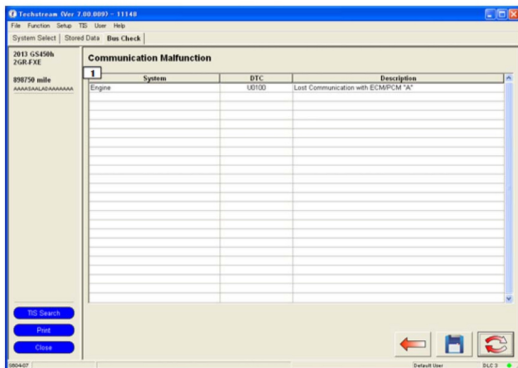


Diagnosis Screen (CAN Bus Check)

- 1 Combo Box / Dropdown List
Display "ALL", "V Bus" and confirmed G/W ECU' s in the Dropdown list.
 - 2 CAN Bus Check List
Displays All systems, systems connected to V Bus, or systems connected to G/W ECU according to the selected item in the Combo Box. Continuously communicates with ECUs and updates the list when the connection status changes. Change the background color according to the connection status changes that have happened.
 - Continuously detected without a problem: White
 - Lost connection once, but now detected: Yellow
 - Detected once, but not detected now: Red
 - Included in V Bus, but not detected at all:
-  Communication Malfunction Check button
Transition to Communication Malfunction Check screen.
-  Store button
Collects and stores CAN Bus Check results and Communication DTCs.
-  Refresh Button
When clicked, updates the results by communicating with the same ECUs as the previous time.

Communication Malfunction Check

When performing a Communication Malfunction Check, it is possible to display the communication malfunction DTCs from all system DTCs in the vehicle.



Diagnosis Screen (Communication Malfunction Check)

- 1 **Communication Malfunction List**
Displays communication malfunction DTCs and the corresponding system names. System without any DTC is not displayed.



Back button

Transition to the CAN Bus Check screen.



Store button

Collects and stores CAN Bus Check results and Communication DTCs.



Refresh Button

When clicked, update the results by doing the same communication as the initial one.