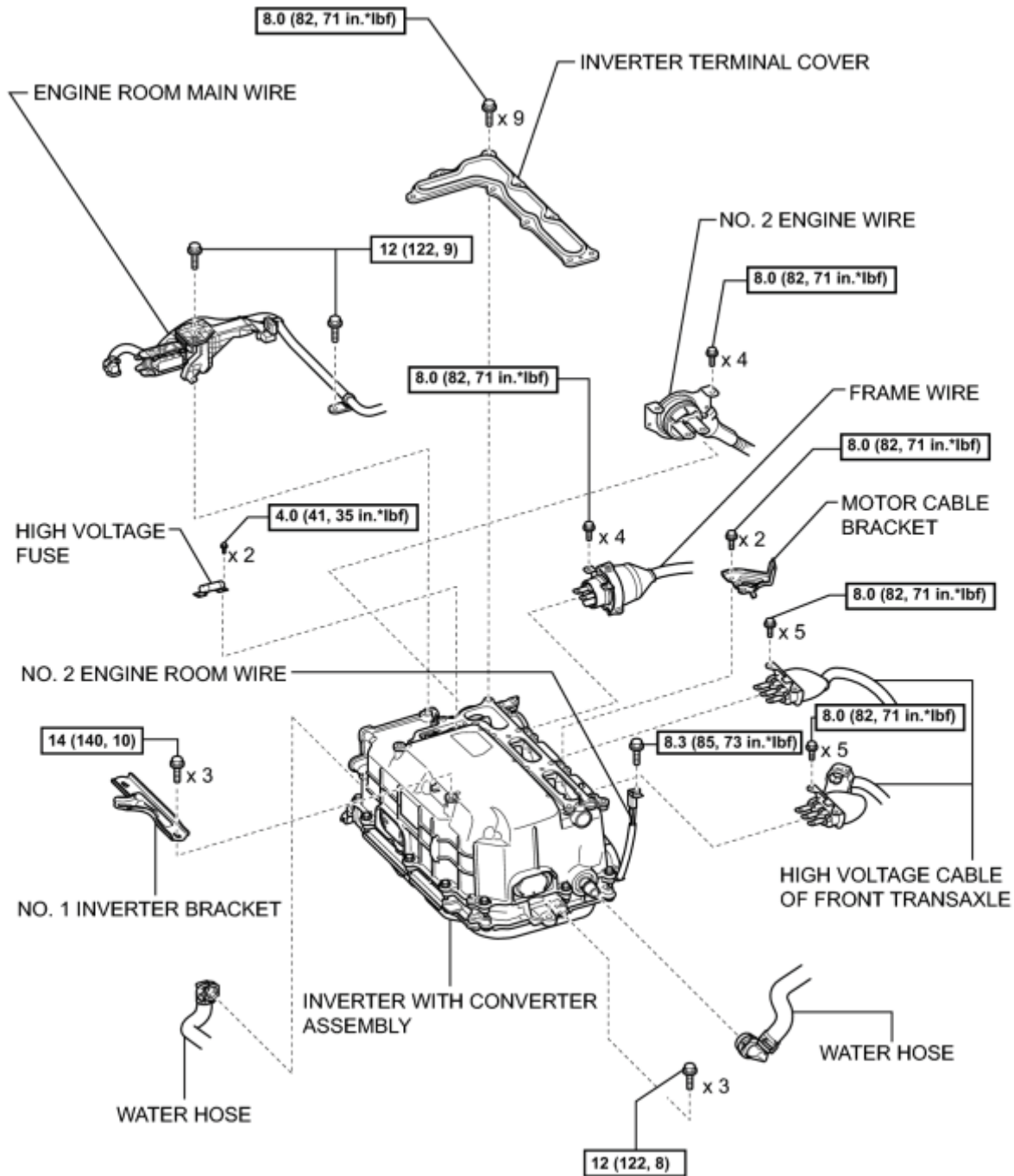


COMPONENTS

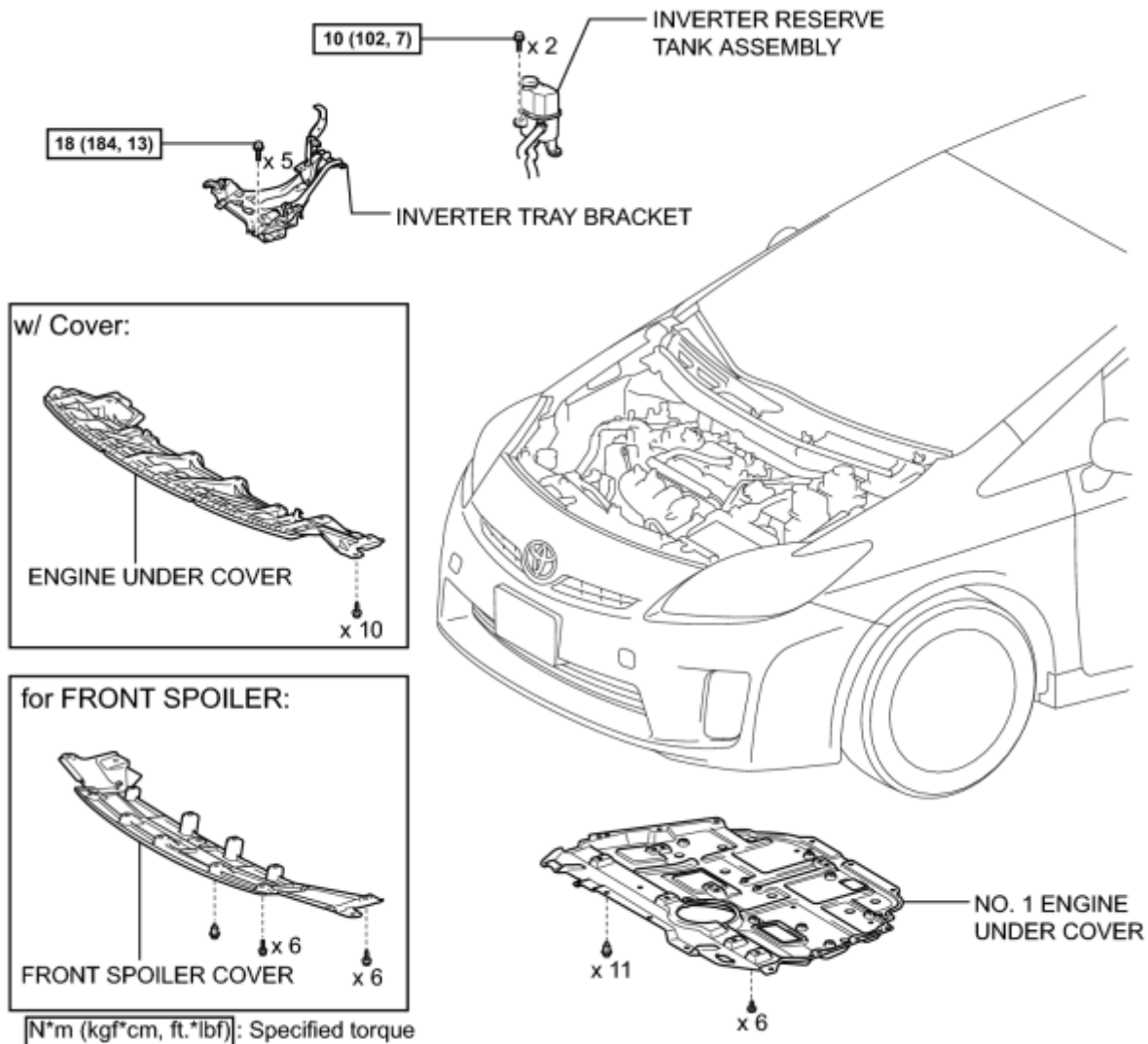
ILLUSTRATION



N*m (kgf*cm, ft.*lbf): Specified torque

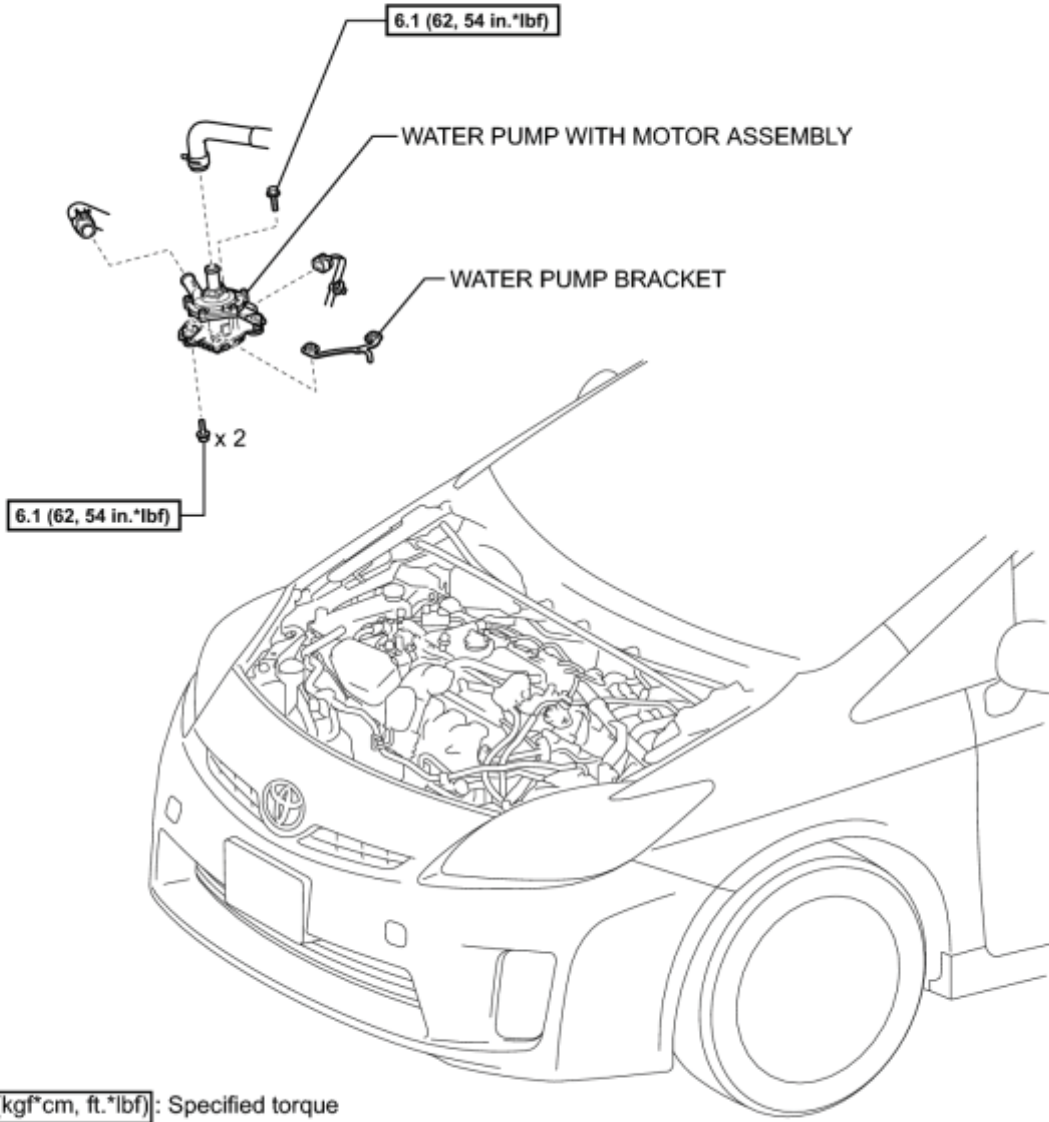
c

ILLUSTRATION



c

ILLUSTRATION



c

REMOVAL

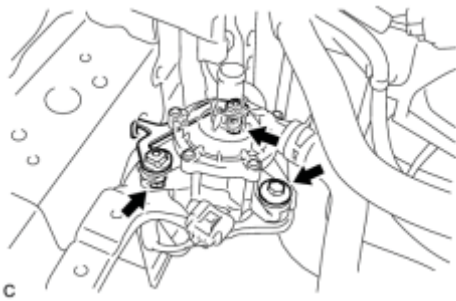
1. REMOVE FRONT SPOILER COVER (w/ Front Spoiler)
2. REMOVE ENGINE UNDER COVER (w/ Cover)
3. REMOVE NO. 1 ENGINE UNDER COVER
4. DRAIN COOLANT (for Inverter) INFO
5. REMOVE INVERTER WITH CONVERTER ASSEMBLY

HINT: INFO.

6. REMOVE INVERTER RESERVE TANK ASSEMBLY INFO
7. REMOVE INVERTER TRAY BRACKET INFO
8. REMOVE WATER PUMP WITH MOTOR ASSEMBLY



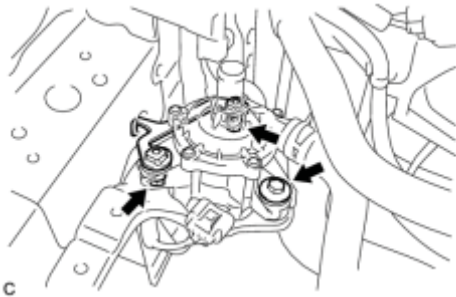
(a) Disconnect the water hose and connector.



(b) Remove the 3 bolts and the water pump with motor assembly with the water pump bracket.

INSTALLATION

1. INSTALL WATER PUMP WITH MOTOR ASSEMBLY



(a) Install the water pump with motor assembly and water pump bracket with the 3 bolts.

Torque: **6.1 N·m (62 kgf·cm, 54in·lbf)**



(b) Connect the water hose and connector.

2. INSTALL INVERTER TRAY BRACKET INFO

3. INSTALL INVERTER RESERVE TANK ASSEMBLY INFO

4. INSTALL INVERTER WITH CONVERTER ASSEMBLY

HINT: INFO.

5. ADD COOLANT (for Inverter) INFO

6. INSPECT FOR COOLANT LEAK (for Inverter) INFO

7. INSTALL NO. 1 ENGINE UNDER COVER

8. INSTALL FRONT SPOILER COVER (w/ Front Spoiler)

9. INSTALL ENGINE UNDER COVER (w/ Cover)