

For customers

Toyota genuine Luggage soft tray (for second-row seat back)

Instruction manual

Thank you for purchasing the Toyota Genuine Luggage Soft Tray (for the back of the second seat). Please be sure to read this instruction manual and follow the instructions before use.

Please use it correctly according to the instructions.

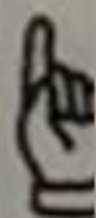
Please keep this manual in your car so that it does not get lost.

When you transfer this product to another customer, please be sure to hand over this booklet as well.

Installation precautions

In this instruction manual, the following marks are used to indicate things you should especially observe to ensure safe use.

▲ **Caution:** Failure to follow the precautions may result in an accident, injury, or damage to the vehicle.



Advice: Here we list things you should know to use the product more safely and comfortably.

Product number

low deck

08241-47240

high deck

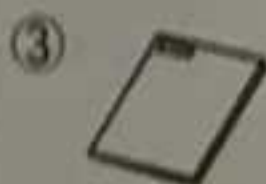
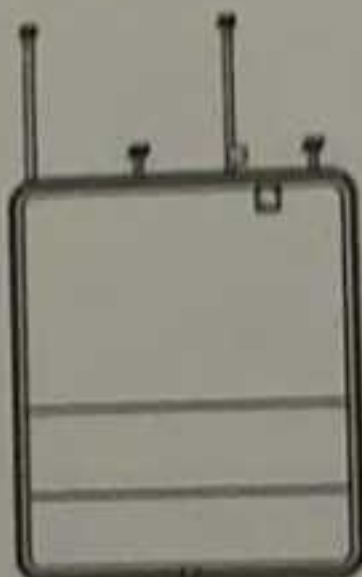
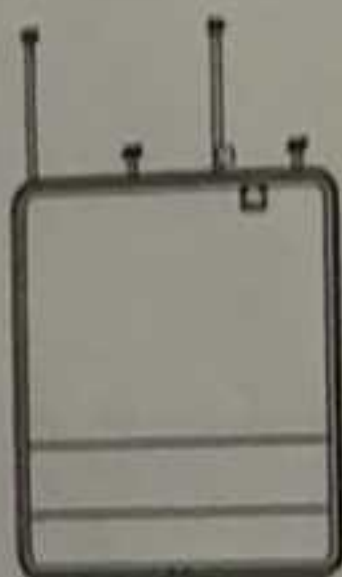
08241-47250

component parts

① a [Low deck] [High Deck]



② b [Low deck] [High Deck]



No.	Product name	
①	Luggage Soft Tray (for second-row seat pack)	a 1
②	Luggage soft tray (for second-row seat back)	b 1
③	Instruction manual	1

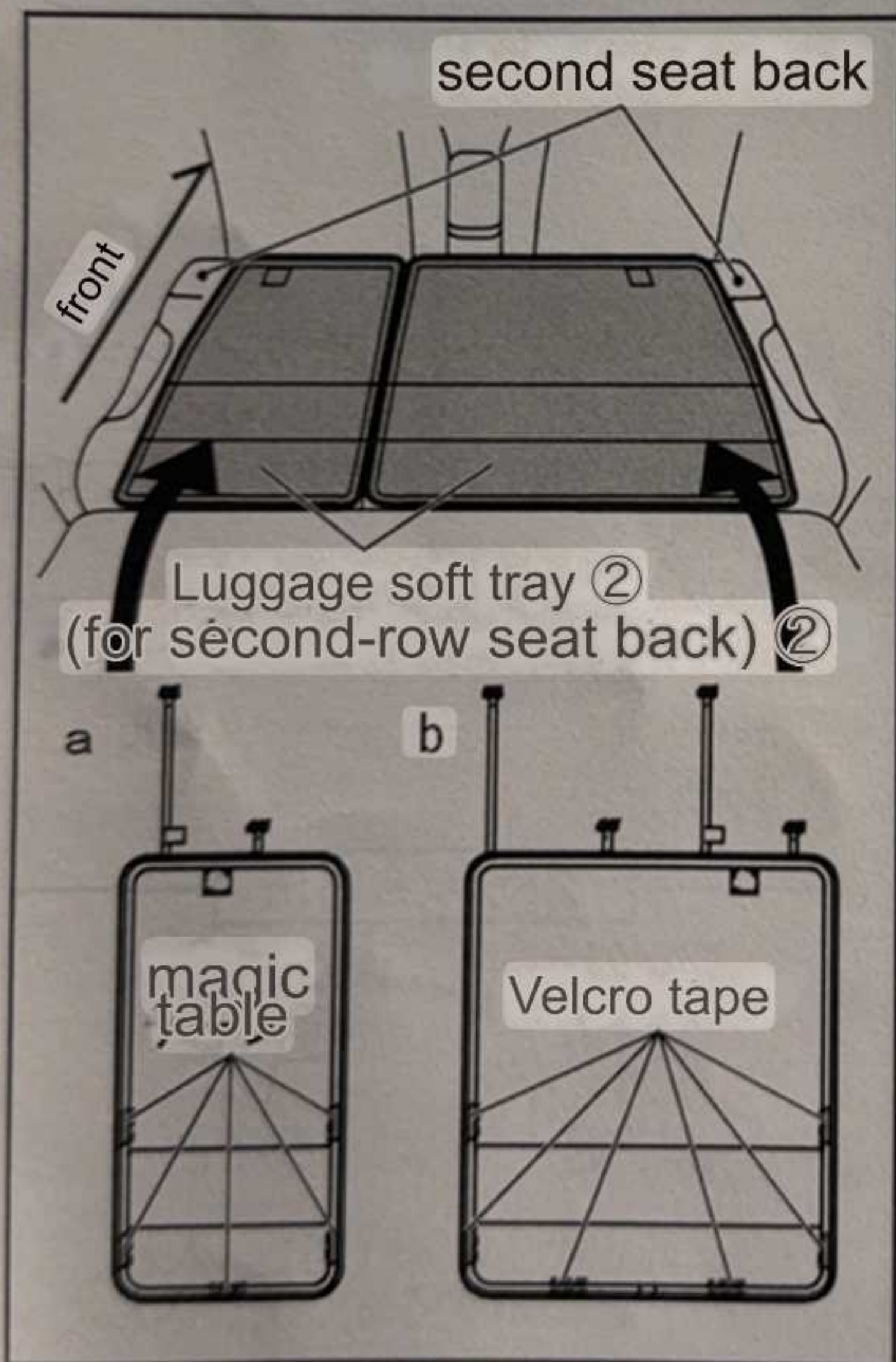
Product features

- A fabric-type luggage tray that covers the back of the second seat back.
- The tray is made of a non-slip, water-repellent, and waterproof material, and has a rim to prevent small debris from spilling.
- *Although the material is highly waterproof, due to its structure it is not completely waterproof.
- Soft design that makes it easy to put on and take off.

Installation overview



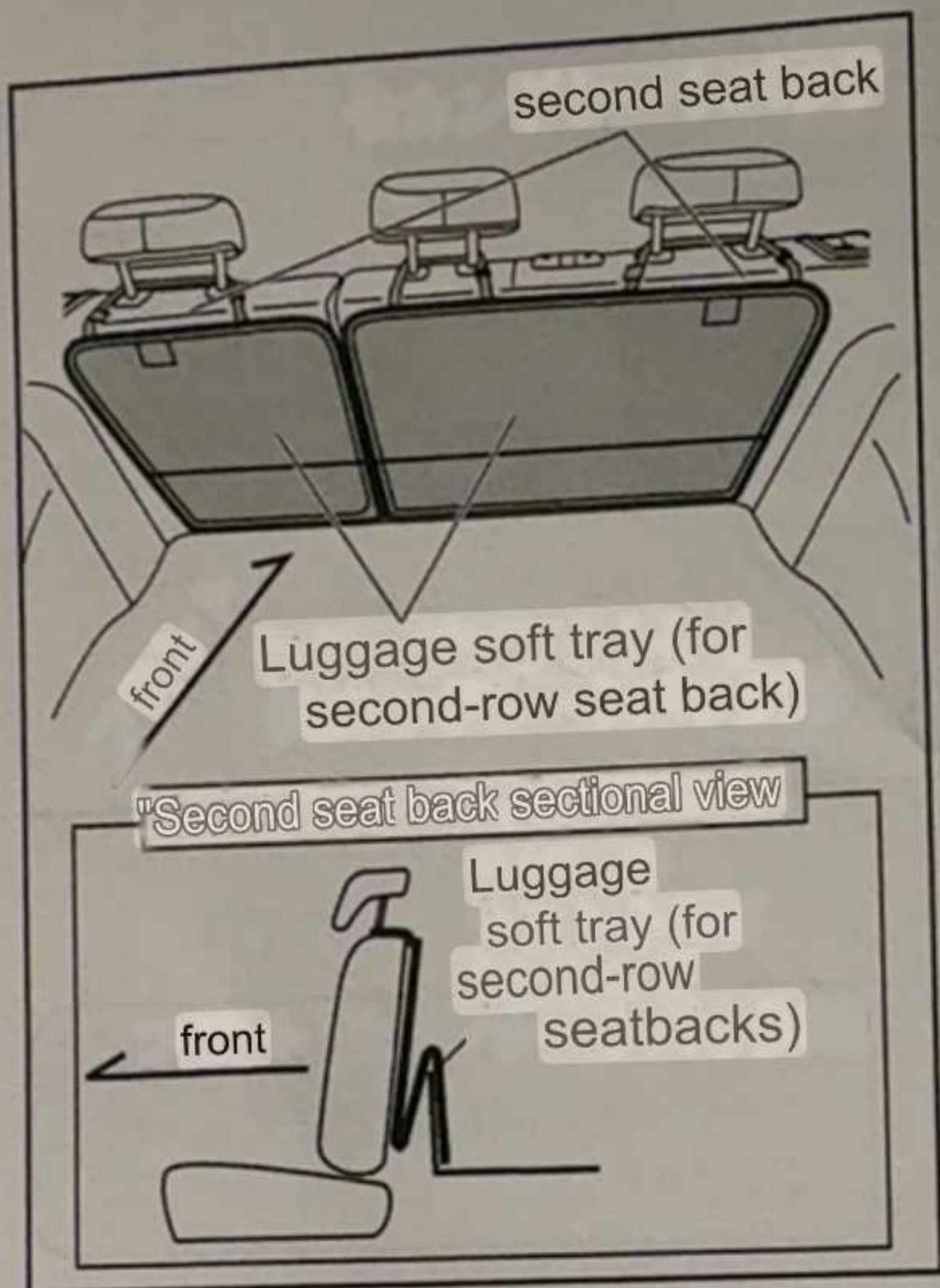
Installation instructions



• The diagram on the left explains the low deck, but the high deck can be installed in the same way.

① Fold down the left and right second seat backs.

② Place the Luggage Soft Tray (for Second Seat Back) a on the left side and Luggage Soft Tray (for Second Seat Back) b on the right side, with the Velcro side facing down, according to the shape of the back of the second seat back (see the diagram on the left).



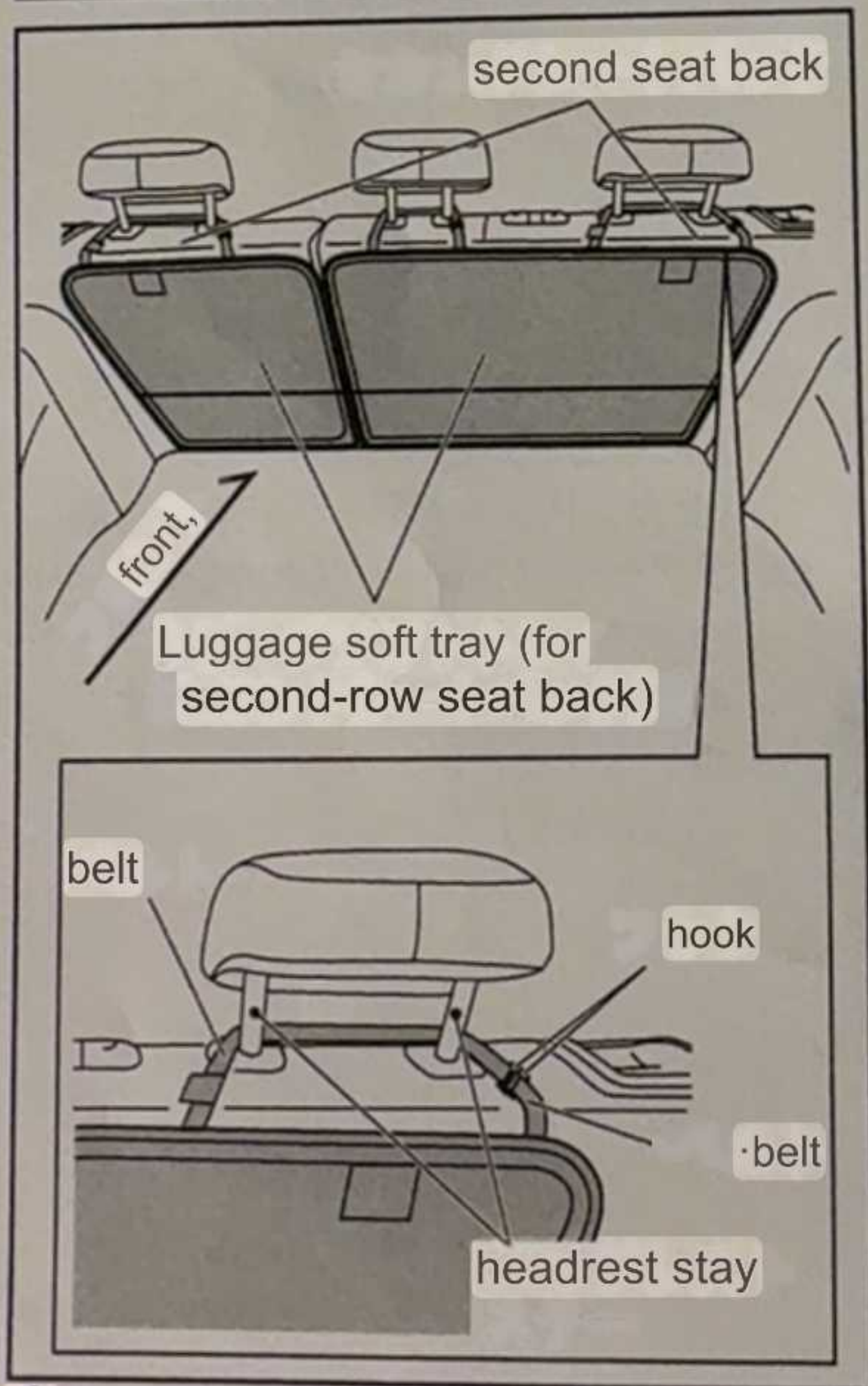
③ Raise the left and right second seat backs.

▲ Caution -1

- When raising the back of the second-row seat, make sure that the seat is locked.

When raising the second-row seat back, fold the luggage soft tray (for the second-row seat back) as shown in the cross-section diagram on the left.

- If the luggage soft tray (for the second seat back) is sagging, adjust it to fit the shape of the second seat back.

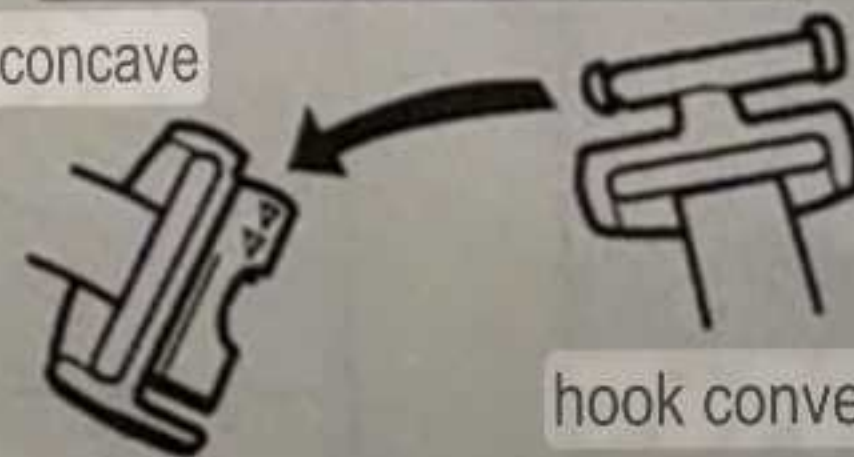


④ Hang the belt of the luggage soft tray (for the second seat back) on the headrest stay and engage the hook.

(Luggage soft tray (for second seat back) a: 1 location, Luggage soft tray (for second seat back) b: 2 locations)

Hook mating method

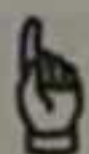
hook concave



hook convex

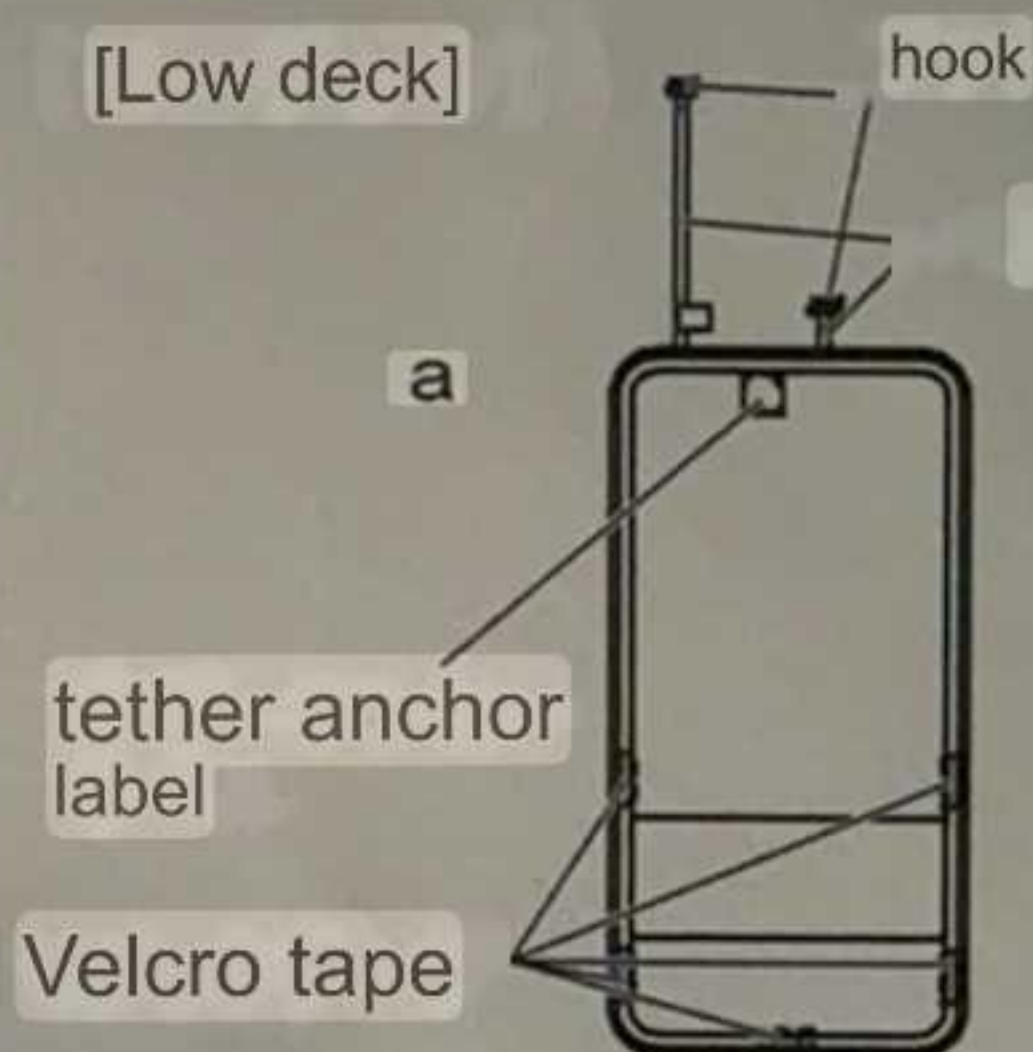
- Insert the hook (convex) into the hook (concave) and push it in until you hear a click.

Handling precautions

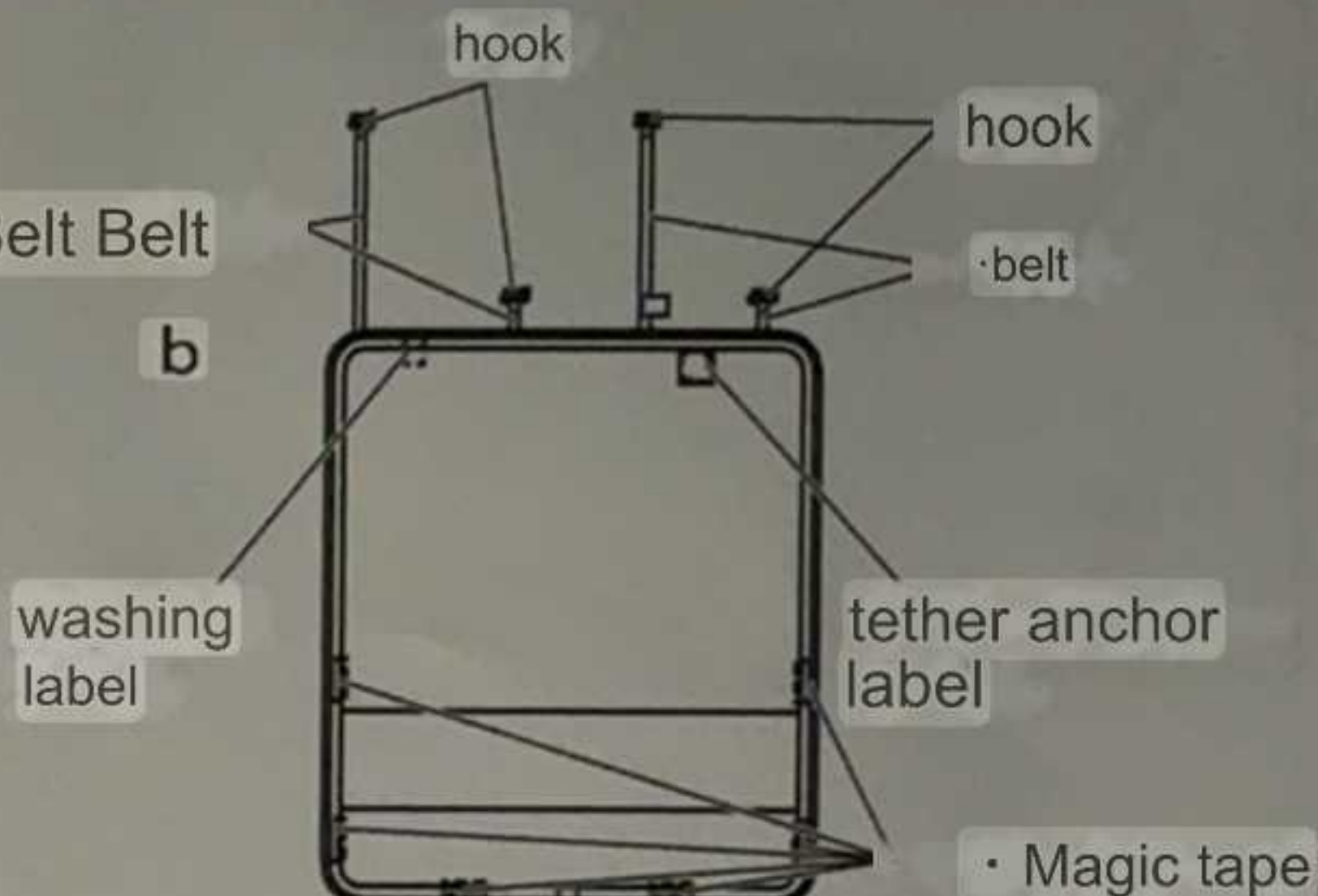


advice

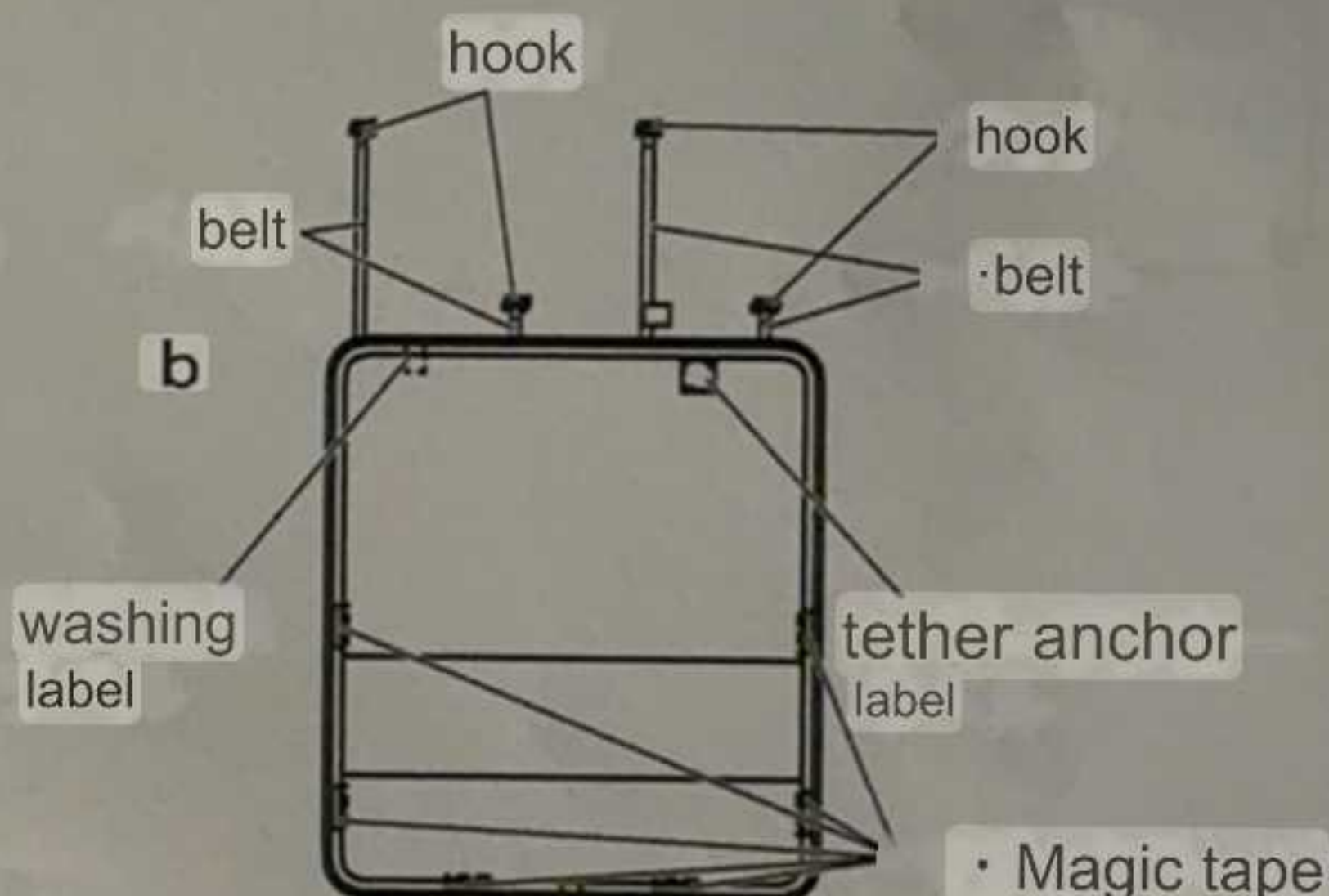
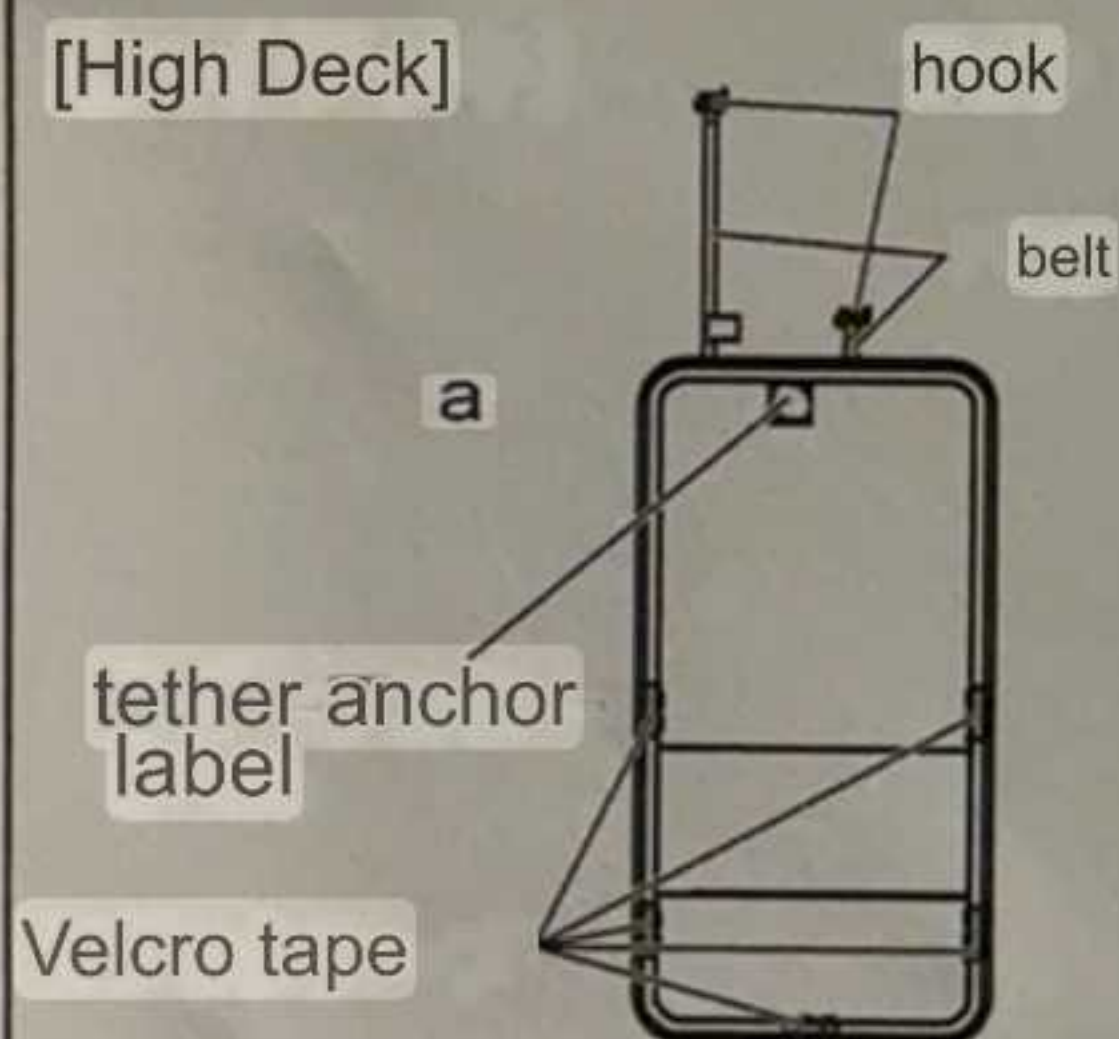
[Low deck]



• Belt Belt



[High Deck]



When using a child car seat, fold up the luggage soft trays (for the second-row seat backs) a and b and securely fasten them to the tether anchors on the back of the seat.

• When washing, please follow the washing instructions on the label sewn onto the back of the Luggage Soft Tray (for second seat back) b.

- When washing, please cover the Velcro part with a cloth or similar.

• The water-repellent properties may decrease after 5 to 6 washes. If this occurs, place a pressing cloth over the garment and iron it on high. Ironing will restore the water-repellent properties.

• If wet luggage is placed on the luggage soft tray (for the second seat back) a, b, the checkered pattern of the anti-slip surface may turn white. However, this will return to its original color once the tray has dried sufficiently, and this does not pose a problem with the product.

• The hooks on the main belt are designed to come off if excessive force is applied (for example, if the seat is forced down). In this case, please follow the hook reattachment method (page 4) to restore the original position.